

200 WATT CAR RADIOS

- AM/FM Tuner • Playback formats: MP3, WMA, WAV • MP3/WMA comfort browsing • USB • Front USB (Standard A-type) • Front Aux-in • Built-in bluetooth for hands-free calling and audio streaming • Built-in microphone • sound presets (rock, pop, classic) • Detachable panel • USB for charging (1.5A)



ASPEN 140

- 2-channel preamp-out
- 4 x 50 watt max power



DAYTONA 140

- 5-channel preamp-out
- 4 x 50 watt max power



NASHVILLE 140

- 2-channel preamp-out
- 4 x 50 watt max power



BREMEN SQR46 DAB

- High-End CODEM IV High-End World-Tuner • FM (RDS), AM Tuner • DAB+ Tuner built-in • USB, SD, SDHC (up to 32 GB) • Audio from USB/SDHC • Audio formats MP3, WMA
- Bluetooth module built-in (HFP, PBAP, A2DP, SPP, AVRCP) • Twin-Connect • Phone book access • Built-in + external microphone • Navigation audio mix • 1x front USB • 1x rear USB • 1x front Aux-In • 1x front SDHC slot • Steering wheel control input (programmable) • 3-band, semi-parametric equalizer • Sound presets (Rock, Pop, Classic) • X-Bass
- 4-channel preamp-out (4V) • Separate Sub-Out • 4 x 50-Watt max. power • Vario Colour (RGB for display & button illumination) • Fix front panel • Permanent memory • Short mounting depth • IR remote control included in delivery • DAB+ onglas antenna included in delivery • External BT- microphone included in delivery



FRANKFURT RCM82 DAB

- High-End CODEM IV World-tuner • FM, AM, DAB, DAB+ Tuner with radiotext/DLS • Traffic function • Travelstore • Service following • Introsan Presets and Band • USB (2x), microSD with MP2, MP3, WMA, FLAC, • M4A (AAC), APE, WAV Support • Analog audio input on the front (AUX-IN) • Apple iPod Support • Telephony via int. or ext. microphone
- Audiostreaming with trackinfo • Audio mix-option for mobile navigation • Voice assistant support (e.g. Siri, Google, Alexa) • Automatically switch on when there is an incoming call (Wake-upon call) • Two phones can be connected at the same time (Twin-Connect) • Phonebook access • Digital signal processing (DSP) • 2x 14-band equalizer (front and rear channels separately adjustable) • Sound presets • Loudness • 4-channel pre-amp out + subwoofer preamp output • 4 x 50 Watt • Adjustable illumination color of buttons and display (Vario Colour, 4,096 colors) • 2-line display • Brightness control of display and keys (DIM function) • Direct access to all audio sources • Permanent memory • Short body (low installation depth) • IR-remote control option, RC-10 compatible • Steering wheel remote control support (analog SWC input)

80 WATT CAR RADIO



CURITIBA

- AM/FM Tuner • Playback formats: MP3, WMA, WAV, FLAC • MP3/WMA comfort browsing • USB • Front USB (standard A-type) • Front Aux-in • Built-in bluetooth for hands-free calling and audio streaming • Built-in microphone • 2-channel Preamp-out
- 4 x 20 watt max power • Sound presets (rock, pop, clasic) • Fixed Panel

MULTIMEDIA DISPLAYS



MONTE CARLO 750

- High-end tuner • FM (RDS), AM Tuner • Large 6.75" digital TFT Capacitive touch screen display (800 x 480 pixels) • Apple CarPlay and Android Auto compatible • 2x USB (Standard A-type) • Audio and Video from USB • Enjoy connectivity with smartphone free of cables • Built-in Bluetooth for hands-free calling, phone book upload and audio streaming, • A/V input • Rear view camera input • Steering Wheel Control input
- 10-band parametric equalizer • Seamless integration with different car clusters



MEDELLIN 900

- High-end tuner • FM, AM Tuner • Large 9" digital TFT Capacitive touch screen display (1024 x 600 pixels) • Prepared for Navigation (GPS built-in) • 2x (Rear) USB (Standard A-type)
- Audio and Video from USB • Built-in Bluetooth for hands-free calling, phone book upload and audio streaming, • A/V input • Rear view camera input • Video output • Steering Wheel Control input • 10-band parametric equalizer • Wi-Fi built-in • Allows Android apps to be installed



NEW PORT BEACH 370

- FM Tuner • Large 7" digital TFT touch screen display (800 x 480 pixels) • Front USB (Standard A-type) • microSDHC • Audio and Video from USB/microSDHC • Built-in Bluetooth for hands-free calling, phone book upload and audio streaming • Built-in microphone • AV-Input
- Rear view camera input • Steering Wheel Control input • 3-band graphic equalizer • 4 x 40 Watt Max. power



JC7DM -Dash Mount 7" Touchscreen Monitor

- Bluetooth • Works with Apple CarPlay™ with wired and wireless connection • Supports Android Auto™ with wired and wireless connection • USB input (2.1A fast charging) • Front panel 3.5mm AUX output • FM radio station broadcasting capabilities • 7" Touchscreen • Suction cup for mounting on a dashboard or windshield • Built-in speaker • 12V Power adapter



WIRELESS!

CAR723W -7" Wireless Mechless CPAA AV Receiver

- Bluetooth • Works with Apple CarPlay™ with wired and wireless connection • Works with Android Auto™ with wired and wireless connection • 2 Rear USB input (2.1A fast charging) • Front and rear camera input (RCA) • Rear RCA A/V input • Media playback: USB • File formats: FLAC/MP3 • 3 Pairs of 4V RCA preamp outputs (F/R/S) • RGB button illumination • 6 Selectable backgrounds • Digital media unit – will not play CDs/DVDs • 200 Watts (60 W x 4) • 7" Touchscreen • AM/FM tuner with 30 stations presets (18FM/12AM) • 10 Band graphic EQ • 7 EQ presets (User, Classic, Rock, Jazz, R&B, Pop, & HipHop) • Fits 2-DIN openings • Steering Wheel Control (SWC) Input (Compatible with most SWC Interfaces)



WIRELESS!

CAR813 -8" Wireless Mechless CPAA AV Receiver

- Bluetooth • Works with Apple CarPlay™ with wired and wireless connection • Works with Android Auto™ with wired and wireless connection • 2 Rear USB input (2.1A fast charging) • Front and rear camera input (RCA) • Rear RCA A/V input • Media playback: USB • File formats: FLAC/MP3 • 3 Pairs of 4V RCA preamp outputs (F/R/S) • Subwoofer gain and source level volume control • Built-in subwoofer crossover • RGB button illumination • 3 Selectable backgrounds • Digital media unit – will not play CDs/DVDs • 240 Watts (60 W x 4) MOSFET • 8" Touchscreen • AM/FM tuner with 30 stations presets (18FM/12AM) • 10 Band graphic EQ • 7 EQ presets (User, Classic, Rock, Jazz, R&B, Pop, & HipHop) • Fits 1-DIN and 2-DIN openings (2-DIN bracket included) • Steering Wheel Control (SWC) Input (Compatible with most SWC Interfaces)



WIRELESS!

CAR1013 -10.1" Wireless Mechless CPAA AV Receiver

- Bluetooth • Works with Apple CarPlay™ with wired and wireless connection • Works with Android Auto™ with wired and wireless connection • 2 Rear USB input (2.1A fast charging) • Front and rear camera input (RCA) • Rear RCA A/V input • Media playback: USB • File formats: FLAC/MP3 • 3 Pairs of 4V RCA preamp outputs (F/R/S) • Subwoofer gain and source level volume control • Built-in subwoofer crossover • RGB button illumination • 3 Selectable backgrounds • Digital media unit – will not play CDs/DVDs • 240 Watts (60 W x 4) MOSFET • 10.1" Touchscreen • AM/FM tuner with 30 stations presets (18FM/12AM) • 10 Band graphic EQ • 7 EQ presets (User, Classic, Rock, Jazz, R&B, Pop, & HipHop) • Fits 1-DIN and 2-DIN openings (2-DIN bracket included) • Steering Wheel Control (SWC) Input (Compatible with most SWC Interfaces)



CR271ML - 7" Mechless

7" Touchscreen LCD (1024x600), Built-in Bluetooth technology with hands-free calling, music streaming with ID3 tags and phonebook support internal + external mics, SiriusXM-Ready® (SiriusXM Connect Vehicle Tuner and Subscription sold separately), AM/FM tuner with 30 station presets (18FM / 12AM), Push-to-talk button to access smartphone voice assistant, J-Link Smart Remote app via Bluetooth Shallow mount design for easy installation, 200 Watts max power (50W x 4) MOSFET, Steering Wheel Control (SWC) Input



CDR7011 - 7" DVD/CD

7" Touchscreen LCD (800x480), Built-in Bluetooth technology with hands-free calling, music streaming with ID3 tags - external microphone, AM/FM tuner with 30 station presets (18FM / 12AM), Push-to-talk button to access smartphone voice assistant, 200 W, atts max power (50W x 4), Steering Wheel Control (SWC) Input



CDR6221 - 6.2" DVD/CD

6.2" Touchscreen LCD (800x480), Built-in Bluetooth technology with hands-free calling, AM/FM tuner with 30 station presets (18FM / 12AM), Push-to-talk button to access smartphone voice assistant, Front panel USB input with 1A charging and playback, Back-up camera input, Front panel 3.5mm aux input, Rear RCA video curves, 200 Watts max power (50W x 4), Steering Wheel Control (SWC) Input



CDX3119 - CD

Single Din, CD, 10 Character 1-line display, MP3, AM/FM, Front USB 1A charging, Bluetooth, Detachable Faceplate, 50Wx4, 2V Rear Preouts, 2 Band EQ, 7 Preset EQ, Remote Control



MPR2110 - MECHLESS

Single Din, Mechless, 7 Character 1-line display, MP3, AM/FM, Front USB 1A charging, Fixed Face, 50Wx4, 2V Front and Rear Preouts, 2 Band EQ, 4 Preset EQ, Remote Control



MPR2121 - MECHLESS

Built-in Bluetooth technology with hands-free calling, music streaming, internal mic, AM/FM Receiver with 30 Station presets (18FM/12AM), iPlug Smart Remote app via Bluetooth (Apple®/Android™), Push-to-talk button to access smartphone voice assistant, Front panel USB input with 1A charging, Front panel 3.5mm AUX input, 2 Pair of RCA preamp outputs (F + R), Media playback: MP3/FLAC, Digital media receiver, does not play CDs, 4 Preset EQ curves (Classic, Rock, Pop, Flat), 12 Character LCD, RGB Custom color illumination (over 32k combinations), Auto color-changing illumination (automatically rotates through all LED colors), RGB customization from iPlug smart app, 200 Watts max power (50W x 4), Dimmer for LCD and button brightness, Shallow mount design for easy install



JS69T

6" x 9" 3-Way Triaxial Design, Polypropylene Woofer Cones, Nitrile Butadiene Rubber Surrounds, 58mm Mylar Dome Midrange, 20mm Piezo Tweeter, Sensitivity: 89dB, Frequency Response: 70Hz-20kHz, Nominal Impedance: 4 Ohm, RMS Power: 75 Watts, Peak Power: 375 Watts



JS68T

5" x 7" - 6/8" multi-fit 3-Way Triaxial Design, Polypropylene Woofer Cones, Nitrile Butadiene Rubber Surrounds, 35mm PEI Midrange, 15mm Piezo Tweeter, Sensitivity: 87dB, Frequency Response: 70Hz-20kHz, Nominal Impedance: 4 Ohm, RMS Power: 50 Watts, Peak Power: 250 Watts



JS65T

6.5" 3-Way Triaxial Design, Polypropylene Woofer Cones, Nitrile Butadiene Rubber Surrounds, 35mm PEI Midrange, 15mm Piezo Tweeter, Sensitivity: 87dB, Frequency Response: 70Hz-20kHz, Nominal Impedance: 4 Ohm, RMS Power: 50 Watts, Peak Power: 250 Watts



JS265

6 1/2 inch 2-Way Design, Treated Paper Cone & Black Foam Surround, Injection-Molded Polypropylene Woofer Cone, 1 inch Black Mylar Dome Tweeter, Stamped Steel Frame, High Performance Coated Steel Stamped Basket, Sensitivity: 86dB, Frequency Response: 80Hz-20kHz, Nominal Impedance: 4 Ohms, RMS Power: 50 Watts, Peak Power: 100 Watts



BUCAM350

• Image Sensor: CMOS, OV 7955, Power: 12V DC, Negative Ground, Power Consumption: <1 Watt, Effective Pixels: 672H x 492V, Video Format: NTSC, Lux: <0.5, White Balance: Auto, Viewing Angle: 170 Degrees, IP Rating: IP67, Operating Temperature: -30C ~ +70C, Plate material: Stainless Steel SUS304, Camera Body: Plastic



BUCAM200J

Low profile surface-mount Design, Wide angle lens (170 Degree), Resolution: 640 x 480, Standard RCA Video connection, Low LUX (< 0.5) sensor for improved night viewing, IP Rating: IP67, Waterproof CMOS color rear-view camera, Parking guidelines (On/Off)



JA2B

Jensen DSP Amp app (Apple®/Android™) to control illumination and system tuning via Bluetooth (Free App required), RGB Custom color illumination, Class D design, Bridgeable operation for subwoofer applications, Pass-thru RCA outputs, Inputs: High (speaker wire) and Low (RCA) level, Adjustable high and low-pass crossovers: 32 Hz - 320 Hz, Continuous Power Output: 95W RMS x 2 Channels at 4Ω, 105W RMS x 2 Channels at 2Ω, 225W RMS x 1 Channel at 4Ω BRIDGED (1% THD+N), Maximum Dynamic Power: 140W RMS x 2 Channels at 1kHz at 4Ω, 170W RMS x 2 Channels at 1kHz at 2Ω, 310W RMS x 1 Channel at 1kHz at 4Ω BRIDGED (10% THD+N), Signal to Noise: 72dBA reference 1 Watt RMS, THD+N: <0.14% at 1 Watt RMS from 20Hz to 20kHz, Frequency response: 20Hz - 20kHz, Amplifier dimensions: 2.16" x 6.57" x 5.59" (HxWxD)



JA4B

Jensen DSP Amp app (Apple®/Android™) to control illumination and system tuning via Bluetooth (Free App required), RGB Custom color illumination, Class D design, 2 Ohm stable stereo operation, Bridgeable operation for subwoofer applications, 10 Band EQ (5 per channel), Inputs: High (speaker wire) and Low (RCA) level, Adjustable high and low-pass crossovers: 32 Hz - 320 Hz, Continuous Power Output: 90W RMS x 4 Channels at 4Ω, 115W RMS x 4 Channels at 2Ω, 230W RMS x 2 Channels at 4Ω BRIDGED (1% THD+N), Maximum Dynamic Power: 125W RMS x 4 Channels at 1kHz at 4Ω, 185W RMS x 4 Channels at 1kHz at 2Ω, 365W RMS x 2 Channels at 1kHz at 4Ω BRIDGED (10% THD+N), Signal to Noise: 70dBA reference 1 Watt RMS, THD+N: <0.15% at 1 Watt RMS from 20Hz to 20kHz, Frequency response: 20Hz - 20kHz, Amplifier dimensions: 2.16" x 8.38" x 5.59" (HxWxD)



JA1B

Jensen DSP Amp app (Apple®/Android™) to control illumination and system tuning via Bluetooth (Free App required), RGB Custom color illumination, Class D design, Pass-thru RCA outputs, Adjustable bass boost @ 45Hz via Jensen DSP Amp app, Inputs: High (speaker wire) and Low (RCA) level, Adjustable low-pass crossover: 32 Hz - 320 Hz, Continuous Power Output: 290 W RMS x 1 Channel at 4Ω, 470W RMS x 1 Channel at 2Ω, 595W RMS x 1 Channel at 1Ω (50Hz and 1% THD+N), Maximum Dynamic Power: 325W RMS x 1 Channel at 50Hz at 4Ω, 565W RMS x 1 Channel at 50Hz at 2Ω, 690W RMS x 1 Channel at 50Hz at 1Ω (10% THD+N), Signal to Noise: 72dBA reference 1 Watt RMS, THD+N: <0.14% at 1 Watt RMS from 20Hz to 20kHz, Frequency response: 20Hz - 300Hz, Amplifier dimensions: 2.16" x 9.56" x 5.59" (HxWxD)

Hawk Series Woofers

- Heavy-duty die-cast basket with metal red finish • Kevlar fiber added non-press paper cone with texture finish • Hi-roll high-density foam surround with red stitching • 3" hi-temp 4-layer copper wire voice coil on the aluminum bobbin • 4pcs black poly-cotton spiders with mirror image layout spaced by spider ring, double-thick tinsel stitched on the spider. • 20oz strontium magnet • 1-pc tech T-yoke for maximum excursion • Voice coil direct cooling design motor with heat raptor • 10-gauge pure copper power cable for direct connecting • Rubber gasket and rubber magnet boot
- Dual 40hm impedances

Model	Size	RMS/Peak Power	Voice Coil
HAWK 1044	10"	150W/3000W	4 OHM DVC
HAWK 1244	12"	150W/3000W	4 OHM DVC
HAWK 1544	15"	150W/3000W	4 OHM DVC



Elite Series Woofers

- Impedance (Ohms) - D4 • Magnet Size (Oz) -150 • Heavy Durable stamped basket with black powder finish • Fiber Added Non-Press Paper Cone • Hi-Roll High-Density Foam Surround with Silver Stitching • 3" Hi-Temp 4-Layer Flat Aluminum Wire Voice Coil on Aluminum Bobbin • Double Black Poly -cotton spider with the mirror-image layout • space by spider ring • Double thick tinsile stitched on spider • Double stacked 75 Oz high grade magnets • 1-Pc tech deep bumped T-yoke for maximum excursion • chrome finish push terminal • customs tooled rubber gasket • Rubber Magnet boot to protect motor • Dual 2 Ohm/4 Ohm impedance

Model	Size	RMS/Peak Power	Voice Coil
E1244	12"	1200W/2400W	4 OHM DVC
E1544	15"	1200W/2400W	4 OHM DVC



XD Series Subwoofers

- DVC 4 Ohm Impedance • Stamped Steel Basket • High-Temp Voice Coil (1.5" XD-6.5)

Model	Size	RMS/Peak Power	Voice coil
XD-1044	10"	450W/900W	4 OHM DVC 2.5"
XD-1244	12"	500W/1000W	4 OHM DVC 2.5"
XD-1544	15"	700W/1400W	4 OHM DVC 3"

Also Available In Dual 2 OHM



ES Series Subwoofers

- Dual 4 Ohm Voice Coils • Cast Frame • 2.5" aluminum Voice Coil • 65 oz. Magnet Structure

Model	Size	RMS/Peak Power	Voice Coil
ES-1244	12"	800W/1500W	4 OHM DVC
ES-1044	10"	500W/1000W	4 OHM DVC



DX Series Subwoofers

- SVC 4 Ohm Impedance • Stamped Basket • 2" High-Temp Voice Coil

Model	Size	RMS/Peak Power	Voice coil
DX-154	15"	500W/1000W	4 OHM SVC 2"
DX-124	12"	400W/800W	4 OHM SVC 2"
DX-104	10"	300W/600W	4 OHM SVC 2"



King Series Subwoofers

Model	Size	RMS/Peak Power	VOICE COIL SIZE
AB-THEKING-12D1	12"	6500W/15000W	4.5"
AB-THEKING-12D2	12"	6500W/15000W	4.5"
AB-THEKING-15D1	15"	6500W/15000W	4.5"
AB-THEKING-15D2	15"	6500W/15000W	4.5"



XO Series Subwoofers

• Black powder finish heavy-duty stamped basket • With Perimeter vents for better voice coil cooling • Double stacked hi-energy magnets • Customs-made rubber gasket • Customs-made magnet boot • Designed for everyday use, this high-quality series offers tons of low-end bass that is second to none • It offers reliability, performance in a variety of situations optimized for the everyday bass enthusiast • Non-Pressed Paper Cone • Over-sized 1.4" 3-layer foam surround • Stamped Steel Basket • Push Pin Terminals

Model	Size	RMS/Peak Power	Magnet	Voice Coil
XO-1044	10"	350W/600W	90 oz.	4 OHM DVC
XO-1244	12"	400W/800W	90 oz.	4 OHM DVC
XO-1544	15"	500W/1000W	120 oz.	4 OHM DVC



SL Series Subwoofers

• Dual Double Spider Paper Cone • 2" High Temp. Voice Coil • 80 oz. Magnet

Model	Size	RMS/Peak Power	VOICE COIL
SL-124	12"	300W/600W	4 OHM SVC
SL-104	10"	300W/600W	4 OHM SVC
SL-1044	10"	300W/600W	4 OHM DVC
SL-1244	12"	300W/600W	4 OHM DVC



XFL Series Subwoofers

Model	Size	RMS/Peak Power	VOICE COIL SIZE
XFL-1044	10"	1000W/2000W	3"
XFL-1244-V2	12"	1000W/2000W	3"
XFL-1544-V2	15"	1500W/3000W	3"

Also Available In Dual 2 OHM



Stealth Series Amps

Model	Peak Power	Frequency Response	CHS/Class
STEALTH 3000.1	3000 W	15Hz - 270Hz	1 D
STEALTH 4500.1	4500 W	20Hz - 250Hz	1 D
STEALTH 5500.1D	5500 W	15Hz - 270Hz	1 D
STEALTH 500.4	250 x 4 W	10Hz - 50Hz	4 AB



Midbass & Midranges

Model	Size	Peak Power
GF 10LMR	10"	1000 W
GF 6.5LMR	6.5"	600 W
GF 8LMR	8"	800 W
GODFATHER 6.5CC	6.5"	400 W
GODFATHER 8CC	8"	400 W

CALL FOR ADDITIONAL MODELS



Tweeters

Model	Size	RMS/Peak Power
SQ0-5T	1"	50W/ 100W
SQ-T2	1"	60W/ 120W

CALL FOR ADDITIONAL MODELS



VFL Audio Woofers

• Cast Basket

Model	Size	RMS/Peak Power	Voice Coil
VFL-6D4	6.5"	300W/ 600W	4 OHM DVC
VFL-8D4	8"	800W/ 400W	4 OHM DVC
VFL-8D2	8"	600W/ 1200W	2 OHM DVC
VFL-10D4	10"	800W/ 1600W	4 OHM DVC



VFL COMP Series Amps

• 1 OHM Stable • Digital • Linkable

Model	RMS Power	Frequency Response	Channels
VFL-COMP 1K	1000 W	20hz~350hz	1
VFL-COMP 2K	2000 W	20hz~350hz	1
VFL-COMP 2.5K	2500 W	20hz~350hz	1
VFL-COMP 3K	3000 W	20hz~350hz	1
VFL-COMP 4K	4000 W	20hz~350hz	1
VFL-COMP 5K	5000 W	20hz~350hz	1
VFL-COMP 6K	6000 W	20hz~350hz	1
VFL-COMP 8K	8000 W	20hz~350hz	1
VFL-COMP 12K	12000 W	20hz~350hz	1
VFL-COMP 22K	22000 W	20hz~300hz	1
VFL-COMP 350.4	—	20Hz~20KHz	4

CALL FOR ADDITIONAL MODELS



SYMPHONY SERIES

Model	Size	RMS/Peak Power	Magnet
SYMPHONY 4.0	4"	45W/90W	6.5oz
SYMPHONY 4.6	4.6"	45W/90W	6.5oz
SYMPHONY 5.25	5.25"	75W/150W	9oz
SYMPHONY 5.7	5.75"	100W/200W	13.5oz
SYMPHONY 6.5	6.5"	100W/200W	11oz
SYMPHONY 6.9	6.9"	125W/250W	13.5oz



Sound Processors



AB-7B-V

- High End 7-Band Equalizer Voltage Display • Frequency Steps: 50Hz, 125Hz, 315Hz, 750Hz, 2.2KHz, 6KHz, 12KHz
- 7V Preamp Output • 2 RCA Inputs • Fader Control • Sub Frequency and Volume Control • Dim: 9" L x 8" W x 2" H



ABX-3.1A

- Front and Rear Hi-Pass • Subwoofer Low Pass • Input Impedance: 20K Ohms • Output Impedance: Less than 150 Ohm • 8V Peak Outputs Level • Channel Separation
- Subsonic Filter • Low Pass/High Pass

Amplifier Kits

AB-AK1/O—0 GA. Amp Kit

- 17ft 0 GA. Red Power Cable • 3ft 0 GA. Black Power Cable • 17ft 18 GA. Blue Turn-on Wire • 25ft 12 GA. Speaker Wire
- 17ft Deluxe RCA Interconnect • Two 0 GA. Ring Terminal • 10 Wire Ties • 3 Screws
- Deluxe High Quality Fuse Holder • Gold Plated ANL Fuse(250A)

AB-AK4—4 GA. Amp Kit, ANL

AB-AK4-BLUE— As above, Blue Power Cable

AB-AK4MINIANL—4 GA. Amp Kit

AB-AK8—8 GA. Amp Kit





MICROV2 Series Amplifier

Features:

- Ultra-compact, high density aluminum alloy chassis
- Balanced differential for noise-free operation
- Full-range Class D technology with DirectFET power MOSFET output stage
- Advanced rollback power circuitry
- Built-in BTR port (micro-USB) to connect optional Bluetooth receivers

MODEL	DESCRIPTION
MICRO1V2	1-CH 500W@1Ω, 300W@2Ω FULL RANGE CLASS D
MICRO2V2	2-CH 250WX2@2Ω, 150WX4@4Ω FULL RANGE CLASS D
MICRO4V2	4-CH 150WX4@2Ω, 80W4@4Ω FULL RANGE CLASS D
MICRO5V2	5-CH 150WX4+350WX1@2Ω FULL RANGE CLASS D



Diamond Elite DES Series

Amplifiers Feature:

- Latest high efficiency full-range digital topology utilizing SMD technology and 4-layer PCB
- Continuous equal power output at 2/4 ohm loads, fully variable x-overs, phase/boost
- Hi and Low level input to 12V - switched speaker level turn-on options (VOX/DC Offset/REM)

MODEL	DESCRIPTION
DES400.2D	2-CH 250WX2@2Ω, 200WX2@4 FULL RANGE CLASS D
DES400.4D	4-CH 150WX4@2Ω, 150WX4@4Ω FULL RANGE CLASS D
DES500.1D	1-CH 500WX1@1Ω, 500WX1@2Ω, 450W@4Ω CLASS D
DES1000.1D	1-CH 1000WX1@1Ω, 1000WX1@2Ω, 750W@4Ω CLASS D
DES1000.5D	5-CH 150WX4+600WX1@2Ω, 100WX4+500WX1@4Ω



Diamond Elite DES Series

Subwoofers Feature:

- True-fiber weave paper backed parabolic cone
- High-grade rolled edge six leg black powder coated stamped frame • Dual mirror image spider with woven tinsel leads
- Black PVC wrap-around mounting gasket
- Vented pole and voice coil gap for cooler operation
- Klippel® DA optimized motor and suspension symmetry

MODEL	DESCRIPTION
DES82	8 inch / 203mm - 2Ω DVC 250 WRMS Power Handling
DES84	8 inch / 203mm - 4Ω DVC 250 WRMS Power Handling
DES102	10 inch / 250mm - 2Ω DVC 700 WRMS Power Handling
DES104	10 inch / 250mm - 4Ω DVC 700 WRMS Power Handling
DES122	12 inch / 300mm - 2Ω DVC 900 WRMS Power Handling
DES124	12 inch / 300mm - 4Ω DVC 900 WRMS Power Handling

**LESCO SUPPORTS FL,
IN, KY, OH, WV, and
Western PA.**

CALL FOR DEALER PRICING AND DETAILS

No Internet sales allowed at all.

Territory Restrictions: FL, IN, KY, WV, OH, Western PA

Dealers must be approved by Diamond and Lesco Management.



Diamond DMD Series Shallow Mount Subwoofers Feature:

- True-fiber weave paper backed parabolic cone, 3" mounting depth
- High-density NBR half-roll surround optimized for linear travel
- Protective ABS contemporary designed front trim piece
- Die cast frame with integral under and over spider venting
- Klippel® DA optimized motor and suspension symmetry

MODEL

DMD102SH
DMD104SH
DMD122SH
DMD124SH

DESCRIPTION

10 inch / 250mm - 2Ω DVC 250 WRMS Power Handling
10 inch / 250mm - 4Ω DVC 250 WRMS Power Handling
12 inch / 300mm - 2Ω DVC 300 WRMS Power Handling
12 inch / 300mm - 4Ω DVC 300 WRMS Power Handling



Diamond DMD Series Subwoofers Feature:

- High-density NBR half-roll surround optimized for linear travel
- Unique, high-strength, motor structure bonding process ensure a stable motor structure
- High-temperature copper voice coil on high-strength aluminum former
- Klippel® DA optimized motor and suspension symmetry

MODEL

DMD102
DMD104
DMD122
DMD124

DESCRIPTION

10 inch / 250mm - 2Ω DVC 200 WRMS Power Handling
10 inch / 250mm - 4Ω DVC 200 WRMS Power Handling
12 inch / 300mm - 2Ω DVC 200 WRMS Power Handling
12 inch / 300mm - 4Ω DVC 200 WRMS Power Handling



Diamond DMD Series Coaxial Speaker Systems Features:

- 20mm Neodymium Silk Dome Tweeters, Integrated 12dB /Octave Crossover
- 13mm PEI Dome Super Tweeters on 3-Way and 4-Way models, Klippel® certified
- Featherweight translucent composite poly cone with stamped pattern

MODEL

DMD35
DMD42
DMD52
DMD652
DMD653
DMD683
DMD693

DESCRIPTION

3.5"/87mm Full-Range 20W
4"/110mm coaxial with 20mm PEI Dome Tweeter 30W
5.25/142mm coaxial with 20mm PEI Dome Twtr 40W
6.5"/165.5mm coaxial with 20mm Silk Dome Twtr 50W
6.5" 3-way 13mm PEI and 20mm Silk Dome Twtr 50W
6"x8" 3-way with 13mm PEI & 20mm Silk Dome 40W
6"x9" 3-way with 13mm PEI and 20mm Silk Dome 70W

**LESCO
SUPPORTS FL,
IN, KY, OH,WV,
and
Western PA.**

CALL FOR DEALER PRICING AND DETAILS

No Internet sales allowed at all.

Territory Restrictions: FL, IN, KY, WV, OH, Western PA

Dealers must be approved by Diamond and Lesco Management.



Diamond Elite DES Series Component Speaker Systems Feature:

- Composite foam core carbon fiber cone, composite ABS frame design
- 25mm aluminum dome tweeter with Ferrofluid cooling, Klippel® certified
- External Translucent 18dB per octave SQ matched x-over with RAF on DES65C/DES65V

MODEL
DES65C
DES65V
DES69C
DES365C
DESK3
DESTAK

DESCRIPTION
6.5"/165.5mm 2-way w/ 25mm Alum Dome Twtr 60W
6.5"/165.5mm 2-Conv w/ 25mm Alum Dome Twtr 75W
6"x9" 2-way w/ 25mm Alum Dome Twtr 75W
6.5"/165.5mm 3-way Comp - 1"/Alum Twtr 3.5"/Mid
3-Way Kit - 3.5"/87mm spkr w/ adaptive crossover 25W
Tweeter Add-On Kit - 1"/25mm Alum Twtr/X-over 50W



Diamond Elite DES Series Coax Speaker Systems Feature:

- Composite Foam Core Carbon Fiber Cone, composite ABS frame design
- 25mm Aluminum Dome Tweeter with Ferro Fluid Cooling
- Integrated 12dB / Octave crossovers
- Klippel® DA optimized motor and suspension symmetry

MODEL
DES525
DES652
DES682
DES692

DESCRIPTION
5.25"/142mm w/ 25mm Aluminum Dome Tweeter 50W
6.5"/165.5mm w/25mm Aluminum Dome Tweeter 60W
6"x8"/140.6x219 mm w/25mm Alum Dome Twtr 50W
6"x9"/162.8 x 239 mm w/ 25mm Alum Dome Twtr



Diamond DMD Series Component Speaker Systems Feature:

- High-strength ABS injection molded frame, FEA optimized high-power ferrite motor
- Featherweight translucent comp poly cone w/ stamped pattern, 20mm silk dome tweeter
- Separate optimized crossover module for component system
- Klippel® DA optimized motor and suspension symmetry

MODEL
DMD65C
DMD65V
DMD69V
DMDTAK

DESCRIPTION
6.5"/165.5mm comp - 20mm Silk Dome Tweeter 50W
6.5"/165.5mm conv - 20mm Silk Dome Tweeter 50W
6"x9"/162.8 x 239mm conv - 20mm Silk Twtr 70W
Add-on Tweeter kit - .75" /20mm Silk Dome Twtr 40W

**LESCO
SUPPORTS FL,
IN, KY, OH,WV,
and
Western PA.**

CALL FOR DEALER PRICING AND DETAILS

No Internet sales allowed at all.

Territory Restrictions: FL, IN, KY, WV, OH, Western PA

Dealers must be approved by Diamond and Lesco Management.

POWERSPORTS



MOTORSPORT Series Pro Style Speaker Features:

- Midrange Manufactured to IP65 Marine Grade Compliant Specifications
- Shorting Ring Utilized In Motor Structure For Far-Field Performance
- Thermal Molded Waterproof Paper Cone
- UV-Treated Polycarbonate Cloth Surround

MODEL
MSPR065
MSPR08

DESCRIPTION
6.5" Pro Style High Output Midrange 400W RMS, pair
8" Pro Style High Output Midrange 500W RMS, pair



MOTORSPORT Series Speaker Pods

- 2-Way Speaker System , Pair
- IP65 Marine Grade Compliant Specifications, 100%
- UVStableUltra Small High BL Neodymium Motor Structure w/ MaxXmax Suspension
- Low Profile/Light Weight Design Ideal for MotorcyclePC Injection Molded Composite Basket w/ Waterproof Terminal InputMolded. Injection ASA Grill w/ UV-Coated, 316 StainlessMetal Mesh Waterproof
- Integrated Digital LED Lighting Ring

MODEL
POD65F4B
POD65F4W
POD8F4B
POD8F4W
POD10F4B
POD10F4W

DESCRIPTION
6.5" 2 Way Speaker Tower POD - Black
6.5" 2 Way Speaker Tower POD - White
8" 2 Way Speaker Tower POD - Black
8" 2 Way Speaker Tower POD - White
10" 2 Way Speaker Tower POD - Black
10" 2 Way Speaker Tower POD - White

**LESCO SUPPORTS FL,
IN, KY, OH,WV, and
Western PA.**

CALL FOR DEALER PRICING AND DETAILS

No Internet sales allowed at all.
Territory Restrictions: FL, IN, KY, WV, OH, Western PA
Dealers must be approved by Diamond and Lesco Management.

POWERSPORTS



MODEL
MSHXM694LK
MSMP694LK
MSMS694LK

DESCRIPTION

Harley Davidson Cut in Lid Kit with HXM69F4 Speaker
Harley Davidson Cut in Lid Kit with MP694 Speaker
Harley Davidson Cut in Lid Kit with MS69CX Speaker



MODEL
MS65NEO
MS8NEO
MS69NEO

DESCRIPTION

6.5" Neodymium Midrange 300W RMS, pair
8" Neodymium Midrange 350W RMS, pair
6x9" Neodymium Midrange 350W RMS, pair

- Neodymium Midrange
- Sensitivity(SPL):98.5dB 1W/M
- 2.0 inch Black American Voice Coil
- Waterproof Black 3K Kevlar Cone
- Waterproof Black 3K Kevlar Dust Cap



MODEL
MP525
MP654
MP694
MP84

DESCRIPTION

Motor-sport Series 5.25" Pro Compression Integrated Horn
Motor-sport Series 6.5" Pro Compression Integrated Horn
Motor-sport Series 6" x 9" Pro Compression Integrated Horn
Motor-sport Series 8" Pro Compression Integrated Horn

- High Temp NEO Magnet Structure
- Heavy Duty Cast Aluminum Basket
- Advanced Voice Coil Heat Sink Design for Better Heat Dissipation
- 1.5"- 2.0" Single Layer High Temp Black Coated Voice Coil former for Woofer
- 1.0" Single Layer High Temp Voice Coil for Tweeter

**LESCO SUPPORTS FL,
IN, KY, OH, WV, and
Western PA.**

CALL FOR DEALER PRICING AND DETAILS

No Internet sales allowed at all.
Territory Restrictions: FL, IN, KY, WV, OH, Western PA
Dealers must be approved by Diamond and Lesco Management.



MOTORSPORT Diamond Series Amplifiers Features:

- Compact waterproof amplifiers • Full-range digital Class D technology with Direct FET power MOSFET output stage • Advanced rollback power circuitry

MODEL	DESCRIPTION	MASTER
DXM600.2D	2-CH 300W X2 @ 2Ω, 200W x2 @ 4Ω FULL RANGE CLASS D	5
DXM800.4D	4-CH 200W X4 @ 2Ω, 125W X4 @ 4Ω FULL RANGE CLASS D	5
DXM1200.1D	1-CH 1200W X1 @1Ω, 800W X1 @ 2 Ω FULL RANGE CLASS D	5
DXM10000.6D	6-CH 170W X6 @ 2 Ω, 1100W X6 @ 4Ω FULL RANGE CLASS D	5



MICRO8U Series Amplifier Features:

- High-power full-range digital Class D advanced technology IRS chipset
- Conformal coated IPX certified 4-layer black PCB • Remote REM/DC/VOX turn on trigger • Variable/switchable crossoverson multi-channel models
- Uniformed heatsink chassis size/dimensions on all models

MODEL	DESCRIPTION	MASTER
MICRO81U	1-CH 600W X1 @ 1Ω, 400W X1 @ 2Ω, 240W X1 @ 4Ω	6
MICRO82U	2-CH 300W X2 @ 2 Ω, 200W X2 2Ω, 600W X1 @ 4ΩBR	6
MICRO84U	4-CH 165W X4 @ 2Ω, 90W X4 @ 4 Ω, 275W X2 @ 4ΩBR	6
MICRO85U	5-CH 165W X4 + 375W X1 @ 2Ω	6
MICRO86U	8-CH 75W X8 + 250W X1 @ 4Ω, 110W X8 + 375W X1 @ 2Ω	6



MOTORSPORT Hex Series Amplifiers Features:

- Conformal coted multi-layer-circuit boards for marine applications
- Balanced differential inputs for noise-free operation regardless of the source • Full range digital Class D technology with Direct FET power Mosfet output stage

MODEL	DESCRIPTION	MASTER
HXM800.2D	2-CH 350W X2 @ 2Ω, 200W X2 @ 4Ω, FULL RANGE CLASS D	4
HXM800.4D	4-CH 185W X4 @ 2Ω, 120W X4 @ 4Ω, FULL RANGE CLASS D	4
HXM800.1D	1-CH 800W X 1 @ 1Ω, 500W X1 @ 2Ω, FULL RANGE CLASS D	4
HXM1200.1D	1-CH 1200W X1 @ 1Ω, 850W X1 @ 2Ω, FULL RANGE CLASS D	4
HXM1100.6D	6-CH 150W X4 + 250W X2 @ 2Ω, FULL RANGE CLASS D	4



Diamond Series Powered Active Subwoofer Features:

- 300W 10" powered active subwoofer in tuned ported enclosure
- Die-cast aluminum enclosure measures only 13.25 x 9.5 x 2.75 inches
- Easily integrates under the seat or into an interior compartment of most cars and trucks • Perfect "ready-made" bass solution for your sound system

MODEL	DESCRIPTION	MASTER
DPAS10	Diamond 10" Powered Active Subwoofer	2
DPRS10	Diamond 10" Powered Active Radiator Port Design	2

Source Units



PDN-1060HB - DVD - Includes GPS navigation

- 50 state GPS maps with 17 million points of interest
- Swiveling 10.3" LCD
- 2 DIN Multimedia system
 - front camera input with on-screen trigger
 - 10-band equalizer
 - Bluetooth 4.0 and A2DP audio streaming
- Android phonelink mirrors and controls phone
- DVD,DVDR,CD,CDR ,SD card
- 1080p MP4 and WMV playback

10.3"

- 300 watt 4 channel amplifier
- Back-up rear camera input w/trigger



DVD

PD-1060HB - DVD - No navigation



PL-622HB - DVD/CD Bluetooth

- Bluetooth 4.0 Hands-free calling and A2DP wireless audio playback
- Accepts OEM Steering Wheel Control Interfaces
- MHL PhoneLink for compatible Android phones enables you to have complete 2-way control and mirrors your phone on the radio's screen.
- Advanced FM/AM Tuner with RDS
- Playback from DVD & CD of MP3 & MP4
- Playback from 64GB SD/USB of MP3 & MP4
- ID3 MP3 Tag Reading for Track & Artist Information
- 6.2" All Glass Capacitive Touch Screen
- LCD Screen (800×480) supports 720p video playback
- Multi-band Audio Equalizer w/ Presets
- Front & Rear Pre-Amp Audio Outputs
- Rear View Camera Input w/ Trigger
- 300w 4ch. MOSFET Speaker Outputs



CPAA-70M - MECHLESS

- Mechless Unit (No DVD/CD Drive Slot)
- Apple CarPlay® Built-in w/ Siri Assistant
- Android Auto® Built-in w/ Google Assistant
- Bluetooth Phone Calling + A2DP Wireless Streaming
- HD Media Playback from USB & Micro SD Card



PD-623B - DVD

- Double DIN 6.2" Widescreen (16:9) LCD Touch-Screen Receiver with DVD Player
- Built-in Bluetooth V4.0
- Front Panel Bluetooth Microphone
- USB Input
- 3.5mm AUX Audio Input
- Front and Rear RCA Pre-Amp Audio Outputs
- Rear A/V Input
- Video Output
- Rear View Camera Input
- Accepts OEM Steering Wheel Control Interfaces
- Remote Control Included



CPAA-70D - DVD

- 2-Din DVD Multimedia System W/ 7" LCD
- ISO 2-Din Chassis, Mounting Brackets Included
- Apple CarPlay With Siri Eyes Free Built-In
- Made For iPhone Multimedia Content Browsing
- Android Auto With Google Assistant Built-In
- HD 7" 1,024 × 600 LCD W/ Adjustable Backlight
- SmartSense Clear Glass Capacitive Touchscreen
- 7-Color RGB LED Illuminated Keys & Accents
- Bluetooth 4.0 Phone Calling + A2DP Audio Streaming
- External Microphone For Hands-Free3 Calling Included
- Steering Wheel Remote Control Input(S) Included
- 10-Band 12dB Boost/Cut EQ & Surround Sound Effects
- RCA Back-up Camera Input w/ +12V Auto-on Trigger
- Front Camera RCA Input w/ On-Screen Trigger



CPAA-70D10F- MECHLESS

- DVD Multimedia Headunit W/ Floating 10.6" Monitor
- ISO 2-Din Chassis, Mounting Brackets Included
- SmartSense Clear Glass Capacitive Touchscreen
- Apple CarPlay With Google Assistant Built-In
- Android Auto With Google Assistant Built-In
- 7-Color RGB LED Illuminated Keys & Accents
- Bluetooth Built-in /A2DP For Wireless Audio Streaming
- 10-Band 12dB Boost/Cut EQ & Surround Sound Effects
- Front & Back-up Camera Input w/ +12V Auto-on Trigger
- Video & Audio Playback from DVD, DVDR, CD, & CDR Discs
- Video & Audio Playback from 64GB USB or Micro SD Card
- 1080p MP4 & WMV Video Playback; MP3 & WMA Playback
- AUX (3.5mm) Input for External Devices on Front Panel
- 5Ch Preamp RCA Outputs; Front + Rear + 4V Subwoofer
- RCA A/V Input for External Source Input + Video Output
- 2-Ohm Stable 300w Max 4Ch. Full Range Amplifier Built-in



NAV

PDN-721HB - DVD Bluetooth

- Universal Mounting Sleeve Included
- 7" 800×480 16:9 Aspect Ratio Widescreen LCD
- Detachable Front Panel
- SmartSense Glass Panel Touch Screen Technology
- Bluetooth V4.0 Hands-Free Calling
- Accepts OEM Steering Wheel Control Interfaces
- Playback from DVD & CD of MP3, MP4 & Other Video
- Playback from 64GB USB of MP3, MP4 & Other Video
- 3.5mm AUX Audio Input
- Video Output for Auxiliary Devices
- Rear View Camera Input w/ Trigger
- 300W 4CH. MOSFET Speaker Outputs
- Subwoofer RCA Pre-Amp Audio Output
- Remote control included

PD-721B- As above No Navigation & No Android Phone Link

Source Units



PL-60BM

- Quick Smartphone Voice Control Touch Button • Dual USB Slots — Fast Charge & Play Music • Included Slim Wireless Remote Control • Full Touch Key Controls Front Panel • Built-in Motion Sensor for Quick Hand Gesture Control • Bright LCD Display w/ Spectrum Analyzer Animation • Bluetooth Connectivity works with any Smartphone • FM/AM Freq. 87.5 — 107.9MHz / 530 — 1710KHz • Preset Memory 18 for FM & 12AM • Power Supply 11 — 16V DC • Speaker Impedance 4Ω



PCD-52B - CD Bluetooth

- Double DIN CD/MP3/AM/FM Receiver w/SD/USB Playback w/Bluetooth • Playback from 32GB USB of MP3 & WMA • Playback from CD/CDR/CDRW of MP3/WMA • AUX Audio Input • Front & Rear Pre-Amp Output • Remote Control and Faceplate Carry Case Included



PCD-51B - CD Bluetooth

- Single DIN CD/MP3 Player AM/FM Receiver with SD/USB Playback • Built-in Bluetooth • Playback from 32GB USB of MP3/WMA • Playback from CD CDR/CDRW of MP3/WMA • Auxiliary Audio Input • Front/Rear Preamp Output • Remote Control and Detachable Faceplate w/Carry Case Included



PTID-8920B - DVD Bluetooth

- Single DIN Motorized 7" LCD Touchscreen Receiver • Bluetooth v2.0 • Detachable Faceplate • A2DP Wireless MP3 Audio Playback from Enabled Devices • Playback from DVD/CD of MP3/MP4 and from 32GB SD/USB of MP3/MP4 • Auxiliary A/V Input • Front & Rear Preamp Audio Outputs • Video Output • Rear View Camera Input



PD-710B - DVD Bluetooth

- Single DIN Multimedia Receiver with 7" LCD Touchscreen • Bluetooth v2.0 • A2DP Wireless MP3 Audio Playback from Enabled Device • Playback from DVD/CD of MP3/MP4 & 32GB SD/USB of MP3/MP4 • AUX A/V Input • Front & Rear Preamp Audio Outputs • Video Output • Rearview Camera Input



PD-724B - DVD Bluetooth

- Single DIN Motorized 4.5" LCD Receiver w/Built-in Bluetooth • A2DP Wireless MP3 Audio Playback from Enabled Devices • Playback from DVD/CD of MP3/MP4 and from 32GB SD/USB of MP3/MP4 • AUX Audio Input • Front and Rear Preamp Audio Outputs • Variable Subwoofer Preamp Output • Video Output • Rear View Camera Input with Trigger



PADVD-390 - DVD

- Single DIN In-Dash DVD Player • DVD/RW/CD/RW/32GB SD Card/USB of MP3/MP4/DivX Playback • Auxiliary Audio/Video Input



PD-627B - DVD

- ISO 2-Din chassis with a 6.2" All Glass Capacitive touch screen. 800x480 resolution that supports 720p video playback. Bluetooth 4.0 Hands free calling with built-in microphone and A2DP wireless audio playback. DVD video & CD Audio playback, w/ front panel USB up to 32G port. Rear camera input and front panel AV Input. RGB color light up display. Wireless remote control included. Bluetooth

Ceiling Mount Flip-Down Monitor

PMD-103X - DVD

- 10.3" High Resolution LCD Screen • (16:9) • Inter-changeable Color Skins (Beige, Black, Grey) • Playback from DVDR/RW of MP4 & AVI • Rear Panel RCA A/V Input from Game Console • Pre-Amp Audio Outputs • Single Channel Wireless IR Trans-mitter (use HIR-1 or HP-11S) • 330 Ch. FM Stereo Transmitter for OEM Integration • Full Function Remote Control Included • NTSC / PAL Auto Selection • 400 NIT Screen Brightness



PHD-101

- Bracket Mount DVD Player Solution for Vehicles w/ Active Headrest
- Single Channel Wireless IR Transmitter (use HP-11S Headphones)
- FM Stereo Transmitter for Easy OEM Integration • AUX A/V Input for Game Console or Personal Media Devices • RCA A/V Input for Auxiliary Source or Opposite Headrest • 3.5mm Hardwired Headphone Output Jack • *MHL MobileLink Input for Smart Device Connectivity (HDM-A3 or HDM-i4 Cable Required at Extra Cost)



PMD-130H

- Interchangeable Color Skins (Beige, Black, Grey) • Car-Spec DVD Drive for Extreme Temperature Exposure • 90°/180° Swivel Screen for Angled Viewing • MHL MobileLink Input for Smart Device Connectivity • Playback from DVDR/RW of 720p MP4 • Playback from 32GB SD Card or USB of 720p MP4 • Dual-Channel Wireless IR Transmitter (use HP-12S) • 8-ch FM Stereo Transmitter for OEM Integration • RCA & 3.5MM A/V Input for Auxiliary Sources • RCA A/V Output for Multiple Component Integration • Triggered Bright White LED Dome Light • 6-Color RGB LED Accent Lighting • NTSC / PAL Auto Selection • 1,366 x 768 16:9 Widescreen Resolution • 400 NIT Screen Brightness • Dimensions: 16.5" W x 13.25" D x 2.25" H



7" + 9" HEADREST

HDVD-91CC

- 9" LCD Widescreen (16:9) Universal Headrest w/ Front Loading DVD Player • 3 Sets Interchangeable Snap-on ColorSkins (Grey/Beige/Black)
- SDHC CardReader • USB 2.0 Port • 3.5mm AUX Audio Input • FM and Dual Channel Wireless Infrared Transmitters • AudioVideo RCA Input • Pole Width Adjustment and Locking Pole Adapters

ADDITIONAL MODEL

H-91CC - As Above no DVD



HDVD-71CC

- Forward/Backwards Tilting Headrest • 3 Changeable Color Skins Included (Grey, Beige, Black) • Playback from DVDR/RW of 720p MP4 • Playback from 32GB SD Card or USB of MP4 • Dual Channel Wireless IR Transmitter (use HIR-2 or HP-12S) • FM Stereo Transmitter for OEM Integration • AUX A/V Input for Game Console or Personal Media Devices • RCA A/V Input for Auxiliary Source or Opposite Headrest • RCA A/V Output to Auxiliary Source or Opposite Headrest • Hardwired Headphone Output • 3/8" Locking Pole w/ 1/2" & 9/16" Adapters • 4.75" ~ 8.25" Pole Width Adjustment • NTSC / PAL Auto Selection • 800 x 480 16:9 Widescreen Resolution • 400 NIT Screen Brightness • Dimensions: 10" W x 7" H x 5.5" D

ADDITIONAL MODEL

H-71CC - As Above 7" LCD no DVD

VERTIGO Amplifiers

Class A/B Full Range & Class D Monoblock Amplifiers Hybrid Aluminum Alloy Heatsink for Optimum Dissipation 2-ohm Stereo & 4-ohm Bridged Class A/B Full Range 1-ohm Minimum Impedance Class D Monoblock Operation MOSFET Power Supply w/ Audiophile Grade IRTM Transistors Military Grade SMT PCB Maintains Dynamic Performance



Models	Max Power	2 Bridged	2 RMS	4 RMS	Remote Gain
VA2-1400D	1,400	1 x 400	2 x 200	2 x 120	-
VA4-1800D	1,800	2 x 320	4 x 160	4 x 100	-
VA4-2200D	2,200	2 x 400	4 x 200	4 x 120	-
VA1-1600D	1,600	-	1 x 360	1 x 200	INCLUDED
VA1-4000D	4,000	1 x 1,000 (1)	1 x 600	1 x 350	INCLUDED
VA1-6000D	6,000	1 x 1,800 (1)	1 x 1,000	1 x 600	INCLUDED
VA1-8000D	8,000	1 x 2,600 (1)	1 x 1,400	1 x 850	INCLUDED
VA1-10000D	10,000	1 x 3,500 (1)	1 x 2,000	1 x 1,200	INCLUDED

Razor Class D Full Range Amplifiers

• Mosfet PWM Power Supply • Small Compact 4.75" Wide Chassis • High Pass Low Pass Crossover • Low Level Input Sensitivity • High Level Input • Dash Mount Remote Gain Control Included



Model	Channels	4 RMS	2 RMS	4 Bridged	Max Power	Remote Gain
RZ4-1200D	4	100W x 4	150W x 4	300W x 2	1200W	-
RZ4-2000D	4	190W x 4	250W x 4	500W x 2	2000W	-
RZ4-2000DSP	4	190W x 4	250W x 4	500W x 2	2000W	-
RZ4-3000D	4	285W x 4	375W x 4	750W x 2	3000W	-
RZ5-2500D	5	100W x 4 + 400W x 1	150W x 4 + 600W x 1	300W x 2 + 600W x 1	2100W	Yes
RZ5-2500DSP	5	100W x 4 + 400W x 1	150W x 4 + 600W x 1	300W x 2 + 600W x 1	2500W	Yes
RZ1-1500D	1	600W x 1	900W x 1	-	1500W	Yes
RZ1-2300D	1	900W x 1	1400W x 1	-	2300W	Yes
RZ1-3500D	1	900W x 1	1400W x 1	2100W x 1	3500W	Yes

Tweeters



NB-1

• 2-Way Mount Tweeter • Built-In Crossover
• 100 Watts RMS/200 Watts Peak • Niobium Rare Earth Ferroelectric Transducer Magnet
• Surface/Angle Mount



NB-2

• 3-Way Mount Tweeter • Niobium Rare Earth Ferroelectric Transducer Magnet • Built-In Crossover • 100 Watts RMS/200 Watts Peak
• Surface/Angle Mount



NB-4

• 4-Way Mount Tweeter • Built in Crossover
• Niobium Rare Earth Ferroelectric Transducer Magnet • 250 Watts • Swivel/Surface/Angle Mount/Flush Mount • 4 Ohm Impedance

Pro Audio Tweeters

NX-5

• Bullet Tweeter • Titanium Diaphragm • Cast Aluminum Frame • 1.25" High Temperature Voice Coil • Heavy Stamped Steel Basket
• High Strength Magnet • 200 Watts • 4 Ohms





MM1 Series Subwoofers



Model	Size & Type	RMS/Peak Watts	Frequency Response
MM842SVC	8" Subwoofer	300W/900W	30Hz-200kHz
MM842DVC	8" Subwoofer	300W/900W	30Hz-200kHz
MM1042SVC	10" Subwoofer	400W/1200W	28Hz-200kHz
MM1042DVC	10" Subwoofer	400W/1200W	28Hz-200kHz
MM1242SVC	12" Subwoofer	420W/1260W	26Hz-200kHz
MM1242DVC	12" Subwoofer	420W/1260W	26Hz-200kHz

MM1 Series Full Range Speakers



Model	Size & Type	RMS/Peak Watts	Tweeter	Frequency Response
MM522	5.25" Coaxial (PR)	100W/300W	1" Soft Dome	50Hz-40kHz
MM572	5" x 7" Coaxial (PR)	100W/300W	1" Soft Dome	35Hz-40kHz
MM652	6.5" Coaxial (PR)	100W/300W	1" Soft Dome	35Hz-40kHz
MM692	6" x 9" Three Way (PR)	150W/450W	1" Soft Dome	30Hz-40kHz
MM6502	6.5" Component (PKG)	125W/375W	1" Soft Dome	35Hz-40kHz

DB+ Coaxial Speakers and Components



Marine Certified

The DB+ Series is IP65 rated so it's dirt - and water-resistant. It also has been tested for salt-fog, UV and humidity. A big part of that marine certification also means that each speaker has a non-corrosive plastic grille, a polypropylene UV tolerant cone, water-proof inner and outer surrounds, and stainless steel mounting hardware, ensuring that it's fully protected against the elements



Model	Size & Type	RMS/Peak Watts	Tweeter	Frequency Response	Impedance
DB402	4" Coaxial	45W/135W	0.75"	60-22kHz	4 Ohm
DB522	5.25" Coaxial	100W/300W	0.75"	55-22kHz	4 Ohm
DB652	6.5" Coaxial	100W/300W	0.75"	40-22kHz	4 Ohm
DB462	4 x 6" Coaxial	50W/150W	0.75"	50-22kHz	4 Ohm
DB572	5 x 7" Coaxial	75W/225W	0.75"	35-22kHz	4 Ohm
DB692	6 x 9" 3-Way	150W/450W	0.75" + 0.5"	30-22kHz	4 Ohm
DB5252	5.25" Component	150W/450W	0.75" + 0.5"	50-23kHz	4 Ohm
DB6502	6.5" Component	100W/300W	0.75"	35-23kHz	4 Ohm

DB+ Series Subwoofers



Model	Size & Type	RMS/Peak Watts	Frequency Response
DB842SVC	8" Subwoofer	250W/750W	30Hz-200kHz
DB842DVC	8" Subwoofer	250W/750W	30Hz-200kHz
DB1042SVC	10" Subwoofer	350W/1050W	28Hz-200kHz
DB1042DVC	10" Subwoofer	350W/1050W	28Hz-200kHz
DB1242SVC	12" Subwoofer	370W/1110W	26Hz-200kHz
DB1242DVC	12" Subwoofer	370W/1110W	26Hz-200kHz

Source Units



VRCPAA-106F - DVD/CD

- 10.6" LCD Screen • 30% Larger Screen over Traditional 7" Models • Apple CarPlay® & Android Auto® Built-in • Fits Standard 2-DIN Dash Kits/Brackets • Front & Rear Parking Camera RCA Inputs • Media Playback: DVD, USB, MicroSD Card



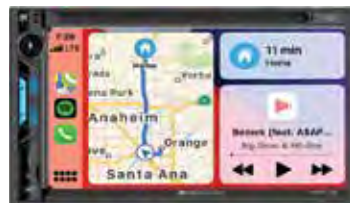
VRCPAA-106M - MECHLESS

- 10.6" LCD Screen • Mechless Headunit (No Disc/DVD Drive) • 30% Larger Screen over Traditional 7" Models • Apple CarPlay® & Android Auto® Built-in • Fits Standard 2-DIN Dash Kits/Brackets • Front & Rear Parking Camera RCA Inputs • Media Playback: DVD, USB, MicroSD Card



VRCPAA-70M - MECHLESS

- 7" LCD Screen • Mechless Unit (No DVD/CD Drive Slot) • Apple CarPlay Built-in w/ Siri Assistant • Android Auto Built-in w/ Google Assistant • HD Quality High-Resolution TFT-LCD Display • Extended Rear USB 2A 5V Phone Integration



VRCPAA-7DR - MECHLESS

- 7" LCD Screen • Apple CarPlay Built-in w/ Siri Assistant • Android Auto Built-in w/ Google Assistant • HD Quality High-Resolution TFT-LCD Display • Bluetooth HF Calling + Audio Streaming



VM-622HB - MECHLESS

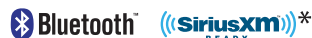
- 2-DIN Multimedia System w/ 6.2" LCD • ISO 2-DIN Chassis, Mounting Brackets Included • HD 6.2" 800x480 LCD with Adjustable Backlight • Smartsense Clear Glass Capacitive Touchscreen • Bluetooth 4.0 Phone Calling + A2DP Audio Streaming • Back-up Camera RCA Input with +12V Auto-On Trigger



VCD-21B -CD

- Single DIN CD/MP3/AM/FM Receiver w/Built-in Bluetooth • Detachable Face • 32GB USB Playback • AUX Audio Input • Front & Rear Pre-Amp Output • Remote Control Included • Faceplate Carry Case Included

VM-21B—As above No CD- MECHLESS



VRN-75HB-DVD/NAVIGATION

- Single DIN GPS/DVD/CD/MP3/AM/FM Receiver with 7" LCD(LED Backlight) • Built-in Bluetooth • Android PhoneLink • AUX Audio Input • Front and Rear Pre-Amp Audio Output • Video Output • Rear View Camera Input • SiriusXM Ready • iGo GPS Navigation

VR-75XB - SiriusXM No Navigation or Android PhoneLink

VR-75B -Standard Features



VDVD-165-DVD

- Single DIN DVD Player • Playback from DVDR/RW or MP4 • Playback from 32GB USB of MP4 • In-Dash, Floor, and Vertical Mounting Brackets Included and DIN Size Trim-Ring for In-Dash Mounting Included • Remote Control & Infrared Repeater Included • OSD (On-Screen Display) • Digital Anti-Shock • 2v A/V Preamp Outputs



VR-624B - DVD/CD

- 6.2" Double DIN DVD/CD Headunit w/ Bluetooth Streaming • DVD, USB & Aux Inputs for Media Playback • 2A 5V Adaptive Fast Charge Front USB • Backup Rear Camera Input w/ 12V Trigger



VR-720B-DVD/NAVIGATION

- 7" LCD Single DIN Flip Up DVD w/ Bluetooth 4.0 • Motorized Angle Adjustment • Detachable Theft Deterrent Front Panel • Playback from DVDR/RW or CDR/RW of MP3, MP4 • Playback From 32GB SD Card or USB of MP3, MP4 • Bluetooth V4.0 Hands-Free Calling from Enabled Device • A2DP MP3 Audio Playback from Enabled Device • ID3 Tag Reading for Track & Artist Information • Rear View Camera Input w/ Trigger • Multi-Region FM Frequency Stepping • 800 x 480 Widescreen Resolution

Authorized Dealers Only
— Call your Sales-Rep for Details —
— Territory Restrictions —

* ((SiriusXM)) \$70 REBATE AND 3 MONTH FREE ALL ACCESS*
 SUBSCRIPTION REQUIRED*

Stealth Full Range Amplifiers

• High Efficiency Class D Full Range Amplifiers • Hybrid Aluminum Alloy Heatsink • Mosfet Power Supply w/Audiophile Grade IRTM Transistors • High Level or Low Level RCA Input • Quick Disconnect RCA/High Level Wire Harness • Variable High Low Pass, and Subsonic Crossovers • Quick Disconnect Power and Speaker Output Harness Output Terminals • Direct Short, Thermal, Overload Circuits Protect Amplifier *with Built-in Bluetooth



Model	Channels	4Ω RMS	2Ω RMS	Bridged 4Ω	Max Power	Remote Gain
ST1.500D	1	150W x 1	250W x 1	-	500W	-
ST4.500D	4	45W x 1	65W x 1	125W x 2	500W	-
ST2.500D	2	75W x 1	125W x 1	250W x 1	500W	-
ST1-1000D	1	350W x 1	500W x 1	-	1000W	Yes
ST2.1000D	2	140W x 2	250W x 2	500W x 1	1000W	Yes
ST3.1000D	3	65W x 2 + 200W x 1	100W x 2 + 300W x 1	200W x 1 + 300W x 1	1000W	Yes
ST4.1000D	4	90W x 4	125W x 4	220W x 2	1000W	-
ST4.1000DB*	4	90W x 4	125W x 4	220W x 2	1000W	-
ST4.1200D	5	100W x 4	150W x 4	300W x 2	1600W	-
ST5.1300D	5	60W x 4 + 220W (Ch5)	90W x 4 + 300W (Ch5)	-	1300W	-

Tarantula Extreme

Tarantula Extreme offers tenacious 2ch & 4ch full-range amplifiers, each with impedance stability down to 1-ohm per channel or 2-ohm bridged (yes, you read that right, 1-ohm stereo & 2-ohm bridged). For your subwoofers, knarley 1,200w and 2,300w monoblocks are available. Finally, for you psychotic bassheads out there, insane 4,300w & 7,000w monoblocks

Model	MAX Power	RMS Power 4Ω	RMS Power 2Ω	RMS Power 1Ω	Remote Gain Control
TXP2.6500D	6500W	400W x 2	700W x 2	1,250W x 2	INCLUDED
TXP4.3500D	3500W	140W x 4	235W x 4	375W x 4	-
TXP1.3500D	3500W	450W x 4	800W x 4	1250W x 1	INCLUDED
TXP1.6000D	6000W	700W x 1	1200W x 1	2300 x 1	INCLUDED
TXP1.12000D	12000W	1300W x 1	2300W x 1	4300W x 1	INCLUDED
TXP1.18000D	18000W	1800W x 1	3600W x 1	7000W x 1	INCLUDED



Picasso Nano Full Range Amplifiers

• Class D Full Range Amplifier • Mosfet PWM Power Supply • Small Compact 4.75" Wide Chassis • Low Level Input Sensitivity • High Level Input



Model	Channels	4Ω RMS	2Ω RMS	Bridged 4Ω	Max Power	Remote Gain
PN4.520D	4	100W x 4	130W x 4	260W x 2	-	-
PN1.650D	1	400W x 1	650W x 1	-	-	Yes
PN2.350D	2	115W x 2	175W x 2	350W x 1	-	-
PN5.640D	5	60W x 4 + 200W x 1	80W x 4 + 350W x 1	160W x 2 + 350W x 1	-	Yes
PN4.1000D	4	140W x 4	250W x 4	500W x 2	-	-
PN1.1000D	1	350W x 1	600W x 1	1000W x 1 (1Ω)	-	Yes

Authorized Dealers Only
– Call your Sales-Rep for Details –
– Territory Restrictions –

Digital Bass Processors



BX-23Q

3-Band Bass Equalizer Enhances Dynamic Control of Subwoofer Response; 50Hz, 125Hz, 315Hz Dash Mount Remote Control w/ Subwoofer Level Control & Variable 35Hz-80Hz Subsonic Crossover Variable 27Hz-63Hz Frequency Sweep & Variable Center Frequency Q/Width 13V MAX



BX-20Z

• PWM Hi-Head Room Power Supply • Max. Bass Control • Bass Restoration Lighted Display • PFM Subsonic Filter & Bass Level Control • Balanced Inputs • Dash Mount Remote Control



BX-15

• PWM Hi-Head Room Power Supply • Max. Bass Control • Bass Restoration Lighted Display • PFM Subsonic Filter • Balanced Inputs • Bass Output Control • Dash Mount Remote Control



BX-12-Black

• Parametric EQ with Crossover and Sub Volume • 2 Selectable Inputs w/Variable Input Gain • F/R/ Subwoofer RCA Outputs • Variable Bass Boost & Subsonic Filter • Dash Mount Remote Control
BX-12W - as above in White



BX-10X

• PWM Hi-Head Room Power Supply • Max. Bass Control • Bass Restoration Lighted Display • PFM Subsonic Filter • Parametric Bass Control • Bass Output Control • Dash Mount Remote Control



BX-10-Black

• PWM Hi-Head Room Power Supply • Max. Bass Control • Bass Restoration Lighted Display • PFM Subsonic Filter • Parametric Bass Control • Bass Output Control • Dash Mount Remote Control
BX-10W - as above in White

Equalizers



MPQ-7B-Half DIN 7-Band Graphic EQ

• Graphic EQ with Subwoofer Level Control • Front Rear, and Subwoofer RCA Outputs • Selectable Low-Pass Filter • Two Selectable Balanced RCA Inputs with Input Gain



MPQ-7XO-Half DIN Dual Ch Parametric EQ

• Two Selectable Balanced RCA Inputs with Input Gain • Selectable Subsonic Filter • Variable Bass Boost • F/R/Subwoofer Outputs • Dual Channel Multi-Band Parametric Equalizer



MPQ-90

• 30V Bipolar Switching Power Supply • 20dB Headroom Eliminated Signal Overload • Selectable Stereo RCA Inputs, Main or AUX • Front, Rear, & Subwoofer RCA Outputs • Master Volume/Level Control • Independent Subwoofer Level Control • Independent Fade Control

Marine Stealth Full Range Amplifiers

• Hybrid Aluminum Alloy Heatsink • Mosfet Power Supply w/Audiophile Grade IRTM Transistors • Military Grade SMT PCB • Direct Short/Thermal & Overload Circuits Protect Amplifier • Variable High/Low Pass and Subsonic Crossovers • High/Low Level RCA Input • Quick Disconnect RCA/High Level Wire Harness



Model	Channels	4Ω RMS	2Ω RMS	Bridged 4Ω	Max Power	Remote Gain
SM4.1000D	4	90W x 4	125W x 4	250W x 2	1000W	-
ST4.1000DB	4	90W x 4	125W x 4	250W x 2	1000W	-
SM1.700D	1	250W x 1	350W x 1	-	700W	Yes

Authorized Dealers Only
- Call your Sales-Rep for Details -
- Territory Restrictions -

Rubicon Nano Full Range Amplifiers

- Hybrid Aluminum Alloy Heatsink • Mosfet Power Supply w/Audiophile Grade IRTM Transistors • Military Grade SMT PCB • Direct Short/Thermal & Overload Circuits Protect Amplifier • Variable High/Low Pass and Subsonic Crossovers
- High/Low Level RCA Input • Quick Disconnect RCA/High Level Wire Harness



Model	Channels	4Ω RMS	2Ω RMS	Bridged 4Ω	Max Power	Remote Gain
MR4.1400D	4	125W x 4	175W x 4	350W x 2	1400W	-
MR5.2000D	5	75W x 4 + 300W x 1	125W x 4 + 500W x 1	250W x 2 + 500W x 1	2000W	Yes
MR1.2000D	1	4000W x 1	600W x 1	1000W x 1(1Ω)	700W	Yes

Arachnid Series Speakers

Model	Size	Description	Max Power
AF.42	4"	2-way Coaxial Speaker	200W
AF.52	5.25"	2-way Coaxial Speaker	250W
AF.573	5"x7"	3-way Coaxial Speaker	350W
AF.653	6.5"	3-way Coaxial Speaker	300W
AF.694	6"x9"	4-way Coaxial Speaker	500W



Tweeters

TWS.1

- 1" Soft Dome Tweeter • Tri-Mounting: Flush/Surface and Surface Angle • Rated Input Power: 110 Watts • Impedance: 4 Ohm • 12dB/Octave Passive Crossover Included • Ferrofluid Cooled



TWS.4

- Tantalum 2-way Mount Tweeter • Polished Aluminum Housing • 12 dB In-Line Crossover Network • Rated Input Power: 110 Watts • Impedance: 4 Ohm



TWS.3N

- 1" PEI Dome Tweeter • Impedance: 4 Ohm • Adjustable Eyeball Design • 12 dB In-Line Crossover Network • Tri-Mounting: Flush/Surface/Surface Angle • Rated Input Power: 110 Watts



Authorized Dealers Only
– Call your Sales-Rep for Details –
– Territory Restrictions –

EVOX 2

400.2 EVOX2 - 4 Ω

Power @ 12.6V @ 2Ω: 2 X 200 WRMS
Power @ 12.6V @ 4Ω: 2 X 132 WRMS
Power @ 12.6V @ 1Ω: N/A
Bridge Power @ 12.6V @ 4Ω: 1 X 400 WRMS
Frequency Response: 5Hz – 22kHz



400.4 EVOX2 - 4 Ω

Power @ 12.6V @ 4Ω: 4 X 66 WRMS
Power @ 12.6V @ 2Ω: 4 X 100 WRMS
Power @ 12.6V @ 1Ω: N/A
Bridge Power @ 12.6V @ 4Ω: 2 X 200 WRMS
Bridge Power @ 12.6V @ 2Ω: N/A
Frequency Response: 5Hz – 22kHz

800.4 EVOX2 - 4 Ω

Power @ 12.6V @ 4Ω: 4 X 132 WRMS
Power @ 12.6V @ 2Ω: 4 X 200 WRMS
Power @ 12.6V @ 1Ω: N/A
Bridge Power @ 12.6V @ 4Ω: 2 X 400 WRMS
Bridge Power @ 12.6V @ 2Ω: N/A
Frequency Response: 5Hz – 22kHz



1200.2 EVOX2 - 2 Ω

Power @ 12.6V @ 4Ω: 2 X 261 WRMS
Power @ 12.6V @ 2Ω: 2 X 396 WRMS
Power @ 12.6V @ 1Ω: 2 X 600 WRMS
Bridge Power @ 12.6V @ 4Ω: 1 X 792 WRMS
Bridge Power @ 12.6V @ 2Ω: 1 X 1200 WRMS
Frequency Response: 5Hz – 22kHz



1200.2 EVOX2 - 4 Ω

Power @ 12.6V @ 4Ω: 2 X 396 WRMS
Power @ 12.6V @ 2Ω: 2 X 600 WRMS
Power @ 12.6V @ 1Ω: N/A
Bridge Power @ 12.6V @ 4Ω: 1 X 1200 WRMS
Bridge Power @ 12.6V @ 2Ω: N/A
Frequency Response: 5Hz – 22kHz

1200.4 EVOX2 - 2 Ω

Power @ 12.6V @ 4Ω: 4 X 130 WRMS
Power @ 12.6V @ 2Ω: 4 X 198 WRMS
Power @ 12.6V @ 1Ω: 4 X 300 WRMS
Bridge Power @ 12.6V @ 4Ω: 2 X 396 WRMS
Bridge Power @ 12.6V @ 2Ω: 2 X 600 WRMS
Frequency Response: 5Hz – 22kHz



1200.4 EVOX2 - 4 Ω

Power @ 12.6V @ 4Ω: 4 X 198 WRMS
Power @ 12.6V @ 2Ω: 4 X 300 WRMS
Power @ 12.6V @ 1Ω: N/A
Bridge Power @ 12.6V @ 4Ω: 2 X 600 WRMS
Bridge Power @ 12.6V @ 2Ω: N/A
Frequency Response: 5Hz – 22kHz

1600.1 EVOX2 - 1 Ω

Power @ 4Ω: 1 X 697 WRMS
Power @ 2Ω: 1 X 1056 WRMS
Power @ 1Ω: 1 X 1600 WRMS
Frequency Response: 5Hz – 25kHz



1600.1 EVOX2 - 2 Ω

Power @ 4Ω: 1 X 1056 WRMS
Power @ 2Ω: 1 X 1600 WRMS
Power @ 1Ω: N/A
Frequency Response: 5Hz – 25kHz

2400.4 EVOX2 - 2 Ω

Power @ 12.6V @ 4Ω: 4 X 261 WRMS
Power @ 12.6V @ 2Ω: 4 X 396 WRMS
Power @ 12.6V @ 1Ω: 4 X 600 WRMS
Bridge Power @ 12.6V @ 4Ω: 2 X 792 WRMS
Bridge Power @ 12.6V @ 2Ω: 2 X 1200 WRMS
Frequency Response: 5Hz – 22kHz



2400.4 EVOX2 - 4 Ω

Power @ 12.6V @ 4Ω: 4 X 396 WRMS
Power @ 12.6V @ 2Ω: 4 X 600 WRMS
Power @ 12.6V @ 1Ω: N/A
Bridge Power @ 12.6V @ 4Ω: 2 X 1200 WRMS
Bridge Power @ 12.6V @ 2Ω: N/A
Frequency Response: 5Hz – 22kHz

3000.1 EVOX2 - 1 Ω

Power @ 12.6V @ 4Ω: 1 X 1307 WRMS
Power @ 12.6V @ 2Ω: 1 X 1980 WRMS
Power @ 12.6V @ 1Ω: 1 X 3000 WRMS
Frequency Response: 5Hz – 25kHz



3000.1 EVOX2 - 2 Ω

Power @ 12.6V @ 4Ω: 1 X 1980 WRMS
Power @ 12.6V @ 2Ω: 1 X 3000 WRMS
Power @ 12.6V @ 1Ω: N/A
Frequency Response: 5Hz – 25kHz

5000.1 EVOX2 - 1 Ω

Power @ 12.6V @ 4Ω: 1 X 2178 WRMS
Power @ 12.6V @ 2Ω: 1 X 3300 WRMS
Power @ 12.6V @ 1Ω: 1 X 5000 WRMS
Frequency Response: 5Hz – 6kHz



5000.1 EVOX2 - 2 Ω

Power @ 12.6V @ 4Ω: 1 X 3300 WRMS
Power @ 12.6V @ 2Ω: 1 X 5000 WRMS
Power @ 12.6V @ 1Ω: N/A
Frequency Response: 5Hz – 6kHz

8000.1 EVOX2 - 1 Ω

Power @ 12.6V @ 4Ω: 1 X 3485 WRMS
Power @ 12.6V @ 2Ω: 1 X 5280 WRMS
Power @ 12.6V @ 1Ω: 1 X 8000 WRMS
Frequency Response: 5Hz – 6kHz



8000.1 EVOX2 - 2 Ω

Power @ 12.6V @ 4Ω: 1 X 5280 WRMS
Power @ 12.6V @ 2Ω: 1 X 8000 WRMS
Power @ 12.6V @ 1Ω: N/A
Frequency Response: 5Hz – 6kHz

12000.1 EVOX2 - 1 Ω

Power @ 12.6V @ 4Ω: 1 X 5227 WRMS
Power @ 12.6V @ 2Ω: 1 X 7920 WRMS
Power @ 12.6V @ 1Ω: 1 X 12000 WRMS
Frequency Response: 5Hz – 500 Hz



12000.1 EVOX2 - 2 Ω

Power @ 12.6V @ 4Ω: 1 X 7920 WRMS
Power @ 12.6V @ 2Ω: 1 X 12000 WRMS
Power @ 12.6V @ 1Ω: N/A
Frequency Response: 5Hz – 500 Hz



20000.1 EVOX2 - 1 Ω

Power @ 12.6V @ 4Ω: 1 X 8712 WRMS
Power @ 12.6V @ 2Ω: 1 X 13200 WRMS
Power @ 12.6V @ 1Ω: 1 X 20000 WRMS
Frequency Response: 5Hz – 500 Hz

35000.1 EVOX2 - 1 Ω

Power @ 12.6V @ 4Ω: 1 X 15246 WRMS
Power @ 12.6V @ 2Ω: 1 X 23100 WRMS
Power @ 12.6V @ 1Ω: 1 X 35000 WRMS
Frequency Response: 5Hz – 500 Hz
To be used only in SPL Competitions (Burr Only)!

SD RLC

Remote Level Control / Bass Knob
Compatible with: 3000.1/5000.1/8000.1/
12000.1/20000.1 and 35000.1 EVOX



EVOPS

800.1 EVOPS - 2 Ω

Power @ 12.6V @ 4 Ω : 1 X 528 WRMS
 Power @ 12.6V @ 2 Ω : 1 X 800 WRMS
 Power @ 12.6V @ 1 Ω : N/A
 Frequency Response: 5Hz – 500 Hz

800.1 EVOPS - 4 Ω

Power @ 12.6V @ 4 Ω : 1 X 800 WRMS
 Power @ 12.6V @ 2 Ω : N/A
 Power @ 12.6V @ 1 Ω : N/A
 Frequency Response: 5Hz – 500 Hz

800.4 EVOPS - 4 Ω

Power @ 12.6V @ 4 Ω : 4 X 132 WRMS
 Power @ 12.6V @ 2 Ω : 4 X 200 WRMS
 Power @ 12.6V @ 1 Ω : N/A
 Bridge Power @ 12.6V @ 4 Ω : 2 X 400 WRMS
 Bridge Power @ 12.6V @ 2 Ω : N/A
 Frequency Response: 5Hz – 22kHz

1200.4 EVOPS - 2 Ω

Power @ 12.6V @ 4 Ω : 4 X 130 WRMS
 Power @ 12.6V @ 2 Ω : 4 X 198 WRMS
 Power @ 12.6V @ 1 Ω : 4 X 300 WRMS
 Bridge Power @ 12.6V @ 4 Ω : 2 X 396 WRMS
 Bridge Power @ 12.6V @ 2 Ω : 2 X 600 WRMS
 Frequency Response: 5Hz – 22kHz

1200.4 EVOPS - 4 Ω

Power @ 12.6V @ 4 Ω : 4 X 198 WRMS
 Power @ 12.6V @ 2 Ω : 4 X 300 WRMS
 Power @ 12.6V @ 1 Ω : N/A
 Bridge Power @ 12.6V @ 4 Ω : 2 X 600 WRMS
 Bridge Power @ 12.6V @ 2 Ω : N/A
 Frequency Response: 5Hz – 22kHz

2000.4 EVOPS - 2 Ω

Power @ 12.6V @ 4 Ω : 4 X 217 WRMS
 Power @ 12.6V @ 2 Ω : 4 X 330 WRMS
 Power @ 12.6V @ 1 Ω : 4 X 500 WRMS
 Bridge Power @ 12.6V @ 4 Ω : 2 X 660 WRMS
 Bridge Power @ 12.6V @ 2 Ω : 2 X 1000 WRMS
 Frequency Response: 5Hz – 22kHz

2000.4 EVOPS - 4 Ω

Power @ 12.6V @ 4 Ω : 4 X 330 WRMS
 Power @ 12.6V @ 2 Ω : 4 X 500 WRMS
 Power @ 12.6V @ 1 Ω : N/A
 Bridge Power @ 12.6V @ 4 Ω : 2 X 1000 WRMS
 Bridge Power @ 12.6V @ 2 Ω : N/A
 Frequency Response: 5Hz – 22kHz



LOUDSPEAKERS

MR BULLET SERIES

MODEL	SIZE	IMPEDANCE	APPLICATION	RMS/MAX POWER	SENSITIVITY	FREQ. RESPONSE
TPT-MR6-4 BULLET	6.5"	4Ω	MIDRANGE	150W / 500W	94 dB	160 - 9,500 Hz
TPT-MR8-4 BULLET	8"	4Ω	MIDRANGE	200W / 600W	95 dB	125 - 9,500 Hz



SLIM SERIES

MODEL	SIZE	IMPEDANCE	APPLICATION	RMS/MAX POWER	SENSITIVITY	FREQ. RESPONSE
TPT-MR6-4 PRO	6.5"	4Ω	MIDRANGE	150W / 500W	94 dB	160 - 9,500 Hz
TPT-MB6-4 SLIM	6.5"	4Ω	MIDBASS	200W / 600W	94 dB	95 - 7,600 Hz
TPT-MB8-4 SLIM	8"	4Ω	MIDBASS	230W / 700W	95 dB	90 - 7,200 Hz



M SERIES (SOLD IN PAIRS) - OEM REPLACEMENT CAR SPEAKER

MODEL	SIZE	IMPEDANCE	APPLICATION	RMS/MAX POWER	SENSITIVITY	FREQ. RESPONSE
TPT-M6-4	6.5"	4Ω	MIDRANGE	140W / 400W (Pair)	94 dB	110 - 8,500 Hz
TPT-M6-8	6.5"	8Ω	MIDRANGE	140W / 400W (Pair)	94 dB	110 - 8,500 Hz



COMPETITION SERIES

MODEL	SIZE	IMPEDANCE	APPLICATION	RMS/MAX POWER	SENSITIVITY	FREQ. RESPONSE
TPT-MB12 2K5	12"	8Ω	MIDBASS	1250W / 2500W	98 dB	60 - 5,500 Hz



MD SERIES

MODEL	SIZE	IMPEDANCE	APPLICATION	RMS/MAX POWER	SENSITIVITY	FREQ. RESPONSE	REPLACEMENT CONE KIT
TPT-MD6-8	6.5"	8Ω	MIDRANGE	200W / 600W	95 dB	145 - 9,000 Hz	---
TPT-MD8-8	8"	8Ω	MIDRANGE	230W / 700W	95 dB	110 - 8,500 Hz	---
TPT-MD10 v2	10"	8Ω	MIDBASS	325W / 650W	97 dB	75 - 5,500 Hz	TPT-RPMD10 v2
TPT-MD10 PRO	10"	8Ω	MIDRANGE	400W / 1000W	100 dB	80 - 4,000 Hz	TPT-RPMD10 PRO
TPT-MD12	12"	8Ω	MIDBASS	375W / 750W	97 dB	55 - 5,000 Hz	TPT-RPMD12
TPT-MD12 PRO	12"	8Ω	MIDRANGE	400W / 800W	101 dB	55 - 3,000 Hz	TPT-RPMD12 PRO

TWEETERS



MODEL	RMS/MAX POWER	SENSITIVITY	FREQ. RESPONSE	REPLACEMENT DIAPHRAGM
TPT-ST1 (PAIR)	35W / 150W (Pair)	100 dB	5,000 - 20,000 Hz	---
TPT-ST2 CHROME (PAIR)	240W / 500W (Pair)	105 dB	2,000 - 23,000 Hz	---
TPT-ST2 BLACK (PAIR)	240W / 500W (Pair)	105 dB	2,000 - 23,000 Hz	---
TPT-ST3 BLACK (PAIR)	120W / 500W (Pair)	105 dB	2,000 - 22,000 Hz	TPT-RPTST3
TPT-ST25 CHROME (PAIR)	300W / 900W (Pair)	109 dB	3,500 - 20,000 Hz	TPT-RPST25
TPT-ST25 BLACK (PAIR)	300W / 900W (Pair)	109 dB	3,500 - 20,000 Hz	TPT-RPST25
TPT-ST71 CHROME (PAIR)	300W / 900W (Pair)	108 dB	4,000 - 20,000 Hz	TPT-RPST71

**FOLLOW TIMPANO ON SOCIAL MEDIA
FOR EXCLUSIVE GIVEAWAYS!**



#TimpanoAudio

FOR FULL SPECS ON TIMPANO PRODUCTS, PLEASE VISIT - WWW.TIMPANOAUDIO.COM



LOUDSPEAKERS



MARINE SPEAKERS

MODEL	SIZE	IMPEDANCE	APPLICATION	RMS/MAX POWER	SENSITIVITY	FREQ. RESPONSE	REPLACEMENT KIT
TPT-CX6MW-4	6.5"	4Ω	COAXIAL	160W / 450W (Pair)	89 dB	55 - 20,000 Hz	TPT-RPCX6MW-4 TWEETER
TPT-CX8MW-4	8"	4Ω	COAXIAL	250W / 600W (Pair)	90.5 dB	40 - 20,000 Hz	TPT-RPCX8MW-4 TWEETER

COMPRESSION DRIVERS



1" EXIT COMPRESSION DRIVERS

MODEL	VOICE COIL	IMPEDANCE	POWER	SENSITIVITY	FREQ. RESPONSE	REPLACEMENT DIAPHRAGM
TPT-D250X	2"	8Ω	75W / 150W	107 dB	400 - 8,000 Hz	TPT-RPD250X
TPT-DH100	1"	8Ω	100W / 200W	106 dB	1,500 - 18,000 Hz	---
TPT-DH150	1"	8Ω	75W / 150W	104 dB	1,500 - 18,000 Hz	TPT-RPDH150
TPT-DH175	1"	8Ω	75W / 150W	108 dB	1,300 - 19,000 Hz	TPT-RPDH175
TPT-DH175 SLIM	1"	8Ω	75W / 150W	108 dB	1,300 - 19,000 Hz	TPT-RPDH175



2" EXIT COMPRESSION DRIVERS

MODEL	VOICE COIL	IMPEDANCE	POWER	SENSITIVITY	FREQ. RESPONSE	REPLACEMENT DIAPHRAGM
TPT-DH2000	2"	8Ω	150W / 450W	109 dB	1,000 - 20,000 Hz	TPT-RPDH2000
TPT-DH2000 PRO	2"	8Ω	150W / 450W	110 dB	1,000 - 20,000 Hz	TPT-RPDH2000
TPT-D3200Ti-ND	3"	8Ω	100W / 200W	110 dB	1,600 - 19,000 Hz	TPT-RPD3200Ti-ND
TPT-D3000	3"	8Ω	100W / 200W	108 dB	1,500 - 15,000 Hz	TPT-RPD3000
TPT-D5000ND	3.5"	16/16 = 8Ω	2x 225W / 2x 500W	123 dB	400 - 9,000 Hz	TPT-RPD5000ND

HORNS - DESIGNED FOR CAR DOOR INSTALLATION

TPT-HL11-25

1" Exit Screw-On Horn
Size: 4.52" x 4.52" x 2.95"



TPT-HL14-50 SLIM

2" Exit Bolt-On Horn
Size: 6.10" x 6.10" x 2.95"



RCA CABLE



MODEL	TPT-RCA2F1M	TPT-RCA1F2M	TPT-RCA3FT	TPT-RCA10FT	TPT-RCA20FT
CABLE LENGTH	6"	6"	3'	10'	20'
TYPE	Package of 10 2 Female to 1 Male Y RCA Audio Signal Cable 6" Long	Package of 10 1 Female to 2 Male Y RCA Audio Signal Cable 6" Long	Package of 10 2 Channel RCA Audio Signal Cable 3 FT Long	Package of 10 2 Channel RCA Audio Signal Cable 10 FT Long	Package of 10 2 Channel RCA Audio Signal Cable 20 FT Long

FOR FULL SPECS ON TIMPANO PRODUCTS, PLEASE VISIT - WWW.TIMPANOAUDIO.COM

SUBWOOFERS



T1000
SERIES

1000 WATTS ENTRY LEVEL
SUBWOOFER
PERFECT CHOICE FOR THE
BASSHEAD ON A BUDGET



T1500
SERIES

UNBEATABLE 1500 WATTS
BASS MACHINE SUBS
THE DAILY BANGERS

	TPT-T1000-10 D4	TPT-T1000-12 D4
Size	10"	12"
Max Power	1000 Watts	1200 Watts
RMS Power	500 Watts	600 Watts
Impedance	Dual 4 Ohms	Dual 4 Ohms
Xmax	14 mm	14 mm
Voice Coil	2.4"	2.4"

	TPT-T1500-10 D4	TPT-T1500-12 D4	TPT-T1500-15 D4
Size	10"	12"	15"
Max Power	1500 Watts	1600 Watts	1600 Watts
RMS Power	750 Watts	800 Watts	800 Watts
Impedance	Dual 4 Ohms	Dual 4 Ohms	Dual 4 Ohms
Xmax	16 mm	16 mm	16 mm
Voice Coil	2.6"	2.6"	2.6"

T2500
SERIES



1500 WATTS - AMERICAN MADE VOICE COILS
COMPETITION GRADE SERIES WITH HIGH EXCURSION

	TPT-T2500-10 D2	TPT-T2500-12 D2	TPT-T2500-12 D4	TPT-T2500-15 D4
Size	10"	12"	12"	15"
Max Power	2000 Watts	2500 Watts	2500 Watts	2500 Watts
RMS Power	1000 Watts	1250 Watts	1250 Watts	1250 Watts
Impedance	Dual 2 Ohms	Dual 2 Ohms	Dual 4 Ohms	Dual 4 Ohms
Xmax	23.5 mm	23.5 mm	23.5 mm	23.5 mm
Voice Coil	3"	3"	3"	3"

T3500
SERIES



3500 WATTS - AMERICAN MADE VOICE COILS
EXPERIENCE THE ULTIMATE SOUND PRESSURE

	TPT-T3500-12 D2	TPT-T3500-15 D2
Size	12"	15"
Max Power	3500 Watts	3500 Watts
RMS Power	1750 Watts	1750 Watts
Impedance	Dual 2 Ohms	Dual 2 Ohms
Xmax	29 mm	29 mm
Voice Coil	3"	3"



USA VOICE COIL



LOADED SUBWOOFER BOXES



	TPT-T2500-1x10 D2	TPT-T2500-1x12 D2	TPT-T2500-2x12 D4
Included Sub	1x TPT-T2500-10 D2	1x TPT-T2500-12 D2	2x TPT-T2500-12 D4
Box Style	Slanted Single 10" Ported	Slanted Single 12" Ported	Slanted Dual 12" Ported
Overall Size	14" H x 20.25" W x 16" D	15.25" H x 21" W x 16.75" D	15.25" H x 37.75" W x 16.75" D
Max Power	2000 Watts	2500 Watts	5000 Watts
RMS Power	1000 Watts	1250 Watts	2500 Watts
Final Impedance	1 Ohm	1 Ohm	1 Ohm

AMPLIFIERS



Channels
 RMS Power at 1 Ohm 12.6V:
 RMS Power at 2 Ohms 12.6V:
 RMS Power at 4 Ohms 12.6V:
 RMS Power at 8 Ohms 12.6V:
 RMS Power at 1 Ohm 14.4V:
 RMS Power at 2 Ohms 14.4V:
 RMS Power at 4 Ohms 14.4V:
 RMS Power at 8 Ohms 14.4V:
Supply Voltage:
Frequency Response:
Crossover Low Pass:
Crossover High Pass:
Dimensions (W x D x H):
Weight:

TPT-BASS3000 1Ω	TPT-BASS5000 1Ω	TPT-500 2Ω	TPT-500.4 2Ω	TPT-1000.4 2Ω	TPT-1500 1Ω	TPT-1500 2Ω	TPT-1500 4Ω
1	1	1	4	4	1	1	1
---	---	380W	4x 100W	4x 225W	1,250W	---	---
---	---	150W	4x 50W	4x 140W	750W	1,240W	1,200W
---	---	---	---	---	---	700W	700W
3,000W	5,200W	---	---	---	1,800W	---	---
1,800W	2,900W	460W	4x 115W	4x 260W	1,050W	1,600W	---
---	---	260W	4x 55W	4x 165W	---	900W	1,600W
---	---	---	---	---	---	---	900W
9 - 17Vdc	9 - 17Vdc	10 - 15Vdc	10 - 15Vdc	11 - 16Vdc	9 - 15 Vdc		
8 Hz - 600 KHz	5 Hz - 600 KHz	10 Hz - 22,000 Hz	10 Hz - 24,000 Hz	20 Hz - 26,000 Hz	10 Hz - 15,000 Hz		
8 Hz - 250 KHz	30 Hz - 250 KHz	60 Hz - 22,000 Hz	60 Hz - 22,000 Hz	Fixed at 90 + 45 Hz	90 Hz - 15,000 Hz		
---	---	10 Hz - 700 Hz	Fixed at 90 Hz	Fixed at 90 Hz	10 Hz - 90 Hz		
9.03" x 9.36" x 3.05"	12.85" x 9.36" x 3.05"	5.02" x 3.93" x 2"	5.02" x 3.93" x 2"	6.11" x 8.11" x 2.6"	5.53" x 9.36" x 3.05"		
6.14 Lbs	8.87 Lbs	1.12 Lbs	1.12 Lbs	3.75 Lbs	3.62 Lbs		



Channels
 RMS Power at 1 Ohm 12.6V:
 RMS Power at 2 Ohms 12.6V:
 RMS Power at 4 Ohms 12.6V:
 RMS Power at 1 Ohm 14.4V:
 RMS Power at 2 Ohms 14.4V:
 RMS Power at 4 Ohms 14.4V:
Supply Voltage:
Frequency Response:
Crossover Low Pass:
Crossover High Pass:
Dimensions (W x D x H):
Weight:

TPT-2200 1Ω	TPT-2200 2Ω	TPT-3000 1Ω	TPT-3000 2Ω	TPT-5000EQ 1Ω	TPT-5000EQ 2Ω	TPT-8000EQ 1Ω	TPT-8000EQ 2Ω
1	1	1	1	1	1	1	1
2,015W	---	3,000W	---	5,000W	---	8,000W	---
1,330W	2,115W	2,000W	3,000W	2,800W	5,000W	5,100W	8,000W
---	1,140W	---	2,000W	---	3,050W	3,030W	5,000W
2,600W	---	3,350W	---	5,600W	---	8,900W	---
1,720W	2,750W	2,100W	3,700W	3,400W	5,500W	6,000W	8,950W
---	1,600W	---	2,500W	---	3,550W	4,000W	6,050W
9 - 16 Vdc		9 - 16 Vdc		9.5 - 15 Vdc		9.5 - 15 Vdc	
10 Hz - 22,000 Hz		10 Hz - 20,000 Hz		10 Hz - 15,000 Hz		10 Hz - 15,000 Hz	
90 Hz - 22,000 Hz		90 Hz - 20,000 Hz		50 Hz - 15,000 Hz		50 Hz - 15,000 Hz	
10 Hz - 90 Hz		10 Hz - 700 Hz		10 Hz - 700 Hz		10 Hz - 700 Hz	
7.46" x 9.36" x 3.05"		7.46" x 9.36" x 3.05"		12.20" x 11.57" x 3"		17.51" x 11.57" x 3"	
4.65 Lbs 4.63 Lbs		4.81 Lbs 3.54 Lbs		9.0 Lbs		13.9 Lbs	



Channels
 RMS Power at 1 Ohm 12.6V:
 RMS Power at 2 Ohms 12.6V:
 RMS Power at 4 Ohms 12.6V:
 RMS Power at 1 Ohm 14.4V:
 RMS Power at 2 Ohms 14.4V:
 RMS Power at 4 Ohms 14.4V:
Supply Voltage:
Frequency Response:
Crossover Low Pass:
Crossover High Pass:
Dimensions (W x D x H):
Weight:

TPT-10500EQ 1Ω	TPT-10500EQ 2Ω
1	1
10,500W	---
6,400W	10,500W
3,900W	6,200W
11,600W	---
7,300W	11,600W
4,800W	7,500W
9.5 - 15 Vdc	
10 Hz - 15,000 Hz	
50 Hz - 15,000 Hz	
10 Hz - 700 Hz	
20" x 11.57" x 3"	
16.5 Lbs	

DIGITAL SIGNAL PROCESSOR (DSP)

CONTROL ON YOUR PHONE



AVAILABLE FOR IOS AND ANDROID DEVICES



Signal Processor 4 Channel Bluetooth DSP
 Dimensions (H x W x L):
 1.3" x 3.8" x 7.4"

TPT-SP4BT

4-Channel DSP Controlled by a Wireless BT Connection
 2 Channel Input or Hi-Level Input
 4 Channel Output
 Built-In Voltmeter
 Built-In Relay (Sequencer)

CROSSOVERS & EQUALIZERS



TPT-360

3-way Electronic Crossover
 2/4/6 Channel Input
 6-Channel / 5 Volt RCA Outputs (Front/Rear/Subwoofer)
 Front/Rear/Subwoofer Level Control
 Subwoofer Equalizer and Boost Level Control
 High-Pass Crossover Frequency Multiplier
 Remote Subwoofer Level Control
 Gold Plated Terminals



TPT-EQ7

7 Band Graphic Equalizer
 1/2 - DiN Graphic Equalizer / Crossover
 6-Channel / 8-Volt RCA Line-Level Output
 2 Selectable Inputs
 Subwoofer-Level Control
 Front 3.5 mm Aux Input

FOR FULL SPECS ON TIMPANO PRODUCTS, PLEASE VISIT - WWW.TIMPANOAUDIO.COM

G3 SERIES

DJ BUTTON Broadcast up to 100 friends.



- BPB24-G3** 24" 3rd Generation Single Sided Party Bar
- BPB24-DS-G3** 24" 3rd Generation Double Sided Party Bar
- BPB36-G3** 36" 3rd Generation Single Sided Party Bar

The new Bazooka G3 Party Bar & LED Illumination Systems are the ultimate off-road and outdoor entertainment system. Featuring a "Party" button, everyone can now join the PARTY. Simply choose who is gonna "DJ" and who is gonna "Listen" and get the "Party" The DJ will have full control over the music and LED lights for everyone who has joined the Party! The G3 Party Bars also include the same Class D, 450-watt max power amplifier, marine-grade speakers (including end-loaded woofers), LED light system and USB charging with thumb drive music playback as their G2 predecessors. And, there is a new full featured G3 Mobile App for both iOS and Android.

G2 SERIES BLUETOOTH PARTY BAR



BPB24-G2

- BPB24-G2** 24" 2nd Generation Single Sided Party Bar
- BPB24-DS-G2** 24" 2nd Generation Double Sided Party Bar
- BPB36-G2** 36" 2nd Generation Single Sided Party Bar

- 8 true marine-grade speakers with end-loaded woofers and front firing tweeters
- 450-watt peak power Class D integrated amplifier with easy pair integrated Bluetooth and auto connect. Audio sync connects two Party Bars to one mobile device
- Waterproof 3.5mm auxiliary inputs allow you to connect any smart device or mp3 player with a 3.5mm audio jack



- Adapts to 110V to expand the use of the sound bars

"TUBBIES"

Hot Item for Ski, Wakeboard, Sport Boats, ATV



- MT8100B** pair – Black
 - MT8265W** pair – Double Ended Tubbie 8" +6.5" (White)
- Call your Sales-rep for Required Mounting Brackets

Bass Tube Dual Voice Coil

- Spring Loaded Terminal Cups • Foam Edge Roll • 1 Year Warranty

Model	Description	Power
BT6024DVC - each	6" 4 Ohm DVC	200 Watts
BT8024DVC - each	8" 4 Ohm DVC	200 Watts
BT1024DVC - each	10" 4 Ohm DVC	200 Watts
BT1224DVC - each	12" 4 Ohm DVC	200 Watts
BT6028DVC - each	8 Ohm DVC	200 Watts



Class D High Power Amplified Bass Tubes

- Fixed 85Hz Crossover • ABS Plastic Amplifier Cover • Built-In Subsonic Filter • 1 Year Warranty

Model	Description	Power
BTA6250D - each	6" Class D	250 Watts
BTA8250D - each	8" Class D	250 Watts
BTA10250D - each	10" Class D	250 Watts



Amplified Bass Tubes

- Fixed 85Hz Crossover • ABS Plastic Amplifier Cover • Built-In Subsonic Filter • 1 Year Warranty

Model	Description	Power
BTA6100 - each	6"	100 Watts
BTA8100 - each	8"	100 Watts
BTA10100 - each	10"	100 Watts



Bass Tube Passive

- Spring Loaded Terminal Cups • Foam Edge Roll • 1 Year Warranty

Model	Description	Power
BT6014 - each	6" 4 Ohm	100 Watts
BT8014 - each	8" 4 Ohm	100 Watts
BT1014 - each	10" 4 Ohm	100 Watts
BT1214 - each	12" 4 Ohm	100 Watts



Marine Subwoofer Tubes

Model	Description
MBT8014 - each	8" 4 Ohm 150 Watt
MBT1014 - each	10" 4 Ohm 200 Watt
MBTA8100 - each	8" 1 x 100 Watt Amplified
MBTA10100 - each	10" 1 x 100 Watt Amplified
MBTA8250D - each	8" 1 x 250 Watt Mosfet Amplified
MBTA10250D - each	10" 1 x 250 Watt Mosfet Amplified



INTERNET SALES MUST BE PRE-APPROVED

Powersport Speakers

- Composite Speaker Baskets • Poly-Mica Woofer Cones • Aluminum Dome Tweeters • UV Resistant White Grills • Polyurethane Rubber Woofer Surrounds

Model	Description	Power
MAC6510W - pair	6.5" 2-Way Coaxial, (White Enclosure)	100 Watts
MAC6510B - pair	6.5" 2-Way Coaxial, (Black Enclosure)	100 Watts
MAC8100W - pair	8" 2-Way Coaxial, (White Enclosure)	150 Watts
MAC8100B - pair	8" 2-Way Coaxial, (Black Enclosure)	150 Watts



— Territory Restrictions —

10.5 IN SINGLE-DIN FLOATING DISPLAY MECHLESS DIGITAL MEDIA RECEIVER

DDX10.5AD

- 10.5" (Wide 16:9) Full HD (1280x720 pixels) Single-Din touchscreen to maximize your viewing and allow perfect fit modular mounting.
- Android 10 System with 4+64 GB of memory
- Full 14 Band EQ and Subwoofer LPF
- Built in , Aux, SD Reader (64GB), 1.5a USB charging, AUX Input, AM/FM Tuner, and USB connections 3 (1 front and 2 rear)
- HDMI Outputs for full size monitor use
- Wireless remote control for easy operation.
- RCA inputs so you can view external sources video easily via source.
- Multi Colored Backlit Keys for easy use in dim settings
- MIC in options for easy phone operation and built in controls.
- Camera (front/rear) Inputs included so you can plug and play most types of back up cameras.
- Mech-Less
- Apple and Android compatible with mirror link.
- BT Mic included.
- Built in Navigation and antenna.
- 6v 8 channel Pre output.
- Steering Wheel controls compatible with most vehicles.



6.9 IN TOUCHSCREEN MECHLESS DOUBLE-DIN DIGITAL MEDIA RECEIVER

DDX6.9CP

- 6.9-inch (16:9) 1080p (1024x600 pixels) double din touchscreen to maximize your viewing in a small space.
- Full 10 Band EQ
- 4v preamp outputs (SUB / FRONT / REAR)
- Built in Apple Car Play, Mirror Link, Wi-Fi, Aux, SD Reader (64GB), 1.5a USB charging, AUX Input, AM/FM Tuner, and USB connections (1 front and 2 rear)
- Wireless remote control for easy operation.
- RCA inputs so you can view external sources video easily via source.
- MIC in options for easy phone operation and built in controls.
- APP control with the DS18 DDXRC app easily found on Google Play or the Apple store.
- Camera Inputs included so you can plug and play most types of back up cameras.
- Apple and Android compatible.



SINGLE DIN DIGITAL MEDIA RECEIVER MECHLESS PLAYER

SDX1

- Mech-less Single Din USB/BT Receiver
- Single Din Perfect Fit Mounting
- FM Radio: 18 Memory Locations
- Source: USB, SD, BT Reader / Streamer
- Supported Media Files: MP3, WMA, FLAC, MAV
- Remote control: Infrared
- RGB: 7 Selectable Colors
- Display: 3" VA White Backlit
- Power: 50 x 4 Watts Max
- Equalizer: 2 Bands with Adjustable Bass, Treble, and Subwoofer
- Pre-amp output: 7v
- Inputs: USB, SD, BT, Front AUX



MARINE AND POWERSPORTS WATERPROOF UNIVERSAL BLUETOOTH STREAMING DIGITAL MEDIA RECEIVER

BTRC-SQ

- Easily mountable without taking up a lot of space.
- Multiple outputs to make it connectable to most amplifiers and devices
- BT connectivity to your phone or tablet for stress free streaming or music playback.
- AUX input and USB slot is provided.
- 1A charging to keep your device charged while streaming if connected via USB.



RGB LED LIGHT BLUETOOTH CONTROL

LED-BTC

- BT 4.0 (Faster speed & longer range)
- iOS - Connect up to 7 controllers
- Android - Connect up to 4 controllers
- 5 amps of lighting
- Waterproof IP65 rated
- 12 volt applications



SXE SERIES AMPLIFIERS

DS18's SXE Amplifier Series was designed for enthusiasts looking for an extreme increase to the quality of audio reproduced by their vehicle. The SXE Series offers you the ability to shape your systems audio to match your personal preferences. Its fully variable crossover, adjustable gain input sensitivity, and multi-channel amplifier design allows you to fine-tune your audio, ensuring every beat, melody, and lyric is reproduced with astonishing accuracy. The compact size of the SXE Series enables easy installation anywhere in your vehicle, making it a versatile companion for your custom audio setup. Immerse yourself in a customized soundstage that complements your unique style.



Item Number	Class	Channels	4 OHM Power	2 OHM Power	1 OHM Power	Color	Dimensions L x W x H
SXE-1200.4/BK SXE-1200.4/RD	AB	4	4 x 60W	4 x 100W	1200W	Black	9.81 x 5.51 x 1.88
						Red	
SXE-2500.1D/BK	D	1	300W	600W	800W	Black	9.75 x 7.75 x 3.25
SXE-3000.4D/BK SXE-3000.4D/RD	D	4	200W x 4	320W x 4	N/A	Black	11.75 x 7.75 x 3.25
						Red	
SXE-4000.4D/BK SXE-4000.4D/RD	D	4	430W x 4	275W x 4	N/A	Black	12.5 x 7.75 x 3.25
						Red	

X SERIES AMPLIFIERS

Small and compact amp putting out amazing power for its size. Perfect for vehicles with very little to no room to mount large amplifiers. Perfect for motorcycles looking to put an amp or two in their Ferring. Great For: Motorcycle Audio, Pro Audio, Car Audio, Marine Audio, Powersports Audio, Jeep Audio



Item Number	Class	Channels	4 OHM Power	2 OHM Power	1 OHM Power	Color	Dimensions LxWxH
X4	D	4	220W x 2	70W x 4	140W x 4	Black	6.5 x 3.75 x 2
X1	D	1	140W	220W	300W	Black	6.25 x 5.5 x 2

CLASS D 4-CHANNEL STEREO FULL RANGE CAR AUDIO AMPLIFIER

ZR800.4D

• Digital Class D Full Range Amp • MAX Wattage: 3600 Watts Peak • RMS Wattage: 2 x 600 Watts RMS @ 4-Ohms Bridge, 4 x 320 Watts RMS @ 2-Ohms, 4 x 200 • Watts RMS @ 4-Ohms • Frequency Response: 20Hz – 20KHz • Signal to Noise Ratio: >90dB • Efficiency at 4-Ohms: 88% • Total Harmonic Distortion: 1% • Input Range: 0.2v - 6v • Selectable X-Over: FULL/LPF/HPF • LED Indicator: Clipping, Power, Protect • Power and Ground Terminal: 4 Ga • Minimum Impedance: 2 Ohms (Stereo) / 4 Ohms (Bridge)





CO-AXIAL SPEAKERS WITH KEVLAR CONES

ZXI-694	DS18 PR 6x9IN 2-Way Coaxial Speakers with Kevlar Cone 360 Watts 4-Ohm
ZXI-654	DS18 PR ZXI 6.5IN 2-Way Coaxial Speakers with Kevlar Cone 240 Watts 4-Ohm
ZXI-574	DS18 PR ZXI 5x7IN 2-Way Coaxial Speakers with Kevlar Cone 210 Watts 4-Ohm
ZXI-5254	DS18 PR ZXI 5.25IN 2-Way Coaxial Speakers with Kevlar Cone 180 Watts 4-Ohm
ZXI-44	DS18 PR ZXI 4IN 2-Way Coaxial Speakers with Kevlar Cone 150 Watts 4-Ohm
ZXI-354	DS18 PR ZXI 3.5IN Full-Range Speakers with Kevlar Cone 120 Watts 4-Ohm



COAXIAL SPEAKERS

G6.9XL	DS18 PR GEN-X 6x9IN 4-Way Coaxial Speakers 180 Watts 4-Ohm
G6.5CX	DS18 PR GEN-X 6.5IN 2-Way Component Speaker System 150 Watts 4-Ohm
G6.5XL	DS18 PR GEN-X 6.5IN 3-Way Coaxial Speakers 150 Watts 4-Ohm
G5.7XL	DS18 PR GEN-X 5x7IN 3-Way Coaxial Speakers 165 Watts 4-Ohm
G5.25XL	DS18 PR GEN-X 5.25IN 2-Way Coaxial Speakers 135 Watts 4-Ohm
G4.6XL	DS18 PR GEN-X 4x6IN 2-Way Coaxial Speakers 135 Watts 4-Ohm
G4XL	DS18 PR GEN-X 4IN 2-Way Coaxial Speakers 120 Watts 4-Ohm

SUBWOOFERS

GEN-X124D	DS18 GEN-X 12IN Subwoofer 900 Watts Dvc 4-Ohm
GEN-X104D	DS18 GEN-X 10IN Subwoofer 800 Watts Dvc 4-Ohm



SHALLOW SUBWOOFERS

IXS12.4D	DS18 EA IXS Shallow 12IN Subwoofer 1600 Watts Dvc 4-Ohm
IXS10.4D	DS18 EA IXS Shallow 10IN Subwoofer 1200 Watts Dvc 4-Ohm



SRW SUBWOOFERS

SRW bass series was made to produce great bass within a shallow sub frame exceeding most other subs volume while also coming in at an amazing price point. Large surround with flexible spider packs will help the CCA voice coil teach maximum xmax producing full and deep bass with a up to spec box. Shallow mount size will let you fit this sub in compact places and requires less box space than other subs its size giving you many options in which to place it.

Item Number	Size	RMS/Peak Power	Impedence	Magnet
SRW8.4D	8"	150W/300W	4+4 OHMS	32 oz.
SRW12.4	12"	220W/440W	4 OHMS	45 oz.
SRW10.4	10"	200W/400W	4 OHMS	45 oz.



ZR SERIES SUBWOOFERS

The ZR subline is a great entry level subwoofer that both handles great power and gives you smooth clean bass. These subs work great in both sealed and ported boxes giving you many options for placement in any vehicle.

Item Number	Size	RMS/Peak Power	Impedence	Magnet
ZR12.4D	12"	750W/1500W	4+4 OHMS	100 oz.
ZR10.4D	10"	700W/1400W	4+4 OHMS	100 oz.



375 WATT 8 IN 2-WAY MARINE WATER RESISTANT SPEAKERS WITH INTEGRATED RGB LED LIGHTS

NXL-8

- 8" • RMS Power: 125W • MAX Power: 375W • Magnet Type: Y35 Ferrite Main Magnet & Reverse Neodymium
- Sensitivity: 93dB at 1 w/m • Nominal Impedance: 4 ohm • Frequency Response: 35Hz - 23KHz • Mounting Depth: 3.11"/79mm • Cut-out Diameter: 7.09"/180mm • Overall Diameter: 8.58"/218mm • Overall Height: 4.45"/113mm
- Tweeter Size: 25mm Titanium Dome PEI Surround • Integrated RGB LED lighting • IP65 Marine Grade Compliant Specifications
- 100% UV Stable • High Temp Injection molded composite • High gloss injection molded composite • ASA grills with UV coating



120 WATT 1.92 IN SILK DOME TWEETERS

CXT

- 1.9 inch overall diameter with a 1 inch voice coil is designed to make crisp and bright high frequencies with maximum loudness for your system. • Small design makes it easy to mount and even easier to pair together for great looks and easy installations. • Power rating of 30w AES and 120 peak which will allow the high frequencies to play with authority.



WHEEL WELL SUBWOOFER ENCLOSURE 10 IN SEALED LEFT AND RIGHT SIDE FOR JLU JEEPS

JL-SUB10/LR

- Fits 10" Subwoofer (DS18 CF-10SUB Recommended) • Injected High Density ABS • UV Protected and All Elements Ready • Lightweight and Strong Material • Mounting Bracket and Hardware Included • 1 Meter 6 Core Input Wire (Speaker input and RGB) • Internal VOL Area : 0.5 CuFt/14L



TAILGATE PLATINUM PACKAGE FOR JEEP JT,JK,JL

JMID

• High strength plastic mold injected enclosure for two flat mount 10 inch midrange speakers and two tweeters. • Easily mountable on the rear gate of your JT, JK, or JL Jeep saving you space while getting maximum loudness. • High powered amplifier especially picked to perfectly match the power needs of your setup with included amp kit. • RGB LED lights included on the ensure grill to give you a nice aesthetic ambience to match your theme or existing light setup. LED-BTC controller included so you can easily change the colors with your phone **PACKAGE INCLUDES: J-MID Unloaded Enclosure Box** • For Proper Use, Space Saving Install on Tailgate • Size: D x W x H : 28.74" (730mm) / 13.77" (350mm) / 5.9" (150mm) • 6 Core 1.5m Input Wires for RGB, Midrange Speakers and Tweeters 2x **PRO-X Series 10 inch**. • Kapton voice coil • 4 or 8 Ohms • 600-800 w MAX. 2x **PRO-TW120/ PRO-TWX1** • 4 Ohms • 240w Max • 1" Voice Coil • Available in black or silver 1x **GEN-X FULL RANGE CLASS AB 4 CHANNEL AMPLIFIER** • 4 channel amplifier 1x **LED-BTC** • Module that will allow you to control lights via Bluetooth • RGB lights will allow you to make any color 1x **AMPKIT** • Power, Ground, RCA and All Wires and Accessories Need to Run In Your Jeep • CCA Wires



DOWN FIRE SUBWOOFER ENCLOSURE 2 X 12 IN PLEXIGLASS AND LED LIGHTS FOR JKU,JLU JEEPS

JSUB.2

• Fits Any DS18 12" Subwoofer • Dream RGB LED Light built-In • Acrylic Viewing Window for the Subwoofers • The Mounting Bracket for JKU & JLU Is Included • 2m Dream RGB Input Wires • Speaker Connect Wires Included • Angle Mounting "L" Bracket Included • Black Textured Paint MDF Enclosure • Internal Vol Area: 3.2 Fr3/ 90.6 L • Port Tune: 35hz



OVERHEAD SOUND BAR SYSTEM FOR JL/JLU/JT GLADIATOR JEEPS

JL-SBAR/BK

• Made by High Strength Plastic Injection Molding Guaranteeing Very High Strength and Durability. • Made to Hold (4) 8" Speakers and (4) 3.72" Large Tweeters. • Drop In Installation Only Requiring Very Minor Trimming of the Panels and Mounting Tab. • Included DS18 LED-RGB Lights to Match Your Rock Lights or Existing RGB Lights for A Great Show Look. • 8" Speaker Mounting (Fits Any DS18 8" Speaker) • 3.72" Tweeter Mounting • 10.5 cm Max Speaker Depth • High Density Plastic Molded with Color Injected • UV Protected and All Elements Ready • Light Weight and Strong Material • O.E.M Fit



TAIL GATE SUBWOOFER ENCLOSURE 2 X 10 IN FOR TJ/JK/JKU/JL/JLU JEEPS

JBASS

• Mounts 2 x 10" Subwoofer (DS18 IXS10.4D 10") • Mounting Hole Diameter: 234mm (9.21") • For Proper Use, Space Saving Install on Tailgate • Size: D x W x H : 28.74" / 13.77" / 5.9" mm • 6 Core 1.5m Input Wires for RGB and Woofer Speakers



PLUG AND PLAY HARNESS FOR JEEP JL SOUND BAR AND AMPLIFIER

JL-HARNESS

• Plug and play design that allows for hassle free installation without manual cutting or splicing. Color coded for easy installation and the supplied brackets will secure the unit firmly to the chassis.





7 IN TOUCHSCREEN MULTIMEDIA PLAYER WITH ANDROID AUTO & CARPLAY

BVCP9800W

• 85 Watts x 4 Max Power, Balance/Fader and Preset built-in EQ • No CD or DVD Player, Plays Bluetooth/USB/SD, MP3, WAV, AVI, FLAC 24 BIT High Res Audio, FM/AM, Digital Media from Smart Phones • Compatible with Audio out from Smart Phones and MP3 Players • USB, SD, Aux, AV, Front and Rear Camera, Steering Wheel Control Input • Front, Rear & Sub Pre Amp Outputs • USB Charging, Multi Color Illumination Options, • Bluetooth Hands Free, Make and receive calls, Bluetooth Audio Streaming. Play and control music and apps like Spotify/Pandora wirelessly



10.1 IN TOUCHSCREEN MULTIMEDIA PLAYER WITH ANDROID AUTO & CARPLAY

BCPA10

• 80 Watts x 4 Max Power, RBDS Tuner, Balance/Fader and Preset built-in EQ • No CD or DVD Player, Plays Bluetooth/USB, MP3, WAV, AVI, FM/AM • Compatible with Audio out from Smart Phones and MP3 Players • USB, AV, Rear Camera, Steering Wheel Control Input • Front, Rear & Sub Pre Amp Outputs • USB Charging, Multi Color Illumination Options • Bluetooth Hands Free, Make and receive calls, Bluetooth Audio • Streaming. Play and control music and apps like Spotify/Pandora wirelessly



6.75 IN TOUCHSCREEN MULTIMEDIA PLAYER WITH ANDROID AUTO & CARPLAY

MRCP9685A

• Weather Proof 80 Watts x 4 Max Power, RBDS Tuner, Balance/Fader and Preset built-in EQ • No CD or DVD Player, Plays MP3, WAV, AVI, FM/AM • Compatible with Audio out from Smart Phones and MP3 Players • USB, AV, Rear Camera, Steering Wheel Control Input • Front, Rear & Sub Pre Amp Outputs • USB Charging, Multi Color Illumination Options • Bluetooth Hands Free, Make and receive calls, Bluetooth Audio Streaming. Play and control music and apps like Spotify/Pandora wirelessly



CD/MP3 PLAYER DETACH PANEL WITH WIRELESS REMOTE



750BRGB

• 60 Watts x 4 Max Power, Balance/Fader/Bass/Treble and Preset built-in EQ • Plays Bluetooth/CD/USB, MP3, WMA, FM/AM, Digital Media from Smart Phones • Compatible with Audio out from Smart Phones and MP3 Players • USB, Aux, Input • Front & Rear Pre Amp Outputs • Detachable Front Panel, Wireless Remote, USB Charging, Multi Color Illumination Options • Bluetooth Hands Free, Make and receive calls, Bluetooth Audio Streaming • Play and control music and apps like Spotify/Pandora wirelessly



MULTIMEDIA PLAYER (NO CD / DVD)



611UAB

• 50 Watts x 4 Max Power, Balance/Fader/Bass/Treble and Preset built-in EQ • No CD or DVD Player, Plays Bluetooth/USB, MP3, WMA, FM/AM, Digital Media from Smart Phones • Compatible with Audio out from Smart Phones and MP3 Players • USB, Aux, Input • Front & Rear Pre Amp Outputs • USB Charging, • Bluetooth Hands Free, Make and receive calls, Bluetooth Audio Streaming. Play and control music and apps like Spotify/Pandora wirelessly



MARINE CD/MP3 PLAYER WITH WIRELESS REMOTE



MR508UABS

• Weather Proof 50 Watts x 4 Max Power, Balance/Fader/Bass/Treble and Preset built-in EQ • Plays MP3, WMA, FM/AM, Digital Media from Smart Phones • Compatible with Audio out from Smart Phones and MP3 Players • PTT (Push to Talk) Capable, USB, Aux, Input • Front & Rear Pre Amp Outputs • Wireless Remote • Bluetooth Hands Free, Make and receive calls, Bluetooth Audio Streaming. Play and control music and apps like Spotify/Pandora wirelessly



MARINE MULTIMEDIA PLAYER WITH DETACHABLE FRONT PANEL



MR1308UABK

• Weather Proof 50 Watts x 4 Max Power, Balance/Fader/Bass/Treble and Preset built-in EQ • No CD or DVD Player, Plays MP3, WMA, FM/AM, Digital Media from Smart Phones • Compatible with Audio out from Smart Phones and MP3 Players • USB, SD, Aux, Input • Front Pre Amp Outputs • Detachable Front Panel, Wireless Remote • Bluetooth Hands Free, Make and receive calls, Bluetooth Audio Streaming. Play and control music and apps like Spotify/Pandora wirelessly

FRONT SYSTEM FOR HARLEY DAVIDSON

BHD3F

• Full range weatherproof 6.5" per Pair speakers • High output compact weatherproof 4 channel / class D amplifier with model specific amplifier mounting plate • Speaker Grille Options – (2) 1998-2013 Electra, (2) 2014+ Street Glide, (2) 2015+ Road Glide • Impedance: 4 Ohms, Frequency: 100 Hz to 18 kHz, Sensitivity: 90 dB • 1" (25mm) dome tweeter



1200 WATT ANARCHY SERIES AMPLIFIER

AC1200.4

• Mosfet Power Supply • Variable Bass Boost
• High and Low Level Inputs • Chs/Class: 4/AB
• 2 Ohm RMS: 225W x 4 • Max Watts: 1200W



6.75 IN TOUCHSCREEN MULTIMEDIA PLAYER

P70CPA

• 80 Watts x 4 Max Power, RDS Tuner, RBDS Tuner, Balance/Fader/Bass/Treble and Preset built-in EQ • No CD or DVD Player, Plays Bluetooth/USB/SD, MP3, WMA, WAV, FLAC, OGG, APE, FLAC 24 BIT High Res Audio, FM/AM, Digital Media from Smart Phones
• Compatible with Audio out from Smart Phones and MP3 Players • USB, SD, Aux, AV, Rear Camera, Steering Wheel Control Input Front, Rear & Sub Pre Amp Outputs • Camera included, Multi Color Illumination Options • Bluetooth Hands FreeBluetooth Audio Streaming. Make and receive calls, play and control music and apps like Spotify/Pandora wirelessly



9 IN SINGLE DIN TOUCHSCREEN MECHLESS MULTIMEDIA PLAYER

P90CPA

• 85 Watts x 4 Max Power, RDS Tuner, RBDS Tuner, Balance/Fader/Bass/Treble and Preset built-in EQ • No CD or DVD Player, Plays Bluetooth/USB, MP3, WMA, WAV, FLAC, OGG, APE, FLAC 24 BIT High Res Audio, FM/AM, Digital Media from Smart Phones • Compatible with Audio out from Smart Phones and MP3 Players • USB, Aux, AV, Front and Rear Camera, Steering Wheel Control Input • Front, Rear & Sub Pre Amp Outputs • Multi Color Illumination Options • Bluetooth Hands FreeBluetooth Audio Streaming. Make and receive calls, play and control music and apps like Spotify/Pandora wirelessly



WEATHERPROOF 18 IN ATV/UTV SOUND BAR AUDIO SYSTEM WITH BLUETOOTH

PSX18

• Weather Proof IPX5 Rated One Pair of 4" Full Range Speakers • Weatherproof IPX 5 Rated One Pair of 1" Soft Dome Tweeters
• Built-in Class A/B Amp and 3.5mm Aux Input Compatible with Audio Output of Smartphones and MP3 Players • Bluetooth Audio Streaming - play and control music and apps like Spotify & Pandora wirelessly • IPX 5 Rated Weatherproof Enclosure, USB full charging and Wireless Remote • Built-in DSP, Preset EQ • Multi-Angle Adjustable Clamps fit bars from 1.75" to 2". Great for ATV's or UTV's!



10 IN 800 WATT SINGLE VOICE COIL SUBWOOFER

PX10

• One 10" Woofer with SINGLE 4 ohm 2" Copper Voice Coil • 800 Watts MAX 400 Watts RMS Power Handling • 85dB Sensitivity, 45.76 Hz Resonant Frequency • Poly Injection Cone and Rubber Surround • Works in .6 CuFt Sealed or 1 CuFt Ported enclosure



12 IN 1500 WATT SINGLE VOICE COIL SUBWOOFER

TQ12S

• One 12" Woofer with SINGLE 4 ohm 2" Voice Coil • 1500 Watts MAX 750 Watts RMS Power Handling • 87dB Sensitivity, 35 Hz Resonant Frequency • Paper Cone and Foam Surround • Works in 1.136 CuFt Sealed or 1.66 CuFt Ported enclosure



PNP SERIES

GOOD



TERMINATOR SERIES

BETTER



GEN4® SERIES

BEST



PATENT NO. 11,054,127 - 10,801,714 - 9,243,796 - 9,995,473

P-SERIES PROJECTOR PERFECT HEADLIGHT KITS

- Projector designed optics
- Includes canbus interface
- All in one solution
- 3-Year MFG warranty
- Super high lux output



WIRELESS SOLAR POWERED CAB LIGHTS



SKU: 1007602

- No drilling, holes or wiring needed
- Kit includes (5) wireless, amber LED lights w/ 3M adhesive backing
- 60 raw Lumens per light or 300 raw Lumens per kit

PATENT NO. 10,808,898



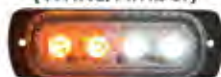
SKU: 1007472

FLUSH MOUNT STROBE MARKER

- 4 & 6-LED strobes w/ 19 different strobe patterns
- Durable die-cast aluminum base
- Daisy chain linking capability & syncing
- Features pattern select wire with pulse



RS-70014W-A
(White/Amber)



RS-70016W-A
(White/Amber)



LED SPOT LIGHTS

- Combination spot & flood optics
- Durable spot lights, built to last
- IP67 weatherproof
- 27-Watts

RS-27W-S

4" Square LED Work Spot Light



RS-27W-R

4" Round LED Work Spot Light



27 WATTS

TRIPLE ROW LED TAILGATE LIGHT BAR

RS120048

48" Triple Row LED Light Bar

RS120060

60" Triple Row LED Light Bar

- 48" & 60" silicone sleeved 2-color strips to fit any vehicle
- Mounts to the underside of vehicle with automotive grade 3M adhesive backing
- 5-function 3-color



INTERIOR/EXTERIOR CUSTOM ACCENT LIGHTING KITS



AKIT18



- 18-in-1 ambient acrylic interior LED kit
- Millions of color & chasing pattern options
- Light up your doors, dash, door handles, door pockets, & footwells



HOODKIT1



- LED Knight Rider Scanning Hood Brow DRL Flex Kit in Cool White,
- Sleek and modern design that adds a touch of futuristic style
- Cool white LEDs with a scanning motion

LED UNDERBODY KITS

RSUKIT

- Kit includes (2) 3", (2) 4" strips, hardware, wiring & remote
- Control box & remote offer 16 selectable colors
- Dimmer & speed control, white strobe, fade, flash, & music cycles



RSUKIT-C

- Durable aluminum channel design
- Hundreds of chasing patterns
- Syncs with AKIT18
- Comes with remote control



INTERIOR KIT



RSIKIT

- Great footwell and under-seat LED lighting
- Kit Includes four 12" self-adhesive strips, wiring and remotes



MOTO KIT

RSMKIT

- Made to fit any make and model
- Kit includes ten 4" strips with self-adhesive backing hardware, wiring and remotes



WHEEL WELL KIT



RSWWKIT

- Pair with RSUKIT for unified undercarriage lighting
- Kit includes four 24" self-adhesive strips, wiring, and remotes



BLUETOOTH RGB LED WHEEL LIGHT KITS

RSCSWL14

14" Kit

RSCSWL15

15.5" Kit

RSCSWL17

17" Kit



14" Diameter Kits - 16"-19" Wheels

RSCSWL14-C

14" Chasing Kit

RSCSWL15-C

15.5" Chasing Kit

RSCSWL17-C

17" Chasing Kit



15.5" Diameter Kits - 20"-26" Wheels

RSCSWL14-DR

14" Turn Signal Kit

RSCSWL15-DR

15.5" Turn Signal Kit

RSCSWL17-DR

17" Turn Signal Kit



17" Diameter Kits - 27"+ Wheels

RGB+W ROCK LIGHT KITS



- Comes in single color, RGB and RGB+W
- Available in single pod, 4, 6, 8 or 12 pod kits
- Ideal use for wheel well or underkit accent lighting



RS4PRGBW

4-Pod Kit

RS6PRGBW

6-Pod Kit

RS8PRGBW

8-Pod Kit

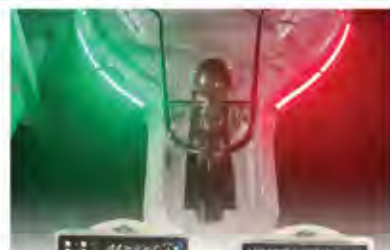
RS12PRGBW

12-Pod Kit



CUSTOM STRIP NAVIGATION LIGHTING

- Kit comes w/ (1) red LED strip, (1) green LED strip, & (4) stylish end caps
- Starboard & port sidelight nav kit
- Comes in 1FT, 2FT, 3FT, & 4FT length kits
- Heavy duty 3M adhesive backing on custom tape
- Chrome end cap covers included to cover wiring



MSL1FTSL

12" Nav Light LED Strip Kit

MSL2FTSL

24" Nav Light LED Strip Kit

MSL3FTSL

36" Nav Light LED Strip Kit

MSL4FTSL

48" Nav Light LED Strip Kit



CUSTOM NAVIGATION LIGHTING

MSSL12BSG

Starboard NAV Light
(Green - Black Shell)



MSSL12BSGR

Bow NAV Light
(Green/Red - Black Shell)



MSSL12BSR

Port NAV Light
(Green/Red - Black Shell)



MSMH12BSW

Mast/Stern Light
(White - Black Shell)



MSPS12WSRG

Starboard & Port Light Set
(Red & Green - White Shell)



MSPS12BSGR

Starboard & Port Light Set
(Red & Green - Black Shell)



- Low energy consumption LED technology
- Upgrade your port & starboard lighting with LED
- Screw mount systems
- ABS material (except on MS440264)
- IP67 dust & waterproof



MS440264

Bi-Color Starboard & Port Light Set
(Red & Green - Black Shell)



DOWNWARD BEVELED DECK LIGHTS

- Solid or multi-color versions
- Compatible with RF or bluetooth controller
- Textured black or brushed metal finish
- Compact and simple to install



MSDLBCW

Black LED Deck Light (White)



MSDSLSSB

Stainless LED Deck Light (Blue)

MSDLBCRGB

Black LED Deck Light (RGB)

MSDSLSSRGB

Stainless LED Deck Light (RGB)

UNDERWATER TRANSOM LIGHTS

TL48RGBW

RGB+W LED

Underwater Transom Light



TL48BW

Blue - White LED

Underwater Transom Light



HYDROBLAST DRAIN PLUG LIGHTS



MS-27RGB

RGB LED

MS-27W

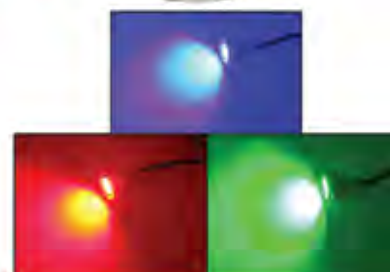
White LED

MS-27B

Blue LED

MS-27R

Red LED



LED GLASS BOTTLE & CUP HOLDER

- Glass bottle & cup holder
- Solid Blue LED / RGB multi-color
- Stainless steel 304
- LED acrylic ring prefabbed

MSCHB

Blue LED Glass Bottle & Cup Holder

MSRGBCH

RGB LED Glass Bottle & Cup Holder

MSRGBCH4C

(4) RGB LED Glass Bottle & Cup Holder Kit
w/ RF Remote Control



LED GLASS BOTTLE & CUP HOLDER



MSTLS01(*)



MSTLS04(*)



MSTLS06(*)



MSTLS10(*)



MSTLS16(*)



MSTLS17(*)



MSTLS24(*)



MSTLS25(*)



MSTLS27(*)



MSTLS14(*)

Switches

- CD/RoHS Compliant
- 1.75" x 1" x 1.75"
- Five 1/4" male contact terminals
- * Available in White or Blue



RSTRUSB(*)

2-Port USB Panels

- CD/RoHS Compliant
- 1.75" x 1" x 1.75"
- Two 1/4" male contact terminals
- * Available in White or Blue



- 12V socket & switch style voltage gauges in various styles for any application
- Some socket & switch style units include USB charging ports and auxiliary audio ports
- Mount into industry standard switchplates & 12V sockets seamlessly



RS50782

#1006328

2-Port
Socket Style USB
w/ Blue Indicator



RS50786

#1006331

Single Source
Socket Style
Voltage Meter (Red)



RS50798

#1006322

Single Source
Socket Style
Voltage Gauge
(Multi-Color)



RS50884

#1006324

2-Port
Socket Style USB
w/ Blue Surround



RS50892

#1006333

Socket Style
USB/Aux Input
w/ Red Indicator



RS50893

#1006321

Dual Source
Socket Style
Voltage Meter (Red)



RS507971B

#1006327

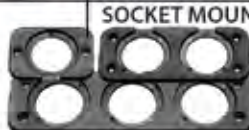
2-Port
Socket Style USB &
Voltage Meter (Blue)



RS4010W

#1006597

Single Source
Socket Style Voltage
Meter (Clear w/ White)



RS4011WB

#1006595

Single Source
Socket Style Voltage
Meter (Clear w/ Blue)



MARINE PRODUCTS

CP6 Compact Marine Stereo



- Bluetooth Audio enabled • USB playback & charging • DAB+ Ready
- Blue Monochrome TFT display • 288W max power (4x 72W) • 1x pair RCA pre-outs (2V) • 1x pair RCA auxiliary inputs • 4 & 2 Ohm stable • 1x 3.5mm jack input • Clock display • Variable Brightness • Rotary Knob control • AM/FM radio • Waterproof IP65 • Silicon faceplate cover (included)



MP6 Shallow Mount Marine Stereo



- Bluetooth Audio enabled • USB playback & charging • DAB+ Ready • Blue Monochrome TFT display • 288W max power (4x 72W) • 1x pair RCA pre-outs (2V) • 1x pair RCA auxiliary inputs • 4 & 2 Ohm stable • Clock display mode • 1x 3.5mm jack input • Rotary Knob control • AM/FM radio with 15 presets • DSP EQ • Bass/Treble • Balance/Fader • 2x 12V Triggers • Waterproof IP65 • Silicon faceplate cover (included)



GP1 Gauge Size Marine Stereo



- Bluetooth Audio enabled • USB playback & charging • DAB+ Ready • Blue Monochrome TFT display • 288W max power (4x 72W) • 1x pair RCA pre-outs (2V) • 1x pair RCA auxiliary inputs • 4 & 2 Ohm stable • Clock display • Variable Brightness • Rotary Knob control • AM/FM radio • Waterproof IP65



AQ-MP-5UBT-S Marine Stereo with Internal Dock



- SiriusXM Satellite Radio Ready* • Bluetooth Ready • Clock Display mode • Apple iOS and USB Navigation • 1x Internal USB input with charging • 1x Rear USB (charging only) • 3" Color Screen • Apple iOS Album Artwork • Waterproof IP55 • Surface Mount USB Socket • Dummy Faceplate / Dust Cover • Rotary Control Knob • 288W Amplifier (max @ 4x 72W) • 2x pair 4V RCA Pre-Outs • 1x pair RCA Auxiliary inputs • 1x 3.5mm Jack input • AM/FM Radio with 30 presets • DSP EQ, Bass/Treble, Loudness, Balance/Fader • 2x 12V Triggers • Removable Faceplate • Internal compartment fits most smartphones and media devices



* Requires Subscription and SXV-300V1 Tuner/Antenna (SOLD SEPARATELY)

BC6+ Hide-Away Marine Stereo



- Bluetooth Audio enabled • USB input • Device charging via USB • FM radio with 3x presets • 1x pair RCA auxiliary inputs • 1x 3.5mm jack auxiliary input • 2x pair high-power (4V) RCA pre-outs • Halo Aerial Technology • Bridge Mode • DSP EQ • Virtual Bass (VBass) • Bass/Treble • Balance/Fader • 288W max power (4x 72W) • 4 & 2 Ohm stable • 2x 12V Triggers • Waterproof IP65 (Remote IP66) • Handheld Remote Control (included) • Charges Remote Control via a USB cable



BC6 MINI Hide-Away Marine Stereo



- Bluetooth Audio enabled • 1x pair RCA auxiliary inputs • 1x pair RCA pre-outs (2V) • Halo Aerial Technology • Waterproof IP65 • 288W max power (4x 72W) • 4 & 2 Ohm stable • Electronic Crossover • Handheld Remote Control • (sold separately) • DSP EQ* • Virtual Bass (VBass)* • Bass/Treble* • Balance* • 2x 12V Triggers* • Charges Remote Control via USB cable*



* Feature unlocked with Remote Control RF6 KIT (SOLD SEPARATELY)

RF6 KIT Handheld Marine Remote Control Kit

- FOR USE WITH CP6, MP6 and BC6 MINI
- Floating design • LCD screen • 40ft range
- Waterproof IP66 • UV & Salt/Fog resistant
- Includes Handset, RF Receiver and USB Charging Cable



RF6 REMOTE & CHARGING CABLE Handheld Marine Remote Control & Charging Cable

- FOR USE WITH BC6+
- Floating design • LCD screen • 40ft range
- Waterproof IP66 • UV & Salt/Fog resistant
- Includes Handset and USB Charging Cable



WR6 Wired Marine Remote Control

- FOR USE WITH CP6, MP6 and BC6+
- Flush mount design • LCD screen • Polished Stainless Steel Bezel • Waterproof IPx5 • UV & Salt/fog resistant • Requires extension cable

- AQ-Y-1 - Y connector enabling multiple remotes
- AQ-EXT-3 - 3' extension cable
- AQ-EXT-12 - 12' extension cable
- AQ-EXT-14 - 14' extension cable
- AQ-EXT-24 - 24' extension cable



AQ-WR-5F Wired Marine Remote Control

- FOR USE WITH AQ-MP-5UBT-S
- Flush mount design • LCD screen • Polished Stainless Steel Bezel • Waterproof IPx5 • UV & Salt/fog resistant • Requires extension cable

- AQ-Y-1 - Y connector enabling multiple remotes
- AQ-EXT-3 - 3' extension cable
- AQ-EXT-12 - 12' extension cable
- AQ-EXT-14 - 14' extension cable
- AQ-EXT-24 - 24' extension cable



MARINE PRODUCTS

SWA6+ Combined Stereo & Subwoofer System



Stereo Specification

- Bluetooth enabled • USB playback • Device charging via USB • FM radio • 2x RCA inputs • 2x speaker outputs • 288W max power (144W full range, 144W subwoofer) • 4 Ohm & 2 Ohm stable • Electronic cross-over • 125-20,000Hz frequency response • 12V Trigger • Virtual Bass (VBass) • Bass/Treble • Balance • Loudness • RF6 Handheld Remote Control (included)

Subwoofer Specification

- 8" cone • Tuned Port • 144W max power • 26-125Hz frequency response

SWA6 Combined Stereo & Subwoofer System



Stereo Specification

- Bluetooth enabled • Device charging via USB • 2x RCA inputs • 2x speaker outputs • 288W max power (144W full range, 144W subwoofer) • 4 Ohm & 2 Ohm stable

Subwoofer Specification

- 8" cone • Tuned Port • 144W max power • 26-125Hz frequency response

AD600.5 5/4/3 Channel Marine Amplifier

- 600W max power • 10-20,000Hz frequency response • Digital (Class D) technology • Waterproof IP65
- 5x RCA inputs • 5x speaker inputs • Bridge Mode • Bass Boost (0-18dB @ 50Hz) • Variable Gain Control • 4 Ohm & 2 Ohm stable
- 4x 50W + 1x 200W (4 Ohms) • 4x 75W + 1x 300W (2 Ohms) • 2x 150W (4 Ohms - bridged)



AD500.4 4/3/2 Channel Marine Amplifier

- 600W max power • 20 Hz – 20,000 Hz frequency response • Digital (Class D) technology • Waterproof IP65 • 4x RCA inputs • 4x speaker inputs • Bridge Mode • Variable Gain Control • 4x150W max power (2 Ohms) • 4x 100W max power (4 Ohms) • 1x 300W max power (4 Ohms - bridged)



RGB Controller

- 5A total power
- Controls up to 32 devices
- Works with the Aquatic AV app in order to display over a thousand colors



AQ-AD300.2-MICRO 2 Channel Marine Amplifier

- 300W max power • 10-45,000Hz frequency response • Digital (Class D) technology • Waterproof IP65 • 2x RCA inputs • 4 Ohm & 2 Ohm stable • Bridge Mode • Electronic Cross-Over (40-400Hz) • Bass Boost (0-12dB) • 2x 150W max power (2 Ohms) • 2x 100W max power (4 Ohms) • 1x 300W max power (4 Ohms - bridged)



Economy 6.5" Speakers

- Full range, co-axial Speaker • 6.5" cone • 13mm tweeter • 160W total power (2x 80W) • 80W RMS power (2x 40W) • 83-20,000Hz frequency response • 4 Ohm impedance • Removable grill • White or Black color



AQ-SPK6.5-4EW - pair - White

AQ-SPK6.5-4EB - pair - Black

Elite 6.5" Speakers

- Full range, co-axial Speaker • RGB LED cone illumination • 6.5" cone • 25mm tweeter • 180W max / 90W RMS power • 50-20,000Hz frequency response • 4 Ohm impedance • White or Black color



ELITE 6.5 White - pair - White

ELITE 6.5 Black - pair - Black

PRO Classic 6.5" Speakers

- 6.5" RGB Speaker
- Customizable RGB cone illumination
- 6.5" cone • 120W total power
- 60W RMS power
- 60 Hz – 20 kHz frequency response
- 4 Ohm impedance
- UV & Salt/Fog resistant
- White or black color



PRO Classic 10" Subwoofer

- RGB Subwoofer
- Customizable RGB cone illumination
- 10" cone
- 400W total power
- 300W RMS power
- 20 – 1000Hz frequency response
- 4 Ohm impedance
- UV & Salt/Fog resistant
- White or black color



PRO Sport 6.5" RGB Speakers

- 6.5" RGB Speaker
- Customizable RGB cone illumination
- 6.5" cone • 120W total power
- 60W RMS total power
- 60 Hz – 20 kHz frequency response
- 4 Ohm impedance
- UV & Salt/Fog resistant
- Matte black color



PRO Sport 10" Subwoofer

- RGB Subwoofer
- Customizable RGB cone illumination
- 10" cone • 400W total power • 300W RMS power
- 20 – 1000Hz frequency response
- 4 Ohm impedance
- UV & Salt/Fog resistant
- Matte black color



FOR HARLEY-DAVIDSON®

AQ-MP-5UBT-HS Harley Stereo



- SiriusXM Satellite Radio Ready* • Bluetooth Ready • Clock Display mode • Apple iOS and USB Navigation • 1x Internal USB input w/ Charging • 1x Rear USB (charging only) • 3" Color Screen • Apple iOS Album Artwork • Waterproof IP55
- Rotary Control Knob • 288W Amplifier (max @ 4x 72W) • 2x pair 4V RCA Pre-Outs • 1x pair RCA Auxiliary inputs • 1x 3.5mm Jack input • FM/AM Radio with 30 presets • DSP EQ, Bass/Treble, Loudness, Balance/Fader • 2x 12V Triggers • Removable Faceplate • Internal compartment fits most smartphones and media devices
- Surface Mount USB Socket • Dummy Faceplate / Dust Cover

AQ-MP-5BT-H Harley Stereo



- Bluetooth Ready • 1x USB (charging only) • 3" Monochrome Dot Matrix Display • Waterproof IP55 • Rotary Control Knob • FM/AM Radio with 30 presets • Bass/Treble, Balance/Fader • 288W Amplifier (max @ 4x 72W) • 1x pair 2V RCA Pre-Outs • 1x pair RCA Auxiliary inputs • 1x 3.5mm Jack input • Removable Faceplate • Internal compartment fits most smartphones and media devices

HS113 Ultra+ 6.5" RGB Speakers

- Designed for Batwing, Street Glide, and Road Glide fairings • 6.5" High-Performance speaker • 2-Way Design • 1" Silk Neodymium Tweeter
- 300W Total Power (2x150W) • 150W RMS Power (2x75W) • 60Hz - 20,000Hz Freq. Response • 4 Ohm Impedance • Waterproof • UV Resistant • Salt/Fog Resistant • Includes mounting rings and mounting hardware



AQ-AD300.2-MICRO 2 Channel Harley Amplifier

- 300W max power • 10-45,000Hz frequency response • Digital (Class D) technology
- Waterproof IP65 • 2x RCA inputs • 4 Ohm & 2 Ohm stable • Bridge Mode • Electronic Cross-Over (40-400Hz) • Bass Boost (0-12dB) • 2x 150W max power (2 Ohms) • 2x 100W max power (4 Ohms)
- 1x 300W max power (4 Ohms - bridged)



UHP3 Ultra RGB Kit for Harley



- 1 x AQ-MP-5UBT-HS SiriusXM, Bluetooth, USB Waterproof Stereo
- 1 x pair HS113 Ultra+ 6.5" RGB 300W Speakers
- 1 x pair Speaker Mounting Rings
- 1 x AQ-AD300.2-MICRO Waterproof 2 Channel 300W Amplifier
- 1 x AQ-USB-1 Surface Mount USB Socket
- 1 x RG100 RGB Controller

Ultra 6x9" Saddlebag Speaker Kit for 1998-2013 & 2014+ Harley Davidson Touring Motorcycles

- 2x ULTRA 6x9" speakers (300W max power/200W RMS power) • Flush mounted lid grills • Mounting plate
- Lid cutout template • Speaker/RGB wiring harness • Mounting hardware



AQ-AK-RG Amplifier Mounting Kit



- For Harley-Davidson® Road Glide fairings (1998-2013 models) • Amplifier Mounting Bracket • Amplifier Power & Ground Wire Extension Cable • Mounting Hardware

GL114 Amplifier Mounting Kit



- For Harley-Davidson® Road Glide fairings (2015+ models)
- Amplifier Mounting Bracket
- Amplifier Power & Ground Wire Extension Cable
- Mounting Hardware

RGB Controller

- 5A total power
- Controls up to 32 devices
- Works with the Aquatic AV app in order to display over a thousand colors



AQ-AK-BAT Amplifier Mounting Kit



- For Harley-Davidson® Batwing fairings (1998-2013 models) • Amplifier Mounting Bracket • Amplifier Power & Ground Wire Extension Cable • Mounting Hardware

BT114 Amplifier Mounting Kit



- For Harley-Davidson® Batwing fairings (2014+ models)
- Amplifier Mounting Bracket
- Amplifier Power & Ground Wire Extension Cable
- Mounting Hardware

Subwoofer Enclosures

Vented Boxes

BASS10V	10" Dual Vented Box
BASS12V	12" Dual Vented Box
BASS15V	15" Dual Vented Box
SBASS10V	10" Single Vented Box
SBASS12V	12" Single Vented Box
SBASS15V	15" Single Vented Box



Heavy Duty Boxes

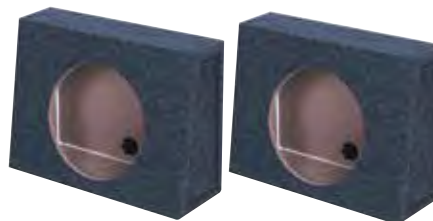
Made with 1" MDF on Face plus 3/4" on Rest

HD110 VENTED	10" Single Heavy Duty Vented Box
HD112 VENTED	12" Single Heavy Duty Vented Box
HD115 VENTED	15" Single Heavy Duty Vented Box
HD210 VENTED	10" Dual Heavy Duty Vented Box
HD212 VENTED	12" Dual Heavy Duty Vented Box
HD215 VENTED	15" Dual Heavy Duty Vented Box
HD110	10" Single Heavy Duty Sealed Box
HD112	12" Single Heavy Duty Sealed Box
HD115	15" Single Heavy Duty Sealed Box
HD210	10" Dual Heavy Duty Sealed Box
HD212	12" Dual Heavy Duty Sealed Box
HD215	15" Dual Heavy Duty Sealed Box
HDBASS12	12" Dual Heavy Duty Sealed Box
HDBASS15	15" Dual Heavy Duty Sealed Box



Twin Boxes

TW10	10" Twin Wedge Box
TW12	12" Twin Wedge Box



Truck Boxes

HD210 Truck	10" Dual Truck Box
HD212 Truck	12" Dual Truck Box



Dodge Trucks

DODGE10" or 12"	Dual 10/12 XCAB 1996-2001
DODGE10" or 12" 4DOOR	Dual 10/12 QUAD CAB 2002 - Current

— Call for Quantity and Pallet Pricing and Additional Models —

Subwoofer Enclosures

Ford Trucks

FORD10 or 12 2004
FORD10 or 12 2010 DF
FORD10 SDUTY

Dual 10/12 XCAB & SUPER CREW 2004 - 2009
Dual 10/12 XCAB & SUPER CREW 2010 - Current
Dual 10" FORD SUPER DUTY F250/350/450/550 2004 - Current



GMC/CHEVY Trucks

GMC10DFDUAL & GMC12DF DUAL
GMC102004 & GMC122004
GMC/AVALANCHE10 DF
GMC10200HT & GMC122007HT
GMC10 2014 4DR & GMC12 2014 4DR
GMC10 2014 DCAB & GMC12 2014 DCAB
QBGMC10 2019
QBGMC12 2019
COLORADO/CANYON CREW

Dual 10/12 XCAB 1999 - 2006 DFIRE
Dual 10/12 CREW CAB Behind Seat 2004 - 2006
Dual 10" AVALANCHE All Year & 2004 - 2006 Underseat
Dual 10/12 XCAB High Trans 2007 - Current
Dual 10/12 DOUBLE CAB 2014
Dual 10/12 DOUBLE CAB 2014
2hole 10" for GMC/Chevy 2019 2020
2hole 12" for GM /Chevy 2019-2020
Dual 10" Crew All Years 2004 - Current



Misc Truck Boxes

FRONTIER10 2005

Dual 10 NISSAN FRONTIER 2005 - 2013



Universal QBomb Boxes (Spray Liner Coated)

QBOMB8V
QBOMB10V
QBOMB12V
QBOMB12VL + SQUARE HOLE
QBOMB15V
QBOMB15V + SQUARE HOLE
QBOMB12VL SINGLE + SQUARE HOLE
QBOMB15VL SINGLE + SQUARE HOLE
QBOMB12S
QBOMB12S SINGLE
QBOMB10TB
QBOMB8VL SINGLE
QBOMB10VL SINGLE
QBOMB65VL SINGLE
QBOMB12TB
QBOMB15VL
QBOMB10 OR 12 OR 15 HP SINGLE
QBOMB10 & 12HP (DUAL)

2 HOLE 8" VENTED
DUAL 10" VENTED FINISHED w/BEDLINER
DUAL 12" VENTED FINISHED w/BEDLINER
DUAL 12" VENTED XTRA DEEP FINISHED w/BEDLINER-
DUAL 15" VENTED FINISHED w/BEDLINER
SINGLE 15" VENTED X-LARGE SPL
SINGLE 12" SIDE VENTED XTRA DEEP FINISHED w/BEDLINER
SINGLE 15" VENTED XTRA DEEP FINISHED w/BEDLINER-
DUAL 12" SEALED FINISHED w/BEDLINER
SINGLE 12" SEALED FINISHED w/BEDLINER
DUAL 10" TRIANGLE PORTS
SINGLE 8" SIDE PORTED
SINGLE 10" SIDE VENTED XTRA DEEP
SINGLE 6" SIDE PORTED
DUAL 12" TRIANGLE PORTS
DUAL 15" VENTED XTRA DEEP w/BEDLINER
SINGLE 10/12/15 HORN PORTED
DUAL 10/12 PORTED HP ENCLOSURE



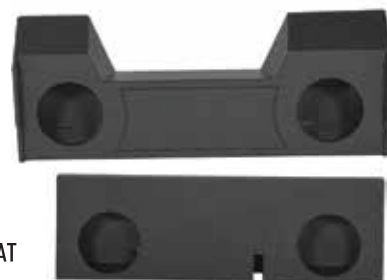
— Call for Quantity and Pallet Pricing and Additional Models —

Subwoofer Enclosures

Vehicle Specific Sprayed Boxes

QBDODGE10 or 12 4DOOR
 QBGMC10 or 12 DF
 QBGMC10 & 12 2007 HT
 QBGMC10 or 12 2007 4DOOR
 QBGMCAVALANCHE10 DF
 QBFORD10 or 12 2004
 QB MIDGATE12 SEALED & VENTED
 QBDODGE10 OR 12 2019
 QBTACOMA10 OR 12 2005

DUAL 10/12 QUAD CAB 2002 - CURRENT
 DUAL 10/12 XCAB 1999-2006 DFIRE
 DUAL 10" XCAB HIGH TRANS 2007 - CURRENT
 DUAL 10/12" CREW CAB 2007 - CURRENT DFIRE
 DUAL 10" AVALANCHE all YEAR & 2004 - 2006 UNDERSEAT
 DUAL 10/12" XCAB & SUPER CREW 2004 - 2009
 DUAL 12" AVALANCHE MIDGATE (Behind Seat) SEALED & VENTED
 Dual 10/12 Crew Cab 1500/3500
 Dual 10/12 2005-Current Double Cab



Ported Vehicle Specific Boxes Spray Liner Coated

QBDODGEQC210 or 212
 QBGMC07210 or 212
 QBGMC14210 or 212
 QBGMC14110
 QBFORD4210
 QBFORD09F350210 or 212
 QBFORD09210 or 09212
 QBTUNDRA14210 CREW
 QBTUNDRA07210 or 212
 QBDODGE19210
 QBGMCFF07208
 QBFORDFF09208
 QBGMCFF07408
 QBFORDFF09408

DUAL 2002 - CURRENT DODGE QUAD CAB
 2007 - 2013 GM CREW CAB
 2014 - CURRENT GM CREW CAB
 2014 - CURRENT GM CREW CAB
 2004 - 2008 FORD F150 SUPER CREW/XCAB
 DUAL FORD F250/250 2000 - CURRENT SUPER DUTY (Behind Seat)
 DUAL 10" PORTED FORD F150 2009 - 2018 + 2017 - 2018 F250/350
 TOYOTA TUNDRA 2014 - CURRENT CREW MAX
 TOYOTA TUNDRA DOUBLE CAB 2007 - CURRENT
 Dual 10 Crew Cab 1500/3500
 Dual 8 GM Crew Cab 2007-2019
 Dual 8 Ford F150 2009-2019 + F250/350 2017-2019
 4hole 8" Ported for GMC/Chevy 2007-Current Crew Cab
 4hole 8" Ported for Ford F150 Super Crew 2009-Current & Ford F250/350



QCHERO SERIES

CH102S 8" X 2 CUTOUTS, 2 X 3 5/8 COMPRESSION HORN CUTOUTS
 CH103S 10" X 2 CUTOUTS, 2 X 3 5/8 COMPRESSION HORN CUTOUTS
 All Boxes come with Speakon Cable



— Call for Quantity and Pallet Pricing and Additional Models —

Full Throttle Series High-Performance AGM Batteries

The Full Throttle Series batteries were designed from the ground up to handle the increasing demands of today's vehicles. Built with high-compression cells and a heavy-duty case, they stand strong in the face of shock and vibration. Pure-lead cells and thin-plate technology deliver reliable power, again and again, to meet the highest level of demand.

Full Throttle batteries fit the widest variety of vehicle needs and applications (Cars, trucks, motorcycles, marine, power sports, emergency responders and semi-trucks). From professional racing to serious vehicle enthusiasts, Full Throttle is the battery of choice. Tough, reliable, and built to last.



FT230

Capacity @ 20hr Rate: 20 Ah
Reserve Capacity @ 20hr Rate: 28 Min.

CCA	PHCA	HCA	MCA	WATTS
230	680	410	310	700

7.13" L x 3.03" W x 6.57" H



FT410

Capacity @ 20hr Rate: 28 Ah
Reserve Capacity @ 20hr Rate: 48 Min.

CCA	PHCA	HCA	MCA	WATTS
410	925	625	530	900

6.50" L x 6.93" W x 5.67" H



FT438-U1
Group U1

Capacity @ 20hr Rate: 35 Ah
Reserve Capacity @ 20hr Rate: 50 Min.

CCA	PHCA	HCA	MCA	WATTS
438	975	605	525	1000

7.72" L x 5.16" W x 7.56" H



FT560

Capacity @ 20hr Rate: 44 Ah
Reserve Capacity @ 20hr Rate: 80 Min.

CCA	PHCA	HCA	MCA	WATTS
1200	860	1200	725	1200

7.80" L x 6.54" W x 7.09" H



FT825-34
Group F34

Capacity @ 20hr Rate: 65 Ah
Reserve Capacity @ 20hr Rate: 135 Min.

CCA	PHCA	HCA	MCA	WATTS
825	1500	1200	1000	2000

10.28" L x 6.77" W x 8.19" H



FT850-94R
Group 94R/L4/H7

Capacity @ 20hr Rate: 85 Ah
Reserve Capacity @ 20hr Rate: 175 Min.

CCA	PHCA	HCA	MCA	WATTS
850	1888	1200	1070	2100

12.36" L x 6.85" W x 7.47" H



FT965-27
Group 27

Capacity @ 20hr Rate: 100 Ah
Reserve Capacity @ 20hr Rate: 205 Min.

CCA	PHCA	HCA	MCA	WATTS
965	1950	1380	1170	2350

12.09" L x 6.65" W x 9.33" H



FT1100-31
Group 31

Capacity @ 20hr Rate: 110
Reserve Capacity @ 20hr Rate: 230 Min.

CCA	PHCA	HCA	MCA	WATTS
1100	2200	1560	1360	2500

12.99" L x 6.81" W x 9.33" H