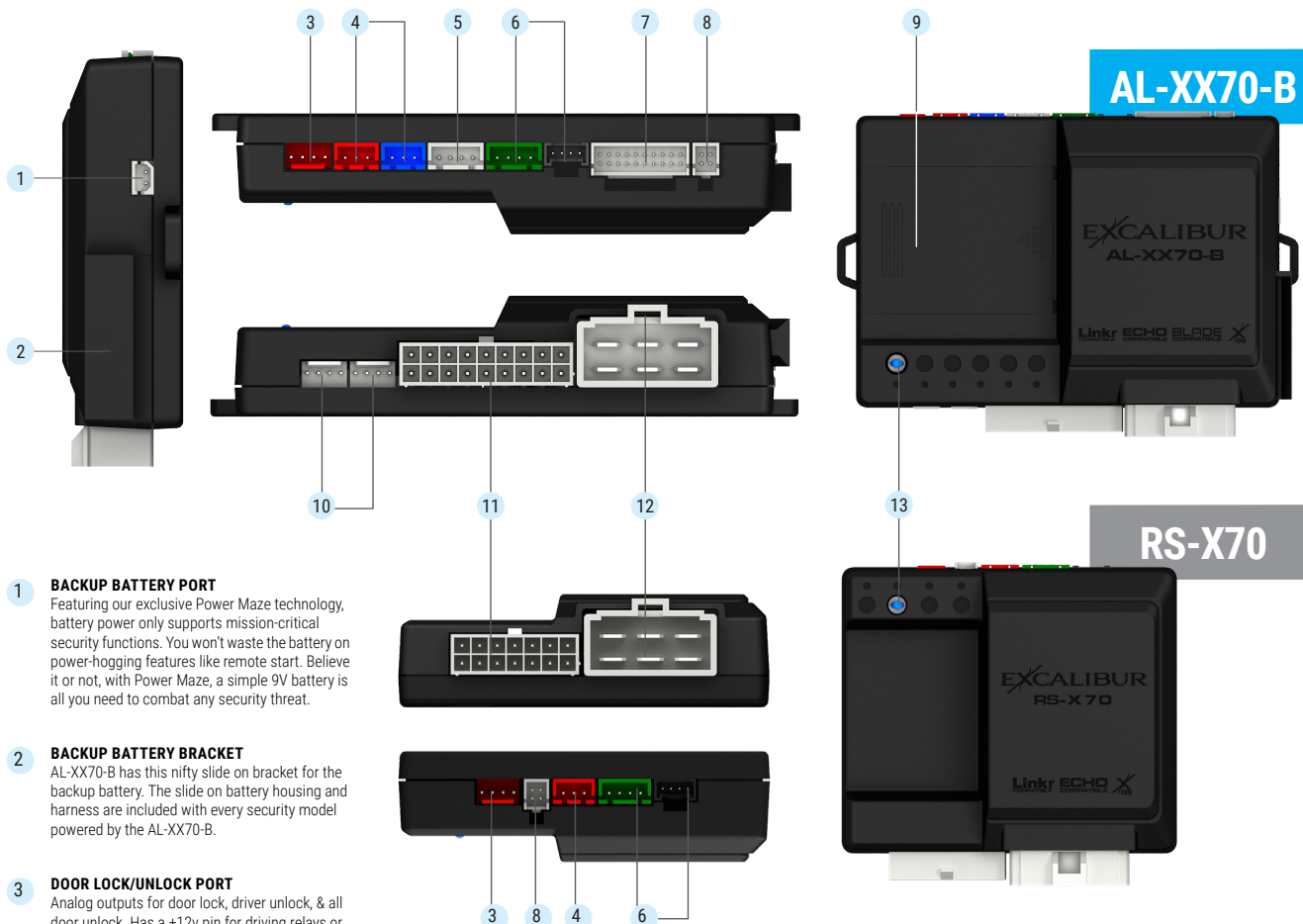


## EXCALIBUR REMOTE START & SECURITY PERFECTED

## REMOTE START PERFECTED



### 1 BACKUP BATTERY PORT

Featuring our exclusive Power Maze technology, battery power only supports mission-critical security functions. You won't waste the battery on power-hogging features like remote start. Believe it or not, with Power Maze, a simple 9V battery is all you need to combat any security threat.

### 2 BACKUP BATTERY BRACKET

AL-XX70-B has this nifty slide on bracket for the backup battery. The slide on battery housing and harness are included with every security model powered by the AL-XX70-B.

### 3 DOOR LOCK/UNLOCK PORT

Analog outputs for door lock, driver unlock, & all door unlock. Has a +12v pin for driving relays or other analog adapters like the DLR-U

### 4 REMOTE START SATELLITE PORT(S)

4 analog outputs for several options to add extra or custom functions. AL-XX70-B has 3 programmable outputs. The RS-X70 has 2 programmable outputs. All have a +12v pin for driving relays or bypass modules.

### 5 WHITE 4-PIN AUX PORT

This port provides OEM alarm arm/disarm control along with remote start activation input and 3RD channel out. These functions are separated from the main harness since they are supported over data in most vehicles. Yep, cleaner install.

### 6 DUAL DATA PORTS

Both ports are physically matched to legacy (DBI) and modern (iDataLink) connectors. However, both support DBI or iDataLink protocols. Protocols are auto-detected during Vehicle Learn process or manually selectable.

### 7 BLADE HARNESS PORT

This is where you connect the harness included with any OmegaLink BLADE cartridge. It's also compatible with our line of T-harnesses.

### 8 70 SERIES ANTENNA/STATUS LIGHT PORT

This port supports any 70 series antenna module. Select any combination of 1-way/2-way and range you'd like. It also supports our push-button LED (included with the RS-170-B)

### 9 BLADE CARTRIDGE PORT

This is where the OL-BLADE-AL64 or OL-BLADE-TB is inserted to the AL-XX70-B. PCB shielding and precision locking guides makes it simple and secure.

### 10 DUAL ANALOG SENSOR PORTS

You can stack any 2 security sensors you'd like onto the AL-XX70-B.

### 11 SECONDARY HARNESS PORT

Our secondary harnesses feature 100% copper wire for maximum current capacity, increased flexibility, and longest possible performance life.

### 12 PRIMARY POWER HARNESS

Our primary harness supports four 20/30A vacuum sealed relays with 100% copper wire for the best possible performance in the industry. An optional low-current harness (P/N: H-RS6BLC) is also available (ask about our High Current > Low Current harness exchange program).

### 13 ONBOARD TEMPERATURE SENSOR

First introduced to the industry in our award winning 30 series remote start models. It provides low and high temp auto-start with selectable thresholds, temp readout on 2-way controllers, and auto-crank adjust for cold weather.

### Standard Features:

- Includes the OL-BLADE-AL-64 for all-in-one installer paradise!
- Dual data ports
- Vehicle learn mode
- Self-diagnoses
- Full security suite
- Random Horn Honk
- XL Pitstop



## 2-WAY CONFIRMING SYSTEMS

powered by AL-XX70-B

RECHARGEABLE

**AL-2075-3DB-L**

### Color OLED 2-Way Remote Start & Alarm System

Rechargeable, 2-Way  
Remote Start / Security  
with 3D Motion Sensing  
Includes Shock and Siren



**AL-1870-3DB**

### B&W LCD 2-Way Remote Start & Alarm System

Deluxe Remote Start / Security  
with 3D Motion Sensing  
Includes Shock and Siren



IMPROVED  
BATTERY LIFE

**AL-1775-3DB**

### LED 2-Way Remote Start & Alarm System

Deluxe Remote Start / Security  
with 3D Motion Sensing  
Includes Shock and Siren



powered by RS-X70

IMPROVED  
BATTERY LIFE

**RS-475-3D**

### 3000ft LED 2-Way

Deluxe Remote Start / Keyless Entry  
with 3D Motion Sensing  
- Alarm Equipped

**RS-276-3D**

### 3000ft LED 2-Way

Deluxe Remote Start / Keyless Entry  
with 3D Motion Sensing  
- Alarm Equipped



**ALARM  
EQUIPPED**

JUST ADD ANY COMPATIBLE  
SENSOR TO UPGRADE!

## EXCALIBUR REMOTE START & SECURITY PERFECTED

## 1-WAY / 4-BUTTON SYSTEMS

powered by AL-XX70-B

### AL-1670-B

#### 1500ft 4-Button 1-Way

Deluxe Remote Start / Security /  
Keyless Entry  
Includes Shock and Siren



### RS-375-3DB

#### 3000ft 4-Button 1-Way

Deluxe Remote Start / Keyless Entry  
with 3D Motion Sensing  
- Alarm Equipped  
- 2-Way Ready



powered by RS-X70

### RS-375

#### 3000ft 4-Button 1-Way

Remote Start / Keyless Entry  
- Alarm Equipped



### RS-370

#### 1500ft 4-Button 1-Way

Remote Start / Keyless Entry  
- Alarm Equipped



Make your installs a slam dunk  
with premium T-harnesses!  
See Chart On Following Pages

**ALARM  
EQUIPPED**

JUST ADD ANY COMPATIBLE  
SENSOR TO UPGRADE!

## EXCALIBUR REMOTE START & SECURITY PERFECTED

## 1-WAY / 1 + 1 BUTTON SYSTEMS

powered by AL-XX70-B

powered by RS-X70



**RS-272**

**1500ft 1+1-Button**  
Remote Start / Keyless Entry  
- Alarm Equipped



**RS-271**

**1500ft 1-Button**  
Remote Start / Keyless Entry  
- Alarm Equipped

**RS-170-B**  
Deluxe Remote Start /  
Security / Keyless Entry Platform  
*BUILD YOUR DREAM SYSTEM!*

**RS-170-B64**  
*INCLUDES SOL-BLADE-AL64!*



**ALARM  
EQUIPPED**

JUST ADD ANY COMPATIBLE  
SENSOR TO UPGRADE!



## EXCALIBUR REMOTE START & SECURITY PERFECTED

### ALL-IN-ONE DATA START - RS-170-B64

Powered by the godfather of all remote start modules, the AL-XX70-B, the RS-170-B64 is the foundation for building the system of your dreams. It's compatible with RK series remote kits, Linkr smartphone control, sirens, sensors, and OmegaLink T-Harnesses, From add-on start (LOCK, LOCK, LOCK from OEM remote), to aftermarket keyless start, to a full-blown LEGENDARY security / convenience package, the RS-170-B64 is a one-stop platform. Stop choosing between what is or isn't compatible.

- Includes the OL-BLADE-AL-64 for all-in-one installer paradise!
- Supports 3x LOCK remote start (via data or analog)
- Powered by the AL-XX70-B
- Compatible with all OL-HRN-RS T-harnesses
- Includes high current harness and all supporting harnesses for hard-wire installs
- Includes new push-button LED/Valet
- Supports all 70 series remote kits
- Supports all 70 series remotes simultaneously:  
1-button, 1+1 button, 4-button, 2-way, etc



### 3000FT REMOTE KITS FOR 70 SERIES & OMEGALINK REMOTE STARTS

Direct plug-into ANY 70 series Excalibur remote start, OmegaLink Data Start, iDataLink Data Start, or Fortin EVO Data Start. Backed by our legendary Limited Lifetime Warranty. All RFK Kits have a 3,000ft max range. Each kit includes a 2-way ready antenna module, with built-in status light and valet button, harness, batteries, and a Limited Lifetime Warranty on all components!



RFK-42-SST



RFK-32-SST



RFK-22-SST



RFK-12-SST

<b>RFK-42-SST</b>	Includes one 2-way remote and one 1-way remote, indicates engine run time (2-way only), multi-car support (2-way only), low vehicle battery alert (2-way only), and OEM alarm alert (2-way only). Durable chrome metal frames. Leather texture back case.
<b>RFK-32-SST</b>	Includes two 1-way remotes, durable chrome metal frames, leather texture back case, 2-way ready - just add remote!
<b>RFK-22-SST</b>	Includes one 2-way remote and one 1-way remote, indicates engine run time (2-way only), low vehicle battery alert (2-way only), and OEM alarm alert (2-way only). Supports Lock, Unlock, and Start/Stop. Programmable for Unlock only. Durable chrome metal frames.
<b>RFK-12-SST</b>	Includes two 1-way remotes, durable chrome metal frames, supports Lock, Unlock, and Start/Stop, Programmable for Unlock only, 2-way ready - just add remote!

### SECURITY UPGRADE FOR RS-170-B64



#### AU-SEC

##### Dual Zone Shock & 6-Tone Siren Pack

- AU-84TDPB Magnetic resonance data shock for unbeatable impact detection.
- AU-73M Miniature high output 6-tone siren
- Upgrade ANY Excalibur 70 Series remote start with this simple kit.
- Upgrade the OL-RS-BA integrated remote start/bypass system with ease

## EXCALIBUR REMOTE START & SECURITY PERFECTED

## T-HARNESS SOLUTIONS



These T-Harnesses are compatible with any Excalibur remote start. These are built to OEM or better quality standards and are made with 100% copper wire for maximum current delivery and reliability. These plug-in harnesses provide remote start critical connections and help you avoid straining sensitive data wires or compromising high current circuit integrity. You can even adapt these to ANY remote start brand using FlashLogic, iDataLink BLADE or ALCA modules.

- Get OmegaLink install convenience AND Excalibur features!
- Use what's already on your shelf!
- Connect directly to the BLADE port on the AL-XX70-B
- Includes an adapter for using the OL-MDB-ALL with ANY system

	Model	Discription	RS Firmware Support
Chrysler	<b>OL-HRN-RS-CH4</b>	Plug-in T-Harness for Chrysler Group of vehicles from 2008 and up, including TipStart.	
	<b>OL-HRN-RS-CH5</b>	Plug-in T-Harness for Chrysler Group of vehicles from 2005 and up, including standard key.	
	<b>OL-HRN-RS-CH7</b>	Plug-in T-Harness for Chrysler Group of vehicles from 2011 and up, including Push-To-Start models.	✓
Ford	<b>OL-HRN-RS-FM2</b>	Plug-in T-Harness for Ford Group of vehicles from 2006 and up, including 40-bit keys.	
	<b>OL-HRN-RS-FM3</b>	Plug-in T-Harness for Ford Group of vehicles from 2006 and up, including 80-bit keys.	
	<b>OL-HRN-RS-FM8</b>	Plug-in T-Harness for Ford/Lincoln Group of vehicles from 2013 and up, including Push-To-Start models.	✓
GM	<b>OL-HRN-RS-GM8 NEW</b>	Plug-in T-Harness for GM vehicles Push-To-Start from 2010 and up.	✓
	<b>OL-HRN-RS-GM10</b>	Plug-in T-Harness for GM "SWC" Group of full-size vehicles from 2006 and up.	
	<b>OL-HRN-RS-GM12</b>	Plug-in T-Harness for all GM7 vehicles, and GM 'flip-key' and standard key vehicles from 2017 and up.	
Honda Acura	<b>OL-HRN-RS-HA3</b>	Plug-in T-Harness for Honda/Acura standard key vehicles from 2008 and up.	
	<b>OL-HRN-RS-HA6</b>	Plug-in T-Harness for Honda/Acura Push-To-Start vehicles from 2013 and up.	
	<b>OL-HRN-RS-HA7</b>	Plug-in T-Harness for Honda/Acura Push-To-Start vehicles from 2014 and up.	
Hyundai Kia	<b>OL-HRN-RS-HK</b>	Plug-in T-Harness for Hyundai/Kia Group of vehicles from 2008 and up,. Covers main ignition harness connections only since most US vehicles are not equipped with immobilizer.	
Mazda	<b>OL-HRN-RS-MA3</b>	Plug-in T-Harness for Mazda Push-To-Start vehicles from 2013 and up.	
Nissan Infiniti	<b>OL-HRN-RS-NI3</b>	Plug-in T-Harness for Nissan/Infiniti Push-To-Start vehicles from 2013 and up.	
	<b>OL-HRN-RS-NI4</b>	Plug-in T-Harness for Nissan/Infiniti standard key vehicles from 2004 and up.	
	<b>OL-HRN-RS-NI5</b>	Plug-in T-Harness for Nissan/Infiniti Push-To-Start vehicles from 2007 and up.	
	<b>OL-HRN-RS-NI8</b>	Plug-in T-Harness for Nissan/Infiniti Group of vehicles from 2014 and up.	✓
Toyota Scion	<b>OL-HRN-RS-TL5</b>	Plug-in T-Harness for Toyota/Scion standard key vehicles from 2010 and up.	
	<b>OL-HRN-RS-TL6</b>	Plug-in T-Harness for Toyota/Lexus Push-To-Start vehicles from 2010 and up.	✓
	<b>OL-HRN-RS-TL7</b>	Plug-in T-Harness for Toyota/Lexus Push-To-Start vehicles from 2018 and up.	✓



### OL-MDB-ALL


#### RS FIRMWARE SUPPORT

Select models support using the OL-MDB-ALL, FL-CAN, or ALCA as a standalone "3X Lock" remote start using "RS firmware". You can even add Excalibur RFK kits or Linkr smartphone control!



## SECURITY AND KEYLESS ENTRY SYSTEMS

We also offer everything you need to give your customers security-focused solutions and non-remote start convenience packages that are ideal for fleet upgrade applications or vehicles not equipped with factory keyless entry/security.

INDUSTRY FIRST!	Plug-in Security Upgrade For OmegaLink Data Starts!		INT'L Model with English/Spanish Guides	
	 <b>AL-1575</b> 3000ft 2-Way Deluxe Security / Keyless Entry	 <b>AL-560</b> 500ft 1-Way Deluxe Security / Keyless Entry	 <b>EXCAL-500+</b> 500ft 1-Way Deluxe Security / Keyless Entry	 <b>KE-170</b> 500ft 1-Way Deluxe Keyless Entry
FEATURES				
TECHNOLOGY				
Web Programmable	<input checked="" type="checkbox"/>			
Flashable xOS Firmware	<input checked="" type="checkbox"/>			
Dual Data Ports	<input checked="" type="checkbox"/>			
Smartphone Control Compatible	<input checked="" type="checkbox"/>			
SECURITY				
Driver Priority Unlock	<input checked="" type="checkbox"/>			<input checked="" type="checkbox"/>
Backup Battery Port	<input checked="" type="checkbox"/>			
Plug-in Security Upgrade For OmegaLink and EVO Data Starts	<input checked="" type="checkbox"/>			
Starter Interrupt	Relay Included	Relay Included	Relay Included	Output Only
Normally Closed Trigger Loop				
Multi-Tone Mini Siren	<input checked="" type="checkbox"/>	<input checked="" type="checkbox"/>	<input checked="" type="checkbox"/>	
Dual Zone Shock Sensor	AU-84Tn Magnetic Sensor	AU-84TM Piezo Sensor	AU-84TM Piezo Sensor	
Backup Battery Port	<input checked="" type="checkbox"/>			
Passive Arming/Locking	<input checked="" type="checkbox"/>	<input checked="" type="checkbox"/>	<input checked="" type="checkbox"/>	<input checked="" type="checkbox"/>
Remote Panic	<input checked="" type="checkbox"/>	<input checked="" type="checkbox"/>	<input checked="" type="checkbox"/>	<input checked="" type="checkbox"/>
Status Light and Valet Button	Built Into Antenna	LED/Valet Push Button Combo	LED/Valet Push Button Combo	LED/Valet Push Button Combo
CONVENIENCE				
Keyless Entry and Trunk Release	<input checked="" type="checkbox"/>	<input checked="" type="checkbox"/>	<input checked="" type="checkbox"/>	<input checked="" type="checkbox"/>
Auxiliary Outputs	3	1	1	1
Flashing Light Output(s)	(+) and (-)	(+) and (-)	(+) and (-)	(+) and (-)
Domelight Supervision	<input checked="" type="checkbox"/>	<input checked="" type="checkbox"/>	<input checked="" type="checkbox"/>	<input checked="" type="checkbox"/>



## VEHICLE SPECIFIC DATA START KIT

The **Omegalink** line of Remote Start, Vehicle Specific Data Start kits and Transponder/Door lock Interface modules are the most advanced and comprehensive line-up in the Industry today. The program consists of three separate product offerings, designed to meet the needs of every Security and Remote Start installation for today's complex vehicles. The entire **Omegalink** line-up was developed in conjunction with Automotive Data Solutions (ADS) and brings together the advanced technology of ADS with the core security and remote start features of the **Omega** product lines. OmegaLink is the gateway to the vehicle's communication network – the best in vehicle integration.



**OL-RS-BA**



**OL-RS-BMZ**



**OL-RS-VWA**

**COMPATIBLE WITH  
EXCALIBUR 'RFK' REMOTE KITS  
& OMEGALINK 'OL-RF REMOTE KITS**

<b>T-Harnesses For The OL-RS-BA</b> - The OL-RS-BA compatible T-Harness program allows you to mix and match T-Harness kits with a single module.	
<b>OL-ADS-THR-CH4</b> <b>OL-ADS-THR-CH5</b> <b>OL-ADS-THR-CH12</b>	For select Chrysler Group vehicles from 2005 and up: Standard Key ( <b>CH5</b> ), TipStart ( <b>CH4</b> ), and Push-to-Start models ( <b>CH10/CH12</b> ).
<b>OL-ADS-THR-F01</b>	For select Ford group vehicles from 2006 and up, including standard 40-bit and 80-bit keys ( <b>F01</b> ).
<b>OL-ADS-THR-FM8</b>	For select, Ford/Lincoln models from 2013 and up, including Standard Key and Push-To-Start models ( <b>FM8</b> ).
<b>OL-ADS-THR-GM2</b> <b>OL-ADS-THR-GM10</b> <b>OL-ADS-THR-GM12</b> <b>OL-ADS-THR-GM13</b> <b>OL-ADS-THR-GM14</b> <i>COMING SOON</i>	For select GM SWC models 2004 to 2012 ( <b>GM2</b> ), GM 'flip-key' and Standard Key models 2010 and up ( <b>GM7</b> ), GM 'SWC' full-size models 2006 and up ( <b>GM10</b> ), GM Push-to-Start models 2010 and up ( <b>GM13</b> ), GM SWC models 2020 and up ( <b>GM14</b> ).
<b>OL-ADS-THR-HA2</b> <b>OL-ADS-THR-HA3</b> <b>OL-ADS-THR-HA8</b> <b>OL-ADS-THR-HA9</b> <b>OL-ADS-THR-HA10</b>	For select Honda/Acura Standard Key models from 2001 and up ( <b>HA2</b> ), Honda/Acura Standard Key models from 2008 and up ( <b>HA3</b> ), Honda/Acura Push-to-Start models 2013 and up ( <b>HA6/HA9</b> ), Honda/Acura Push-to-Start models 2014 and up ( <b>HA7/HA10</b> ). Honda Push-to-Start models 2016 and up ( <b>HA8</b> ).
<b>OL-ADS-THR-HK3</b> <b>OL-ADS-THR-HK4</b> <b>OL-ADS-THR-HK5</b> <b>OL-ADS-THR-HK6</b> <b>OL-ADS-THR-HK7</b> <b>OL-ADS-THR-HK8</b> <b>OL-ADS-THR-HK9</b>	For select Kia/Hyundai Push-To-Start models from 2011 and up ( <b>HK3</b> ), select Kia/Hyundai Push-to-Start models from 2015 and up ( <b>HK4</b> ), select Hyundai/Kia Standard Key models from 2006 and up ( <b>HK5</b> ), select Kia/Hyundai Push-To-Start models from 2018 and up ( <b>HK6</b> ), select Kia/Hyundai Push-to-Start models from 2016 and up ( <b>HK7</b> ), select Kia/Hyundai Push-to-Start models from 2017 and up ( <b>HK8</b> ), select Kia Push-to-Start models from 2014 and up ( <b>HK9</b> ).
<b>OL-ADS-THR-MA3</b> <b>OL-ADS-THR-MA6 - NEW</b>	For select Push-To-Start Toyota/Scion models from 2013 and up ( <b>MA3</b> ), Push-To-Start Toyota/Scion models from 2019 and up ( <b>MA6</b> ).
<b>OL-ADS-THR-NI3</b> <b>OL-ADS-THR-NI4</b> <b>OL-ADS-THR-NI5</b> <b>OL-ADS-THR-NI10 - NEW</b>	For select Nissan/Infiniti Push-to-Start models from 2013 and up ( <b>NI3</b> ), Nissan/Infiniti Standard Key models from 2004 and up ( <b>NI4</b> ), Nissan/Infiniti Push-to-Start models from 2007 and up ( <b>NI5</b> ), Nissan/Infiniti Push-to-Start models from 2018 and up ( <b>NI10</b> ).
<b>OL-ADS-THR-TL5</b> <b>OL-ADS-THR-TL7</b> <b>OL-ADS-THR-TL10</b>	For select Toyota/Scion Standard Key models from 2010 and up ( <b>TL5</b> ), Toyota/Lexus Push-To-Start models 2009 and up ( <b>TL7</b> ), Toyota/Lexus Push-To-Start models 2018 and up ( <b>TL10</b> )..
<b>OL-ADS-THR-SU1 - NEW</b> <b>OL-ADS-THR-SU2 - NEW</b>	For select Subaru Standard Key models from 2017 and up ( <b>SU1</b> ), Subaru Push-To-Start models from 2017 and up ( <b>SU2</b> ).
<b>OL-ADS-AHR-PWR</b>	The High Current (HC) harness is used for remote start applications.
<b>T-Harnesses For The OL-RS-BMZ</b> - Fully integrated remote start for Mercedes, Mini, & BMW vehicles.	
<b>OL-ADS-THR-BM1</b>	For select BMW/Mini models 2005-2016.
<b>OL-ADS-THR-BZ1</b> <b>OL-ADS-THR-BZ2</b> <b>OL-ADS-THR-BZ3</b> <b>OL-ADS-THR-BZ4</b>	For select Mercedes-Benz models from 2006-2013 ( <b>BZ1</b> ), select Mercedes-Benz models from 2016 and up ( <b>BZ2</b> ), select Mercedes-Benz models from and 2008 and up ( <b>BZ3</b> ), and select Mercedes-Benz models 2012-2014 ( <b>BZ4</b> ).
<b>T-Harnesses For The OL-RS-VWA</b> - Fully integrated remote start for VW, AUDI, and BENTLEY models.	
<b>OL-ADS-THR-AU2</b> <b>OL-ADS-THR-AU3</b>	For select Volkswagen/Audi models from 2008 to 2018 ( <b>AU2</b> ), select Audi/Porsche models from and 2008 and up ( <b>AU3</b> ) - works with OL-RS-BA and OL-RS-VWA.
<b>OL-ADS-THR-VW1</b> <b>OL-ADS-THR-VW2- NEW</b>	For select Volkswagen/Audi models from 2006 and up ( <b>VW1</b> ), select Volkswagen/Audi models from 2019 and up ( <b>VW2</b> ) - works with OL-RS-BA and OL-RS-VWA.

Lookup the latest vehicle compatibility at [www.OmegaWeblink.com](http://www.OmegaWeblink.com)

## Omegalink REMOTE START DATA MODULES WITH CUSTOM T-HARNESS



The Omegalink Data Start Modules/ Custom T-Harness kits will allow you to remote start vehicles from the OEM keyless entry transmitter to create an affordable "factory like" remote start system, eliminating the need for a traditional remote start system. Please note that some systems require an optional RF kit to control remote start functions. Optional RF kits and Linkr Telematics units can be added for increased operating range.

### DATA START SYSTEMS

- Enables remote start from factory key fob (3XLOCK) on most models
- Advanced, fully integrated remote start technology
- No need to relinquish or purchase a costly key
- 'Plug and Play' wiring harness for non-invasive installation
- Compatible with long range remote controls and smart phone solutions sold separately

**COMPATIBLE WITH EXCALIBUR 'RFK' REMOTE KITS  
& OMEGALINK 'OL-RF REMOTE KITS**

### OEM INTEGRATION - PRODUCT INFORMATION

MAKE	PARTNUMBER	YEAR / APPLICATIONS	MASTER CARTON QTY	RF UPGRADEABLE	LINKR UPGRADEABLE
Mercedes-Benz Dodge Freightliner	<b>OL-RS-BZ1</b>	2006 - 2014 / 240+ Models	8	Yes	N/A
	<b>OL-RS-BZ2</b>	2003 - 2015 / 300+ Models	8	Yes	N/A
	<b>OL-RS-BZ3</b>	2008 - 2014 / 215+ Models	8	Yes	N/A
	<b>OL-RS-BZ4</b>	2012 - 2015 / 30+ Models	8	Yes	N/A
Chrysler Dodge Ram Jeep	<b>OL-RS-CH4</b>	2007 - 2017 / 215+ Models	8	Yes	Yes
	<b>OL-RS-CH5</b>	2005 - 2017 / 190+ Models	8	Yes	Yes
	<b>OL-RS-CH10</b>	2011 - 2021 / 250+ Models	8	Yes	Yes
	<b>OL-RS-CH12</b>	2011 - 2017 / 185+ Models	8	Yes	Yes
Ford Lincoln Mercury Mazda	<b>OL-RS-F01</b>	2006 - 2017 / 315+ Models	8	Yes	Yes
GM Chevrolet Cadillac Buick	<b>OL-RS-GM2</b>	2004 - 2012 / 100+ Models	8	Yes	Yes
	<b>OL-RS-GM7</b>	2010 - 2022 / 210+ Models	8	Yes	Yes
	<b>OL-RS-GM10</b>	2006 - 2017 / 515+ Models	8	Yes	Yes





Lookup the latest vehicle compatibility at [www.OmegaWeblink.com](http://www.OmegaWeblink.com)



## OMEGALINK DOORLOCK & IMMOBILIZER BYPASS MODULES

OMEGALINK Transponder and door Lock Interface Modules are the gateway to the vehicle's data networks. They're available in Doorlock/ Convenience+Bypass models and Bypass Only models as external module or BLADE cartridges for the Excalibur AL-XX70-B remote start platform.

PART NUMBER	DESCRIPTION
OL-BLADE-AL64	<b>CAN Door Lock &amp; Transponder Interface With KILON Technology</b> • Plug-in Cartridge • Now included in the RS-170-B64 The OL-BLADE-AL-64 is a CAN BUS interface control module that has all OmegaLink Applications built into a slide-in cartridge. This solution allows for a cleaner installation, and is only compatible with Omega "BLADE" units.
OL-BLADE-TB	<b>CAN Transponder Interface With KILON Technology</b> • Plug-in Cartridge The OL-BLADE-TB is a Flashable Transponder bypass interface built into a slide-in cartridge. This solution allows for a cleaner installation, and is only compatible with Omega "BLADE" units.
OL-MDB-ALL	<b>CAN Door Lock &amp; Transponder Interface With KILON Technology</b> Flashable Door lock & Bypass interface module. The OL-MDB-ALL also enables remote start from the factory key fob (3X LOCK) for many vehicles. Compatible with long range remote controls and smart phone solutions sold separately.
OL-MIB-KO	<b>Transponder Data Interface</b> Flashable Transponder bypass interface (NOTE: Bypass only).
OL-MDB-GM1	<b>Door Lock / Convenience With GM &amp; Honda Transponder Interface</b> Flashable Door lock & Bypass interface module. It also controls various convenience features and supports transponder interface where applicable.
OL-ADS-TBSL-VW1	<b>Transponder Data Interface For Audi/VW Vehicles</b> Web-programmable for multiple vehicle makes and models from 2006 to present. Features a simple installation with most aftermarket remote car starter systems.

ACCESSORIES			
<b>PASS-4 "KEY IN THE BOX"</b> <b>UNIVERSAL TRANSPONDER INTERFACE KITS</b>  Universal Remote Start Transponder Interface with key sense shut-off for most vehicles (key required). New larger case capable of holding large headed keys with integrated OEM remote.	<b>OL-HRN-LINKR-ALL</b>  This adapter is required when adding Linkr-LT series smart-phone control modules to an OL-MDB-ALL using "RS Firmware"	<b>OL-ADSHRNSM01</b>  Adapter harness for DEI SmartStart for Data Start Systems (10 per pack)	<b>OL-ADSHRNSXL02</b>  Adapter harness for DEI RF Kits for Data Start Systems (10 per pack)

## NEXT GEN WEBLINK & KILON INTERFACE



**NEW!**

### OL-USB-HUB

- Flashes all Weblink-compatible products
- Works with Weblink Desktop on PC and MAC
- Allows for streamlined workflow
- Updateable for future products and services
- Built-in key reader which expands KILON's potential and allows front-door cracks



**NEW!**

### OL-RFID1

- Clones the OEM fob and communicates directly with the RFID module in the vehicle.
- Included in certain T-harness models.
- External accessory allows compatibility with blade-equipped starters and analog starters using external interface module.
- Requires OL-USB-HUB to program.

## REMOTE KITS FOR 'OL-RS' SYSTEMS

3000FT RF KITS CONNECTS TO OMEGALINK, IDATALINK, AND FORTIN EVO ONE



**OL-RF-52-SST**



**OL-RF-42-SST**



**OL-RF-32-SST**



**OL-RF-15-SST**



**OL-RF-12-SST**

<b>OL-RF-52-SST</b>	Includes one 2-way, 5 button LCD remote, and one 1-way, 5 button remote, 3000ft max range. Supports lock, unlock, start, stop, trunk release, and AUX functions control.
<b>OL-RF-42-SST</b>	Includes one 2-way, 5 button remote, and one 1-way, 5 button remote, 3000ft max range. Supports lock, unlock, start, stop, trunk release, and AUX functions control.
<b>OL-RF-32-SST</b>	Includes two 1-way, 5-button remotes, 3000ft max range. Supports lock, unlock, trunk release, start, and stop control.
<b>OL-RF-15-SST</b>	Includes one 2-way, 1 button remote, and one 1-way, 1 button remote, 3000ft max range. Supports lock, unlock, start, and stop control.
<b>OL-RF-12-SST</b>	Includes two 1-way, 1 button remote, 3000ft max range. Supports lock, unlock, start, and stop control.



## OMEGA PROLINE

### KEYLESS ENTRY



#### REC-43T+

- Keyless Entry
- Trunk release output
- 3rd channel output
- Up to 500ft of range
- 100% copper harnesses

## OMEGA PROLINE KEYLESS ENTRY

### SECURITY ENTRY ALARM UPGRADE

**NOW COMPATIBLE WITH  
REST-AT-NOTHING  
SYSTEMS! SHOCK  
SENSOR INCLUDED!**



#### AL-100-DP

- OEM Keyless Entry Alarm Upgrade
- Arms and disarms from OE remote via wire inputs or data port
- AU-84Tn dual zone shock included
- Data port for integration modules
- Ignition activated lock/unlock
- Passive arming
- Back-up battery port
- 3rd channel output (press lock, unlock, lock - programmable)
- Dual zone sensor port
- Anti-carjack modes

## K-9 CAR ALARM

### DELUXE SECURITY - DATA START UPGRADE



#### K9-CLASSIC-3

- 1500ft 4-Button 2-Way
- Deluxe Security
- Low/High Temp Auto Start (Optional Data Start Req'd)
- Low Voltage Auto Start (Optional Data Start Req'd)
- Simultaneous Horn Honk & Siren
- Up to 4 aux outputs

## PREMIUM SECURITY

### FULL FEATURED SECURITY



#### K9-MUNDIAL-6

- 500ft of Range
- Changeable transmitter inserts included
- 1 aux output
- Siren or horn output
- Pos. and Neg. light output
- 6-tone siren
- AU-84TM shock sensor
- Bright blue status light
- English/Espanol manual

#### Standard Features:

- 1 dual zone sensor port
- Dual zone shock sensor included
- Starter interrupt relay and socket
- Keyless entry
- Trunk release output
- Flashing light relay onboard
- Anti-hijack modes
- Carjacking protection
- Ignition controlled doorlocks
- Passive arming/locking
- 100% copper harnesses

## K-9 CAR ALARM

## SS3 PLATFORM

### SS3 Platform



### All items equipped with:

- Silent Arm/Disarm
- Human Panic Horn Honk Alert
- AU-84Tn Dual Zone Impact Sensor Included
- AU-73M Mini 6-Tone 20-Watt Siren
- Bright blue status light
- Supports Idatalink and DBI Protocols
- English/Espanol manual

### DELUXE SECURITY



#### MUNDIAL-SSLA-3

- 500ft 4-Button 1-Way
- Full-featured Security and Keyless Immobilizer Mode
- Programmable Brake Lock
- 18 Programmable Features

**FEATURING BRAKE  
LOCK CAPABILITY!**

## K-9 CAR ALARM

## FULL SECURITY PLATFORM

### SS2 Platform

### All items equipped with:



- Up to 500ft of range
- Up to 3 aux outputs
- Siren and horn outputs
- 6-tone siren included
- AU-84TM shock sensor
- 15 programmable features
- Bright blue status light
- English/Espanol manual
- 100% copper harnesses
- Anti-carjacking modes

### powered by SS2 Platform

#### K9-Mundial-SSA-LA

#### 500ft 4-Button 1-Way

2 Auxiliary Channel Output  
Starter Kill Relay and Socket  
Shock Sensor with Pre-warning  
Port For External Dual Zone  
Flashing Light Outputs



#### MUNDIAL-SS-LA

#### 500ft 4-Button 1-Way

Full-featured Security and Keyless  
Immobilizer Mode  
18 Programmable Features



#### MUNDIAL-SSR-LA

#### 500ft 4-Button 1-Way

Full-featured Security and Keyless  
Immobilizer Mode  
18 Programmable Features



#### K9-Mundial-SSX

#### 500ft 4-Button 1-Way

Silent Arm/Disarm  
2-Stage Disarm  
ATV™  
Easy Valet



### 140 Platform

### All items equipped with:



- 8 programmable features
- Bright blue status light
- Siren and horn outputs
- 6-tone siren
- Built-in dual zone shock sensor
- English/Espanol manual

### powered by 140 Platform

#### K9-170-LA

#### 500ft 4-Button 2-Way

Keyless Entry / Security  
1 auxiliary output



#### K9-160-LA

#### 500ft 4-Button 2-Way

Keyless Entry / Security  
1 auxiliary output



#### K9-150-LA

#### 500ft 4-Button 1-Way

Keyless Entry / Security  
1 auxiliary output



#### K9-140-LA

#### 500ft 4-Button 1-Way Keyless

Entry / Security  
1 auxiliary output





## SECURITY ACCESSORIES

### RELAYS & SOCKETS

#### **AU-7 SPDT 30/40A Relay**

General Purpose 30/40amp Single Pole Double Throw Relay.

#### **AU-7-MINI Miniature Prewired SPDT 20/30 Relay**

Mini relay with vacuum sealed construction for superior performance and longer life than standard relays. Prewired with 50cm long wires. Contacts have 18 AWG wires and coil triggers have 24 AWG wires. Ideal for extra ignitions, Ford parking lights, Kia/Hyundai style parking lights, extra ignitions, door locks, etc.

#### **AU-SOCKET Starter Interrupt Socket**

Pre-wired 3-wire relay socket for starter interrupt with 12" wires. (sold in bags of 5)

#### **AU-SOCKET-5 Pre-wired Relay Socket**

Universal pre-wired 5-wire relay socket with 12" wires. (sold in bags of 5)

### SIRENS

#### **AU-70CL4 High Volume Single/Multi-Tone Siren**

Standard six tone, 80 watt siren. Cut loop to change to single tone.

#### **AU-70SL Single/Multi-Tone Siren**

Standard six tone, 20 watt siren. Cut loop to change to single tone.

#### **AU-73M Multi-Tone Siren**

Ultra compact six tone, multi-tone siren. Cut loop to change to single tone.

### DOOR LOCKS/MISC

#### **DS-2.4 Economy Gun-Style Doorlock Actuator**

Converts manual doorlocks into power doorlocks for use with vehicle security systems. Two-wire reverse polarity operation; mounting hardware included.

#### **DLS Doorlock Relay Socket**

Pre-wired dual relay socket can be configured to operate 3-wire negative, 3-wire positive, and 5-wire reversal power doorlocking systems. Plugs into any Omega keyless entry system. Two SPDT relays are required.

#### **DLP-P3 Doorlock Output Inverter**

Pre-wired 3-pin doorlock plug converts negative doorlock outputs to positive doorlock outputs. Plugs into any Omega keyless entry system.

### SENSORS

#### **AU-46TD Dual Zone Digital Tilt Sensor**

This dual zone sensor features 4 selectable tilt angles to trigger the sensor. It can also be configured for 3 second or 45 second arming delay. It has a 2 color LED to indicate the pre-warn and hard trigger zones.

#### **AU-84TM Dual Zone Shock Sensor**

Miniature dual zone impact sensor that utilizes a piezo crystal element. Has independent zone adjustment and indicator lights. Plug in to any Omega system.

#### **AU-84TDPB Premium "DP" Dual Zone Magnetic Shock Sensor**

Has the same features and performance as the AU-84Tn but it can connect to the system's black data port to upgrade all "Virtual Alarm" and "Alarm Equipped" remote start models.

#### **AU-84Tn Premium Dual Zone Magnetic Shock Sensor**

The AU-84Tn is a dual zone impact sensor that utilizes state-of-the-art Magnetic Impact Technology. Has independent zone adjustment and indicator lights. Direct plug in to any Omega security system.

### SENSORS (CONTINUE)

#### **AU-85Tn Dual Zone Magnetic Shock and Glass Break Sensor**

Combines a broad spectrum impact sensor utilizing magnetic technology with an extra sensitive condenser microphone and sound discrimination circuit to detect glass tampering. Has independent zone adjustment and indicator lights. Direct plug in to any Omega security system.

#### **AU-94TM Miniature Dual Zone Proximity Sensor**

The AU-94TM is designed to provide both an internal (trigger) and external (pre-warn) zones of protection for the vehicle. Has independent zone adjustment and indicator lights. Direct plug in to any Omega security system.

#### **AU-NCT Normally Closed Trigger Sensor**

Detects normally closed triggers (like door triggers on many Ford vehicles) and is ideal for protecting belongings in vehicles, detecting trailer detachment, and more.

### SWITCHES & LED's

#### **22GT Toggle Style Valet Switch**

Latching toggle switch that mounts through a 1/4" hole.

(sold in bags of 5)

#### **22LC Surface Mount Valet Switch**

Momentary push button with an adhesive foam backing for mounting to just about any flat surface. (sold in bags of 5)

#### **24L Push Button Valet Switch**

Momentary push button switch that mounts through a 1/4" hole. Compatible with all Omega systems. (sold in bags of 5)

#### **AU-47 Pin Switch**

Adjustable BCD pin switch. (sold in bags of 10)

### BATTERIES

#### **BAT-23A**

12 volt replacement battery for Omega transmitters. (sold in bags of 5)

#### **BAT-27A**

12 volt replacement battery for Omega transmitters. (sold in bags of 5)

#### **BAT-CR-2016**

Thin profile, 3 volt, lithium transmitter battery. 2 required per transmitter. (sold in bags of 5)

#### **BAT-CR-2032**

Standard profile, 3 volt, lithium transmitter replacement battery for Omega transmitters. 1 required per transmitter. (sold in bags of 5)

#### **BAT-CR-2450**

Large profile, 3 volt, lithium transmitter replacement battery for Omega controllers. Up to 2 required per transmitter. (sold in bags of 5)

#### **BAT-CR-2025**

## AGGRESSOR »— AIR HORNS —«

**CHROME  
PLATED  
BRASS!**



**AH-300**

The AH-300 is our original 3 tone train horn assembly. It has 10.5", 14.5", and 15" trumpets that features chrome plated brass construction. It is fitted with a 12 VDC switching solenoid 1/2" valve. Air line capable of handling up to 150 PSI is also included with all necessary mounting hardware. The AH-300BLK is the same design but constructed out of steel with a corrosion resistant black coating.

**CHROME  
PLATED  
BRASS!**



**AH-D300+**

The AH-D300+ is the same as the AH-300 but has a detachable style construction. With the addition of our braided air lines, you can disassemble each trumpet and mount them remotely from the manifold. This allows for installation in the most challenging of vehicles. Also equipped with a 1/2" valve

**CHROME  
PLATED  
BRASS!**



**AH-250**

The AH-250 is the ideal kit for anything from a compact car to a monster truck! It includes our dual horn assembly with 12" and 10" horns and our "can" style compressor. It comes with all necessary hardware and air line for a complete installation.



**AH-300BLK**

The AH-300BLK is the same design as the AH-300 but constructed out of steel with a corrosion resistant black coating for the same performance at a competitive price!



**AC-2.0 MP**

The AC-2.0 is our largest capacity air compressor yet! For use with any of our air horn assemblies.

- Operates on 12 VDC
- 150 PSI Output
- 2.50 CFM @ 0 PSI/13.8 volts
- 2.0 Gallon Tank
- Stainless Steel Braided Hose



**AC-1.5 MP**

The AC-1.5 is our high output air compressor for use with any of our air horn assemblies.

- Operates on 12 VDC
- 110 PSI Output Tank
- 2.03 CFM @ 0 PSI/13.8 volts
- 1.5 Gallon
- Stainless Steel Braided Hose



**STR-F09**

Universal 2 bulb kit

- Includes 2 bulbs - white LED's
- Mount bulb in headlight or surface mount on any vehicle panel
- Low or high power selectable
- Operates on +12 volt power supply
- 18 different flashing patterns
- Includes shielded extension cable
- Multiple kits can be wired in parallel
- Upgrade existing analog strobe ballast

### STR-LED-BULB-W

- Replacement white bulb for STR-F09



## SMARTPHONE CONTROL

**Model:**

### LINKR-LT2



**Linkr**  
MOBILE  
from OMEGA

### Key Features:

- Control & Confirm LOCK, UNLOCK, START, STOP, TRUNK, & Aux Functions
- View the vehicle's current location
- Displays remote start remaining run time
- NEW run time extender feature restarts the engine run time!
- Shows door locked/unlocked status
- Displays vehicle voltage and Linkr network connection strength
- Direct plug-in to Excalibur 70 series remote starts
- Direct plug-in to OmegaLink RS kits
- Alarm trigger alert
- Install as stand alone tracker (Only GPS instant locate and alarm alert is available)
- Supports iDataLink, Posse, Fortin, & DBI/Smartstart protocols
- Includes the 1st year of service (\$39 USD for the following year)
- Works in the USA, Puerto Rico, and roams in Canada

**1st YEAR OF SERVICE INCLUDED!**  
**NEW 4G LTE SPEED!**  
COVER 99% OF YOUR CUSTOMER'S  
NEEDS FOR **HALF THE PRICE!**



**GET THE LINKR-LT  
APP WITH YOUR  
SHOP LOGO!**

**Model:**

### RFK6000

### Key Features:

- Connects via Bluetooth directly to the antenna and/or the long range remote
- True 2-way communication powered by LoRa™ technology
- Real-time Bluetooth® communication interaction with your smartphone with rapid response
- 2-way LED remote with over 1.5 miles of operating range
- Micro USB rechargeable Li-On battery (cable not included)
- Compatible with most digital remote start and security systems
- Compatible with android & iOS Smartphones - search "Connected SmartControl" in your app store.



**NO SERVICE COST!**  
**1.5 Mile RANGE SMARTCONTROL!**



**GET THE CONNECTED  
SMARTCONTROL APP WITH  
YOUR SHOP LOGO!**

## COMPATIBLE SYSTEMS

### OMEGA BRANDS

#### EXCALIBUR

- Excalibur 70 series  
(v1.4 FW or higher required)

#### OMEGALINK

- All "OL-RS" kits
- OL-MDB-ALL with RS Firmware

#### OMEGAEO

- OM-EVO-ALL with RS Firmware

#### CRIMESTOPPER

- RS-00  
(LINKR-LT2 Only)
- RSx-G5  
(LINKR-LT2 Only)
- SP402 / SP502  
(LINKR-LT2 Only)
- RSx-G6

### OTHER BRANDS

#### ADS iDataLink

- ALCA with RS Firmware
- HCx
- VWx
- BMx
- BZx
- AKX

#### ASTROSTART

- AF-D600

#### AUTOSTART

- ASD200
- ASD600

#### DIRECTED ELECTRONICS

- DBALL 2
- DB3
- 4X10 / 5X10
- DS4+

#### FORTIN ELECTRONICS

- EVO-ALL (LINKR-LT2 Only)
- EVO-ONE (LINKR-LT2 Only)

#### FIRSTTECH

- Compustar 7000 series
- Compustar 6000 series
- Compustar FT-xxx-DC
- Compustar FT-DC2 / FT-DC3

#### MIDCITY

- Midcity Smartkey Starter  
(RFK6000 Only)
- All Modules With ADS Telematics Port  
(Linkr Only)

Any System That Supports The iDataLink Telematics Protocol



MODEL: **LINKR-MBT**

**NEW!**

Model:

**LINKR-MBT**

**Key Features:**

- Bluetooth connection provides up to 200ft of high speed range.
- Quickly configure features on compatible systems
- Update system firmware while installed on compatible systems
- Control and Confirm LOCK, UNLOCK, START, STOP, TRUNK, and Aux Functions
- Displays remote start remaining run time
- Run time extender
- Shows door locked/unlocked status
- Displays vehicle module bluetooth signal strength
- Control and configure any Excalibur 70 series remote starts
- Control and configure any Crimestopper G6 series remote starts
- Control OmegaLink RS, FlashLogic, ADS data start kits (no programming)
- Uses iDatalink protocol and Omega diagnostics protocol
- No service contracts!



**SYSTEM COMPATIBILITY FOR LINKR-MBT**  
**OMEGA BRANDS**

**EXCALIBUR**

- Excalibur 70 series v1.6+ FW - Full Functionality

**OMEGALINK**

- All "OL-RS" kits - Control Only
- OL-MDB-ALL with RS Firmware - Control Only

**CRIMESTOPPER**

- RS-00 - Control Only
- RSx-G5 - Control Only
- SP402 / SP502 - Control Only
- RSx-G6 - Full Functionality

**Join our Team!**

**CAREER OPPORTUNITIES AVAILABLE**

Call Lesco or fax your resume



**LESCO DISTRIBUTING INC.**

1203 East Industrial Dr., Orange City, FL 32763

Sales: 800-444-8896

Local: 386-775-7244

2310 Foundation Drive, South Bend, IN 46628

Sales: 800-348-2888

Local: 574-251-4980

2134 NW 99th Ave, Doral, FL 33172

Sales: 800-327-2830

Local: 305-593-6131

1628 West Crosby Road, Suite 115, Carrollton, TX 75063

Sales: 800-527-2939

Local: 972-446-1605