

## 10" Dual Vented

### 10DQV

- SPL-Tuned 10" Dual Vented subwoofer enclosure designed for optimum bass response and low frequency reproduction.
- 3/4" High Grade MDF Construction for Ultimate structural rigidity and no-flex construction. • 48 Cubic Feet Net Volume internal air space per sub is ideal for high power subs tuned at 38Hz. • Recessed Side Panels increases structural integrity, eliminates unwanted flex and vibration.
- Enclosure Dimensions Subwoofer Mounting Depth: 15.5", Sub Cut Out: 9.25", Height: 14", Width: 30.25", Depth: 17", Tuning Frequency: 42Hz



## 10" Single Vented

### 10SQV

- Width: 16.25 • Height: 12.25
- Depth: 17 • Vent Width: 1.25
- Vent Height: 10.5 • Vent Depth: 13 • Gross Cubic Feet Per Side: 1.42 • Net Cubic Feet Per Side: 1.25 • HZ: 42



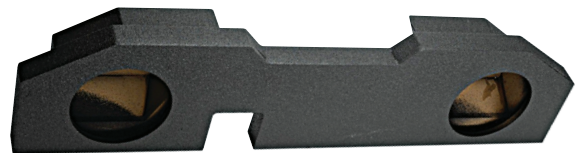
## 336 Watt Sealed Box Amplifier

### 300.1SBA

- RMS Power: 336 Watts @ 2 Ohms
- Unbalanced Low-Level RCA Inputs
- High Level 10 Volt Inputs • Selectable Amp Turn-On Selection With Remote • DC Input – Signal Sense • Adjustable Level Control at 0.2v – 6v • Bass Boost at 0dB – 12dB • Phase Control at 0 – 180 degrees
- Quick Connect Power/Remote/Ground Plug • Variable Crossover Adjustments at 40Hz – 200Hz • Visual Protection Circuit With DC Offset – Short Circuit – Thermal Over Load • Bass Remote With 3.5mm Bass Remote Cable



## Dual 10" Subwoofer Enclosure



### A202-10CP

- Designed specifically for 2002-2014 Dodge Ram Quad Cab Trucks • Premium carpeted finish • 3/4" Mounting Baffle
- Hardwood MDF construction • Rounded edges • Glued and Braced construction • Subwoofer mounting depth: 6.5"

## 10" Single Truck Sealed Enclosure - 1 Inch Faceplate

### E10ST

- 1" High Grade MDF Front Baffle for Ultimate structural rigidity and no-flex construction. • Enclosure Dimensions: Dimensions Sub cut out: 9.125", mounting depth: 5.25", Height: 15.25", Width: 19.625", Depth 1 (bottom): 8.25" Depth 2 (top): 5" • Recessed Side Panels increases structural integrity, eliminates unwanted flex and vibration.
- Premium OEM Grade Carpeting for factory look and durability.



## 12" Dual Sealed Enclosure

### E12D

- MDF Construction • Completely Carpeted Enclosure • 1" Speaker Baffles • Screwed Down Terminal Cups • Completely Glued & Braced
- 12" Dual Enclosure



## Vented Speaker Enclosure

### E12DV

- B Box Series 12" Dual Vented Enclosure with Divided Chambers • MDF Construction
- Completely Carpeted Enclosure • 1" Speaker Baffles



## 15" Dual Sealed - 1 Inch Faceplate

### E15D

- Pro Tuned 15" Dual sealed subwoofer enclosure designed for optimum bass response and low-frequency reproduction which is ideal for lower profile sound quality subwoofers.
- 1" High-Grade MDF Front Baffle for Ultimate structural rigidity and no-flex construction. • 2.1 Cubic Feet Net Volume internal air space per sub is ideal for tight accurate bass reproduction. Divided subwoofer chambers. • Enclosure Dimensions Sub Cut Out: 14.125", Mounting Depth: 15", Height: 15.75", Width: 35", Depth: 16.75"

