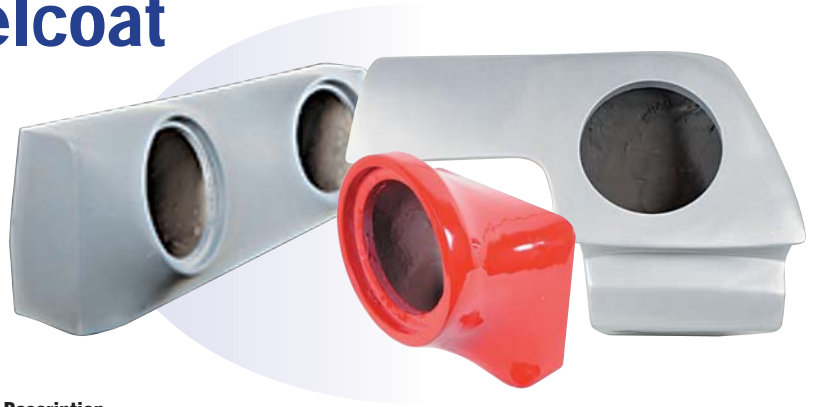




BASSFORMS

Custom Fit Gelcoat Enclosures...

Ready to Paint



Model	Description
General Motors	
BF110GMCREW	'04 + Crew Cab, 10" Port, behind Rear Seat
BF210AE	'01+ Avalanche, '02 - up Escalade Ext
BF300R	'05 + Chry 300, 12" Sealed, Right
BF300L	'05 + Chry 300, 12" Sealed, Left
Chrysler/Dodge	
BF212MAGR	'05 + Dodge Mag, 12" Sealed, Right
BF212MAGL	'05 + Dodge Mag, 12" Sealed, Left
BF212CHARGERR	'06 + Dodge Cha, 12" Sealed, Right
BF212CHARGERL	'06 + Dodge Cha, 12" Sealed, Left
BF212RAM	'02 + 2 - 12" Sealed, Rnd or Sq, Quad Cab
Ford	
BF38F150	'04 + F-150 C Cab or Ext. Cab, (3) 8" Sealed
BF210STANG	'05 + Two 10" Sealed, (R) or (L) Coupe - Conv.
BF110F25035006	'06 + F250 & F350, (1) 10" Sealed
BF110F150CREW	'04 + F150 Super, (1) 10" Ported, Up-Firing
BF112F2503500003	'00 - '03 F250 & F350, (1) 12" Ported
BF212F150	'04 + Ford F-150, C Cab, Seat Don't Lock
Universal Applications	
BF210	Two 10" Sealed, Most Vehicles
BF212	Two 10" Sealed, Most Vehicles
BF212SUV	Escalade, Yuk, Tahoe, Expedi., Armad, 2-12
BF112WRX	'00 +, One 12" Sealed, (L) Side, Subaru WRX
BF212GTIL or R	'06 - up, Two 12" Sealed, (R) or (L), VW GT