

powerbass®

POWERSPORTS

MOBILE

MARINE

2017







2017

TABLE OF CONTENTS

| | |
|---------------------------------------|----|
| Amplifiers | 06 |
| Subwoofers | 10 |
| Power Sports | 18 |
| Marine | 20 |
| Full Range Speakers | 22 |
| Coaxials | 24 |
| Components | 26 |
| Tweeters | 28 |
| Pro Audio & Competition | 30 |
| Toyota OEM Replacement Speakers | 34 |
| Loaded Sub Enclosures | 36 |
| Accessories | 40 |

APPENDIX

| | |
|----------------------------------|----|
| Amplifier Comparison Chart | 44 |
| Subwoofer Comparison Chart | 46 |
| Speaker Comparison Chart | 48 |



POWERBASS AMPLIFIERS

PowerBass amplifiers are engineered in the USA and are designed to give your speakers or subwoofers the power they demand for loud but clear sound packed with power and performance.

Our Amplifiers are designed to handle the most demanding systems down to the easy listener with technology ranging from Class D full range, Class D mono blocks, and even Class A/B circuitry. PowerBass has the right amp for every application for your car, motorcycle, boat, and off-road vehicles, making PowerBass the easy choice for your next audio system.

powerbass

powerbass

MONO BLOCK FEATURES

Precision Tuned Electronic Crossover

41-click rotary control allows you to exactly tune the crossover to match the subwoofers operating frequency

High Damping Control Circuit

provides accurate and tight bass with plenty of head room that gives the fine details in the music you listen to

High Efficiency SMD Circuit Technology

for higher efficiency and noise rejection

Ultra Low Current Draw With More Than

A 85% Efficiency Rating means less heat and more power in a small footprint amplifier

Dual Link Circuitry (2-ohm minimum)

enables 2 like amplifiers to be strapped for doubling the power to your subwoofers

Variable Remote Level Control allows you the audio pilot to add all the bass you want by the simple twist of a knob on the dash

Auto Turn-on Circuit eliminates the need to run extra wire for power on/off (High Level / Speaker Mode)

Optional High Level Adapter Available

Converts high level OEM radio to low level input [HL-AD2]

Blue LED Logo Lighting adds that custom touch to your install



FULL RANGE FEATURES

IR Full Range Class-D Design

this newest Class D technology allows for a small footprint that is highly efficient and boasts amazingly detailed sonic clarity

Precision Tuned Electronic Crossover

41-click rotary control allows you to exactly tune the crossover to match the speaker's operating frequency

High Damping Control Circuit

provides accurate and tight bass with plenty of head room that gives the fine details in the music you listen to

High Efficiency SMD Circuit Technology

for higher efficiency and noise rejection

Ultra Low Current Draw With More Than

A 85% Efficiency Rating means less heat and more power in a small footprint amplifier

Auto Turn-on Circuit eliminates the need to run extra wire for power on/off (High Level / Speaker Mode)

Optional High Level Adapter Available

Converts high level OEM radio to low level input [HL-AD2]

Blue LED Logo Lighting adds that custom touch to your install



IR Full Range Class D 4-ch Amplifier with Digital Sound Optimization Circuitry

IR International Rectifier

The XMA Series represents the very latest in Class D amplifier technology. It uses the new IR® (International Rectifier) platform which has been under development for the past several years. IR®, a leader in PWM circuit design, has worked in conjunction with PowerBass engineers to produce more stable power output, minimal RF interference and improved sound quality.

The benefits of this cooperative effort are many and include improved temperature, frequency, voltage regulation and drive capability to name a few. The result to the user is a all around improved product that will provide years of listening enjoyment.

| | |
|--------------------------|-------------------|
| Class D Monoblock | Max Power* |
| [1CH] XMA-3000D | 6000 watts |
| [1CH] XMA-2000D | 4000 watts |
| [1CH] XMA-1205D | 2400 watts |

| | |
|---------------------------|-------------------|
| Class D Full Range | 3200 watts |
| [5CH] XMA-5900IR | |
| [4CH] XMA-4250IR | 2000 watts |
| [2CH] XMA-2405IR | 1600 watts |
| [2CH] XMA-2200IR | 800 watts |



41 Click Precision Rotary Control

The 41-click rotary control allows you to exactly tune the crossover to match the speaker's operating frequency

*Max Power is an instantaneous measurement that occurs sporadically during musical peaks. Full specifications can be found in the back of the catalog.





Autosound ASA3 Amplifiers



| | |
|--------------------------|-------------------|
| Class D Monoblock | Max Power* |
| [1CH] ASA3-1500.1D | 3000 watts |
| [1CH] ASA3-1000.1D | 2000 watts |
| [1CH] ASA3-600.1D | 1200 watts |

| | |
|----------------------------|------------|
| Class A/B Monoblock | |
| [1CH] ASA3-600.1 | 1200 watts |
| [1CH] ASA3-400.1 | 800 watts |

| | |
|-----------------------------|------------|
| Class A/B Full Range | |
| [5CH] ASA3-1100.5 | 2200 watts |
| [5CH] ASA3-700.5 | 1400 watts |
| [4CH] ASA3-600.4 | 1600 watts |
| [4CH] ASA3-400.4 | 800 watts |
| [2CH] ASA3-800.2 | 1600 watts |
| [2CH] ASA3-600.2 | 1200 watts |
| [2CH] ASA3-400.2 | 800 watts |
| [2CH] ASA3-300.2 | 600 watts |
| [2CH] ASA3-200.2 | 400 watts |

CLASS D AMPLIFIERS

1-ohm Stable Class D Circuitry

Defeatable Lighted PowerBass Badge switches the lighted PowerBass logo on or off

Dual Link Capability links 2 like amplifiers together for double power

Variable Electronic Low Pass Crossover to customize the bass for your vehicle

Variable Electronic Sub-Sonic Filter to cut the power robbing signals that can not be reproduced or heard from you subwoofers

Variable Electronic Bass EQ that lets you get the most out of your subwoofers

Variable Remote Level Control (included) gives the listener the option of turning the subwoofer's output up or down

CLASS A/B AMPLIFIERS

2-ohm Stereo/4-ohm Mono Stable* for multiple connection versatility

Defeatable Lighted PowerBass Badge switches the lighted PowerBass logo on or off

MOSFET Power Supply for the most efficient and distortion free sound reproduction

Variable 12dB, High/Low Pass Electronic Crossover for infinite system applications

Variable Bass EQ that lets you get the most out of your subwoofers

Optional Remote Level Control gives the listener the option of turning the subwoofers up or down

*A/B Mono blocks are stable at 2-ohm minimum



Autosound ACS Amplifiers

| | |
|--------------------------|-------------------|
| Class D Monoblock | Max Power* |
| [1CH] ACS-1000D | 2000 watts |
| [1CH] ACS-500D | 1000 watts |

| | |
|---------------------------|-----------|
| Class D Full Range | |
| [4CH] ACS-4120 | 960 watts |
| [4CH] ACS-4090 | 720 watts |
| [2CH] ACS-2120 | 480 watts |

CLASS D MONO BLOCK

1-ohm Stable Class D Circuitry to develop maximum power to drive your subwoofers

Low Current/High Efficiency Ultra low current draw produces less heat along with 85% efficiency for more power in a compact footprint

High / Low Level Inputs Compatible with OEM or aftermarket radios

Variable Electronic Low Pass Crossover to customize the bass to your vehicle

Variable Electronic Sub-Sonic Filter to cut the power robbing signals that cannot be reproduced or heard from your subwoofers

12dB Switchable Bass EQ adds 12dB of boost at 45Hz

Optional Remote Level Control use our PB-GAIN1 to adjust subwoofer output level

CLASS A/B FULL RANGE

2-ohm Stereo/4-ohm Mono Stable Circuitry maximizes the output power to your speakers

MOSFET Power Supply Class A/B Amplifier Technology

High/Low Level Inputs Speaker Level Inputs Allow you to add to Factory Radio

12dB Switchable Bass EQ adds 12dB of boost at 45Hz

High Pass/Low Pass Variable 12dB Electronic Crossover for versatility with any speaker system





POWERBASS SUBWOOFERS

POWERBASS SUBWOOFERS

Subwoofers add a very important part of feeling to our music, no matter what genera of music you listen to, that heart pounding, feel it in your chest bass. PowerBass subwoofers are engineered to outperform and are built with nothing but the highest quality parts right down to the glue that holds voice coil wire to the former for a truly invigorating bass experience.





UP TO
7000
WATTS

Custom tooled high roll 4-Layer foam surround

Non-Pressed Pulp Paper Cone

Sextuplet 10" progressive roll Conex spiders

Co-extruded dual tinsel wire system incorporating woven leads

Black 4" anodized ultra-long aluminum hi-temp former for extreme power handling

Dual 1 ohm CCAW (Copper Covered Aluminum Wire) flat wound voice coil

Dual nickel plated 5-way 4 gauge binding posts

Low carbon top and bottom plates yield symmetric magnetic field for increased operating efficiency

4-point precision motor alignment system

Quad 160 oz high density Barium Ferrite magnets (40 lbs of magnet)

Hyper extended one-piece vented back plate to maintain temperature stability and linear voice coil alignment

Heavy duty machine cut die-cast aluminum competition style basket with CAD located aerovents

XTREME 4XL Super Subwoofer



DESIGNED FOR
PORTED
ENCLOSURES
FOR MAXIMUM SPL OUTPUT

[15" Dual 1-ohm] 4XL-151D

3500 / 7000 watts

[15" Dual 2-ohm] 4XL-152D

3500 / 7000 watts





XTREME 3XL Subwoofers



DDC Non-Pressed Pulp Paper Cone

for Xtreme lower frequency extension and unrivaled bass output, this multi-layered cone ensure maximum power handling and deep pounding bass

Custom Cast Aluminum Basket provides the best woofer foundation available to handle the stress of high energy SPL

Dual 1-ohm or dual 2-ohm Voice Coils made with pure CCAW wire and looped through the spider

3.5" BASV Voice Coil Former

for optimal performance and power handling

High Roll Nitrile Butadiene Rubber (NBR) Surround allows maximum excursion while maintaining the precise centering of the voice coil resulting in higher undistorted output

Xtra Xtra Xtra Large Motor Structures high efficiency double stacked Y-35 strontium ferrite magnet are used to ensure optimum motor force

Spring Loaded Nickel Plated Input Terminals

to ensure maximum current transfer from your amplifier to your subwoofer

Billet Aluminum Trim Ring clamps surround to basket for increased durability

Optimally Designed for both Sealed and Ported Enclosures to ensure maximum power handling with the loudest output possible

| | |
|----------------------------|-------------------|
| [15" Dual 1-ohm] 3XL-1510D | 1500 / 3000 watts |
| [15" Dual 2-ohm] 3XL-1520D | 1500 / 3000 watts |
| [12" Dual 1-ohm] 3XL-1210D | 1000 / 2000 watts |
| [12" Dual 2-ohm] 3XL-1220D | 1000 / 2000 watts |



Power Ratings WATTS: RMS / PEAK

Peak Power is an instantaneous measurement that occurs sporadically during musical peaks. Full specifications can be found in the back of the catalog.



Woven Glass Fiber Cone With Pressed Kraft Paper Reinforcement

this custom composite cone was specifically designed to handle high power / high pressure environments in which a light weight yet extremely stiff cone is needed to reproduce tight, accurate bass response

Custom Cast Aluminum Basket

provides the best woofer foundation available to handle the stress of high energy SPL

Dual 4-ohm 2.5" Voice Coils

Provide optimal performance while lending themselves to multiple wiring configurations

BASV High Temperature Formers

SV Cooper voice coil winding in conjunction with an high temperature Bonder-360 adhesive is used to strengthen lamination on the Black Anodized Aluminum Former

Nitrile Butadiene Rubber (NBR) Surround allows maximum excursion while maintaining the precise centering of the voice coil resulting in higher undistorted output

Xtra Xtra Large Motor Structures

high efficiency Y-35 strontium ferrite magnet are used to ensure optimum motor force

Spring Loaded Nickel Plated Input Terminals

to ensure maximum current transfer from your amplifier to your subwoofer

Aluminum Trim Ring clamps surround to basket for increased durability

Optimally Designed for both small Sealed and Ported Enclosures to ensure maximum power handling with the loudest output possible in the smallest space possible

[12" Dual 4-ohm] 2XL-1240D
[10" Dual 4-ohm] 2XL-1040D

450 / 900 watts
400 / 800 watts

XTREME 2XL Shallow Mount Subwoofers



MULTI
ENCLOSURE
COMPATIBILITY

UP TO
900
WATTS



Proprietary 4-layer, Non-pressed Paper, DDC Finish Cone (Dynamic Damping Coating) for deeper, distortion free bass

Proprietary Composite Polycarbonate/Glass Fiber Basket turbine design provides a rigid and stable woofer platform

Dual and Single 4-ohm Voice Coils

made with high temperature cooper winding for optimum power handling

2" Vented BASV Voice Coil Formers

for optimal performance and power handling

High Roll Santoprene Surround

Increases cone area and maximizes excursion while providing exceptional linear stability

Xtra Large Motor Structures

for increased SPL and power handling

Spring Loaded Nickel Plated Input Terminals

ensure maximum current transfer from your amplifier to your subwoofer

Optimally Designed for Both Sealed or Ported

Enclosures for multiple installation applications

[12" Dual 4-ohm] XL-1240D
[12" Single 4-ohm] XL-1240
[10" Dual 4-ohm] XL-1040D
[10" Single 4-ohm] XL-1040
[8" Dual 4-ohm] XL-840D
[8" Single 4-ohm] XL-840

400 / 800 watts
400 / 800 watts
350 / 700 watts
350 / 700 watts
200 / 400 watts
200 / 400 watts

XTREME XL Subwoofers



MULTI
ENCLOSURE
COMPATIBILITY

UP TO
800
WATTS





XTREME XL Shallow Mount Subwoofers



OPTIMAL FOR
SEALED
ENCLOSURES



Single Piece Custom Injected Molded Cone

strong enough to withstand pounding bass in a small enclosure

Proprietary Composite Polycarbonate/Glass Fiber Basket turbine design provides a rigid and stable woofer platform

Dual and Single 4-ohm Voice Coils

made with high temperature copper winding for optimum power handling

2" High Temperature KSV Voice Coil Formers

for optimal performance and power handling

Santoprene Surround

allows for maximum excursion while providing exceptional linear stability

Xtra Large Motor Structures

for increased SPL and power handling

Spring Loaded Nickel Plated Input Terminals

to ensure maximum current transfer from your amplifier to your subwoofer

Optimally Designed for Small Sealed Enclosures for tight area, high SPL application

| | |
|-----------------------------|-----------------|
| [12" Dual 4-ohm] XL-1240TD | 400 / 800 watts |
| [12" Single 4-ohm] XL-1240T | 400 / 800 watts |
| [10" Dual 4-ohm] XL-1040TD | 350 / 700 watts |
| [10" Single 4-ohm] XL-1040T | 350 / 700 watts |



Autosound L Subwoofers



MULTI
ENCLOSURE
COMPATIBILITY



Injection Molded PP Cone lightweight, yet rigid with high damping qualities

Improved Dustcap reduces resonance and non-linear movement with cone

Large Roll, NBR Rubber Surrounds allows free movement of the cone which equals deep loud bass and high power handling

One Piece Backplate and Extended Pole Piece provides precise linear voice coil alignment while maximizing air flow from the vented pole piece

Large Motor Structures designed for a more linear movement and cooling efficiency

Dual 4-ohm Voice Coils made with pure PI wire looped through spider

2 and 2.5-inch BKS Voice Coil Formers

Black Kapton reduces heat and increases power handling

Chrome Push Terminals to guarantee optimal power transfer to your woofer from your amplifier

Non-resonant Basket acoustically dampened treated steel basket

Designed To Work Optimally In Sealed Or Ported Enclosures for multiple installation applications

| | |
|--------------------------|------------------|
| [15" Dual 4-ohm] L-1504D | 500 / 1000 watts |
| [12" Dual 4-ohm] L-1204D | 400 / 800 watts |
| [10" Dual 4-ohm] L-1004D | 350 / 700 watts |

Power Ratings WATTS: RMS / PEAK

Peak Power is an instantaneous measurement that occurs sporadically during musical peaks. Full specifications can be found in the back of the catalog.





Proprietary 4-layer, Non-pressed Paper, DDC Finish Cone Dynamic Damping Coating (DDC) for deeper, distortion free bass

Large Roll Santoprene Surround allows maximum excursion and precision bass reproduction

Improved Dustcap reduces resonance and non-linear movement with cone

Massive Motor Structure for high power handling and maximum output

Dual and Single 4-ohm Voice Coils made with pure PIW wire looped through the spider

2" and 2.5" Vented BASV Voice Coil Formers for optimal performance and power handling

Chrome Push Terminals to guarantee optimal power transfer to your woofer from your amplifier

Non-resonant Basket acoustically dampened treated steel basket

Optimally Designed for Both Sealed or Ported Enclosures for multiple installation applications

| | |
|---------------------------|-----------------|
| [15" Dual 4-ohm] M-1504D | 425 / 850 watts |
| [15" Single 4-ohm] M-1504 | 425 / 850 watts |
| [12" Dual 4-ohm] M-1204D | 350 / 700 watts |
| [12" Single 4-ohm] M-1204 | 350 / 700 watts |
| [10" Dual 4-ohm] M-1004D | 325 / 650 watts |
| [10" Single 4-ohm] M-1004 | 325 / 650 watts |

Autosound M Subwoofers



UP TO
850
WATTS



4-Layer Black Paper/Wool Cone provides for very natural smooth bass reproduction

Large Roll Foam Surrounds allow the free movement of the cone which equals loud bass

Oversized Motor Structure high intensity ferrite magnet for increased power handling

Dual and Single 4-ohm Voice Coils made with pure PIW wire looped through the spider

2" BASV Voice Coil Formers for optimum performance and cooling

Chrome Push Input Terminals to ensure the best current transfer from the amplifier to the woofer

Pole and Aero Vented Cooling cooler woofers mean better bass and power handling

Non-resonant Basket acoustically dampened treated steel basket

Designed For Both Small Sealed or Ported Enclosures which include most pre-fabricated boxes

| | |
|---------------------------|-----------------|
| [12" Dual 4-ohm] S-1204D | 300 / 600 watts |
| [12" Single 4-ohm] S-1204 | 300 / 600 watts |
| [10" Dual 4-ohm] S-1004D | 275 / 550 watts |
| [10" Single 4-ohm] S-1004 | 275 / 550 watts |
| [8" Dual 4-ohm] S-84D | 125 / 250 watts |
| [8" Single 4-ohm] S-84 | 125 / 250 watts |

Autosound S Subwoofers



UP TO
600
WATTS



UP TO
600
WATTS

Autosound S Thin Mount Subwoofers



OPTIMAL FOR
SEALED
ENCLOSURES



Thin Mount Woofer Design allows installation behind or under seats

Fiber Composite Turbine Basket adds structural integrity and reduces resonance

Single Piece Custom Injected Molded Cone strong enough to withstand pounding bass in a small enclosure

Large Roll Rubber Surround for optimum performance and durability

Oversized Motor Structure high intensity ferrite magnet for increased power handling

Dual And Single 4-ohm Voice Coils made with pure PIW wire looped through the spider

2" Vented KSV Voice Coil Former venting keeps the coil running cooler at high power

Chrome Push Terminals ensure the best current transfer from the amplifier to the woofer

Optimally Designed for Small Sealed Enclosures for tight area, high SPL application

[12" Dual 4-ohm] S-12TD
[12" Single 4-ohm] S-12T
[10" Dual 4-ohm] S-10TD
[10" Single 4-ohm] S-10T

300 / 600 watts
300 / 600 watts
275 / 550 watts
275 / 550 watts

UP TO
500
WATTS

Autosound PS Subwoofers



MULTI
ENCLOSURE
COMPATIBILITY



Proprietary 2-layer, Non-pressed Paper, DDC Finish Cone Dynamic Damping Coating (DDC) for deeper, distortion free bass

2" BASV Voice Coil Formers for optimum performance and cooling

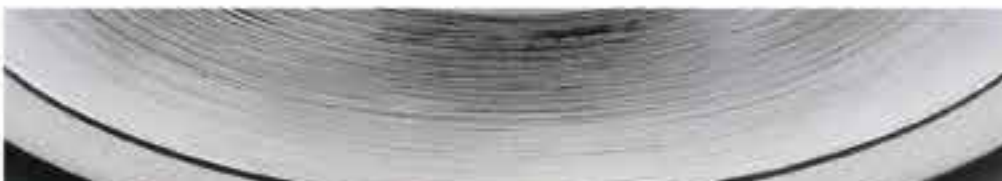
Non-resonant Basket
Acoustically dampened treated steel basket

Optimally Designed for Both Sealed or Ported Enclosures for multiple installation applications

[12" Single 4-ohm] PS-12
[10" Single 4-ohm] PS-10

250 / 500 watts
200 / 400 watts

Power Ratings WATTS: RMS / PEAK
Peak Power is an instantaneous measurement that occurs sporadically during musical peaks. Full specifications can be found in the back of the catalog.





POWERBASS POWER SPORTS & MARINE

POWERBASS POWERSPORTS & MARINE

The PowerBass Xtreme Powersports and Marine line are perfect for those that live life to the Xtreme. From the dunes to the trails, land, or sea PowerBass has the sound solution to fit your Xtreme lifestyle. Engineered to take the abuse of the elements all of the PowerBass Xtreme Powersports and Marine products are water resistant, and built to withstand vibration and xtreme weather conditions to keep the sound rocking in your UTV, ATV, Boat, Jeep or RV season after season!



The XL series was developed for the growing Power Sports market including UTV and Marine applications—where electronics must withstand harsh environments. The circuit boards have been conformally coated with a layer of transparent material that protects the parts against moisture, dust and temperature extremes.

These ultra small weather resistant amplifiers are ideal for all types of outdoor audio applications such as motorcycles, golf carts and off road vehicles. But the small size also makes these amps a great choice anywhere space is a premium.

Utilizing the latest Class D circuit design these amplifiers may be small on size but they are big on power and have a much lower current draw compared to other amplifiers with similar power output. The wrap around aluminum heatsink keeps everything running cool.

The six models include a two channel, a four channel, a three and five channel along with two mono amplifiers that are bass specific.

Extremely versatile, each model gives you a choice of either low level RCA / high level in speaker output or 3.5mm (1.8") mini-pug Aux Input. The Aux Input allows for easy connection of portable devices such as an iPod, MP3 player or smartphone to become your source unit.

The XL-5675M, XL-3515M, XL-2205M, XL-605DM and the XL-355DM includes a wire Remote Level Controller.

XTREME Power Sports Amplifiers



Wrap Around Aluminum Heatsink
provides maximum heat management

Side Panel Aux Input (3.5mm)
allows you to use a portable device as a source unit

Conformal Coated PC Board
Weather resistant against dust and moisture

Low Power Draw
draws less current compared to amps with similar power output

Latest IR Class Technology
High efficiency delivers Big Power in a Small Chassis

High / Low Level Input Compatible with OEM or aftermarket radios

Class D Monoblock
[1CH] XL-605DM
[1CH] XL-355DM

Max Power*
1200 watts
700 watts

Class D Full Range
[5CH] XL-5675M
[4CH] XL-4165M
[3CH] XL-3515M
[2CH] XL-2205M

1980 watts
1280 watts
1340 watts
800 watts



UV Stable Injection Molded Plastic Pod
Molded from marine grade polymer materials houses the speaker and protects it from the effects of the outdoor environment while providing great looks

Black Chrome Plated Die-Cast Swivel Clamp System
Solid marine grade Zinc Alloy provides strength and corrosion resistance; accepts bar sizes of 1.5", 1.75" and 2.0" diameter

Polypropylene Injected Cone
Chosen for its strong yet lightweight body this waterproof woofer cone has UV inhibitors to minimize cracking and fading

Grill Mounted 25mm SD Mylar Tweeter Design
Allows for stronger output in both midrange and upper frequency extension

Safety Cable A braided wire cable provides an extra level of security for the Pod when looped and fastened around the tower bar

XTREME Power Sports Short Range Speaker Pod



[8"] XL-POD8SR
[6.5"] XL-POD65SR
[5.25"] XL-POD5SR

100 / 200 watts
60 / 120 watts
50 / 100 watts



XTREME Power Sports Coaxials



Designed to Withstand the Elements

Poly cone, rubber surround, gold terminals and aluminum grills are just a few of the upgrades added

Protected Voice Coil Gasket

Our rubber trampoline gasket seals the tweeter pole piece and protects the voice coil

25mm Mylar Dome Tweeter with diffuser for loud clean highs

Polypropylene Cone Material is waterproof and is unaffected by moisture

Black Powder Coated Steel Basket provides a protective skin over the basket

Stainless Steel Mounting Hardware resists rust and corrosion

Includes Both White and Black Aluminum Mesh Grills gives you a choice of color matching while protecting the speaker



| | |
|-----------------|-----------------|
| [8"] XL-82SS | 125 / 250 watts |
| [6x9"] XL-692SS | 80 / 160 watts |
| [6.5"] XL-62SS | 60 / 120 watts |
| [5.25"] XL-52SS | 50 / 100 watts |
| [4.5"] XL-42SS | 40 / 80 watts |



XTREME Power Sports Soundbar

Enjoying the trails or hitting the dunes just got a lot better with the PowerBass XL-800, XL-1000 and the all new XL-1200 sound bars. Bringing first class audio to your off-road vehicle that is loud and clear even in the most extreme conditions. Perfect fit and easy install make enjoying your favorite tunes a breeze!

XL-800



Full Range Marine Grade Poly Cone Speakers

Set up in a sound array for high volume output

1.25" x2 SD Mylar Tweeters

Gives the sizzle that enhances the high end of music

Heavy Duty Extruded Aluminum Water Tight Housing

For added heatsink cooling and a tight sealed environment for the drivers

Bluetooth and Wired Inputs

Let's you select the way you want to deliver the music

2 Volt Line Output

To add a subwoofer or another soundbar

Auto Turn Off Circuit

No hassle music when you need it and no dead batteries

Universal Mounting L Brackets

Gives you the options of how and where you want to mount it

Optional Universal Roll Bar Clamps (Shown Below)

Gives you additional mounting options (Sold Separately)

Optional Wired Remote (Shown Below)

Sold Separately



XL-1200 (Shown with grill cover off)



XL-SBCON



XL-SBCLAMP

| | |
|--|------------------|
| [3.5" Woofers x 6 + 3" Full Range x 2] XL-1200 | 500 / 1000 watts |
| [3" Full Range x 8] XL-1000 | 400 / 800 watts |
| [3" Full Range x 6] XL-800 | 300 / 600 watts |

**Marine Grade Woofer with Injection Molded
UV-Treated White Polypropylene Cone**

Polyurethane Rubber Woofer Surround

Insulated Tinsel Leads

Marine Grade Spider

UV Treated White Poly Carbonate Basket

Nickel Plated Cooper Push Terminals

White Powder Coated Aluminum Grill Included

XTREME Marine Free Air Subwoofer



**[12"] XL-124MF
[10"] XL-104MF**

**250 / 500 watts
200 / 400 watts**



Chrome Plated Die-Cast Swivel Clamp System
Solid marine grade Zinc Alloy provides strength and corrosion resistance; accepts bar sizes from 1.5" to 3.0" diameter

Polypropylene Injected Cone
Chosen for its strong yet lightweight body this waterproof woofer cone has UV inhibitors to minimize cracking and fading

TPU Surround A synthetic material known for its toughness and flexibility while rejecting water, sun and salt

Compression Horn Tweeter A special horn tweeter was chosen to project loud, crisp and clean highs that can be heard well beyond the boat

RGB Illumination
Select different lighting effects, colors and brightness all from the RF remote controller

UV Stable Injection Molded Poly-Plastic Pod
Molded from marine grade polymer materials houses the speaker and protects it from the effects of the outdoor environment while providing great looks

Safety Cable A braided wire cable provides an extra level of security for the Pod when looped and fastened around the tower bar

XTREME Marine Wakeboard Speaker Pod



**[10"] XL-POD10LR
[8"] XL-POD8LR
[6.5"] XL-POD6LR**

**150 / 300 watts
120 / 250 watts
75 / 150 watts**





XTREME Marine Coaxials



Marine Grade Speakers with Injection Molded
UV-Treated White Polypropylene Cones

UV-Resistant Hi-Impact Integrated White Grills

White Polyamide Speaker Baskets

Polyurethane Rubber Woofer Surrounds

Grill Mounted 25mm Titanium Dome Tweeters

RGB Illumination With Selectable Lighting Effects

Gold Plated Input Terminals

Moisture Protective Sealed Magnet Covers

Stainless Steel Mounting Hardware

Insulated Tinsel Leads

[8"] XL-82M
[6x9"] XL-69M
[6.5"] XL-62M

125 / 250 watts
120 / 240 watts
80 / 160 watts



RGB Illumination With Selectable Lighting Effects

PowerBass XL Marine Series Coaxials and Long Range Pods come equipped with user selectable RGB Lighting and can be linked to each other for single remote control of all RGB lighting. Select up to 20 different colors and over 15 different lighting modes all with your RF Remote included.



POWERBASS SPEAKERS

POWERBASS
SPEAKERS

PowerBass Custom fit S and L series speakers provide a very efficient replacement speaker for factory powered systems, while the 2XL and 3XL speakers provide a wide frequency range and extended power handling to really get the music flowing. From OEM replacement speakers to the most advanced speaker systems, PowerBass speakers deliver crisp clear highs, sharp vocals and optimized lows to satisfy even the most particular listener.







1" Emperors Silk Dome Tweeter*
with acoustically transparent mesh screen for improved highs

Twill Woven S-2 Fiberglass Cone
sealed with a gel coating to reduce resonance

Progressive Dual Roll Rubber Surround
for controlled linear cone excursion for deep, powerful bass

High Voltage Crossover Capacitor
Hidden 200V Capacitor for Increased Power Handling

XTREME 3XL Coaxials



[6x9"] 3XL-693
[6.5"] 3XL-653

130 / 260 watts
90 / 180 watts

1" Emperors Silk Dome Tweeter*
With acoustically transparent mesh screen for improved highs
(*3/4-inch dome on 2XL-403 and 2XL-463)

Non-Woven Wool Paper Cone Optimal ratio of paper and
wool for better bass response

Butyl Rubber Surround provides years of accuracy and
quality sound

Heavy Motor Structure with protective boot for increased
power handling

3-ohm System Impedance for more efficient use of amplifier
power

Non-resonant Basket Acoustically dampened treated steel
basket

PBX Custom Mesh Grill insures your speaker looks and
sounds its best

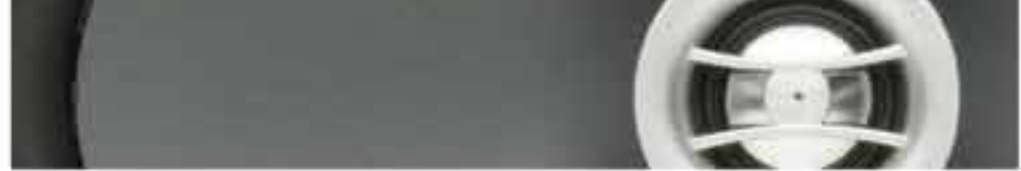
XTREME 2XL Coaxials



[6x9"] 2XL-693
[6x8"] 2XL-683
[6.75"] 2XL-673
[6.5"] 2XL-653
[6.5" thin] 2XL-653T
[5.25"] 2XL-523
[4x6"] 2XL-463
[4"] 2XL-403

100 / 200 watts
75 / 150 watts
75 / 150 watts
75 / 150 watts
60 / 120 watts
60 / 120 watts
50 / 100 watts
50 / 100 watts





Autosound L Coaxials



Advanced Injection Cone

Injection molded PP cone with carbon fiber for improved bass

Aluminum Dome 3/4" Tweeter

Delivers sharp crisp treble reproduction (L2-693 uses PEI tweeter and mid)

Butyl Rubber Surround provides linear cone movement that gives accurate sound replication

2-Ohm System Impedance compatible with most premium factory systems

Non-resonant Basket

Acoustically dampened treated steel basket

Wave Guide Tweeter Lens Specially engineered to provide smooth and uniform response

| | |
|---------------------|-----------------|
| [6x9"] L2-693 | 100 / 300 watts |
| [6x9" thin] L2-692T | 60 / 180 watts |
| [6x8"] L2-682* | 70 / 210 watts |
| [7" Mid] L2-700* | 90 / 270 watts |
| [6.75"] L2-675* | 60 / 180 watts |
| [6.5"] L2-652 | 60 / 180 watts |
| [5.25"] L2-522 | 50 / 150 watts |
| [4x6"] L2-462* | 40 / 120 watts |

*Grills not included

Autosound S Coaxials



Pure Silk Dome 3/4" Tweeter and Neodymium Magnet

delivers smooth and accurate treble reproduction (S-3502 and S-4602 use a PEI tweeter, S-6903 uses PEI tweeter and mid; S-275CF is dual cone)

2-layer Paper, DDC Cone (Dynamic Damping Coating)

reduces distortion while adding UV protection

Double Pressed, UV Treated Foam Surround

provides accurate and distortion free audio replication

OEM Drop in Replacement Design makes it easy to replace factory speakers without any modifications including hard to find sizes like 6x8" & 4x10" (grills may not be necessary)

EFF Motor Structures (Efficient Flux Field) will ensure louder sound reproduction with lower power input

Non-resonant Basket

Acoustically dampened treated steel basket

Proprietary SEL Tweeter Ring (Sound Expander Lens) to focus the high frequencies where you need them the most

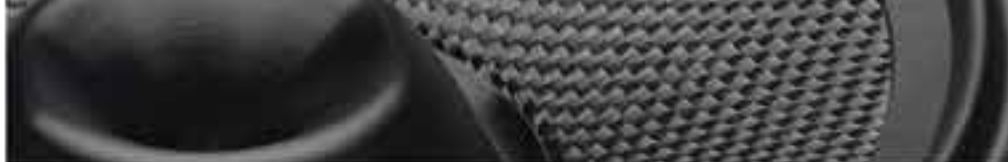
| | |
|---------------------|----------------|
| [6x9"] S-6903 | 70 / 210 watts |
| [6x9" thin] S-6902T | 50 / 150 watts |
| [6x8"] S-6802* | 60 / 180 watts |
| [4x10"] S-4102* | 50 / 150 watts |
| [6.75"] S-6752* | 50 / 150 watts |
| [6.5"] S-6502 | 50 / 150 watts |
| [6.5" thin] S-650T | 45 / 135 watts |
| [5.25"] S-5202 | 40 / 120 watts |
| [4x6"] S-4602* | 35 / 105 watts |
| [4"] S-4002 | 35 / 105 watts |
| [3.5"] S-3502* | 30 / 90 watts |
| [2.75"] S-275CF* | 30 / 60 watts |

*Grills not included

Power Ratings WATTS: RMS / PEAK

Peak Power is an instantaneous measurement that occurs sporadically during musical peaks. Full specifications can be found in the back of the catalog.





1" Emperors Silk Dome Tweeter*

with acoustically transparent mesh screen for improved highs

Twill Woven S-2 Fiberglass Cone

sealed with a gel coating to reduce resonance

Progressive Dual Roll Rubber Surround

for controlled linear cone excursion for deep, powerful bass

DPI (Dynamic Phase Imaging) Plug

Provides smoother dispersion of mid range frequencies

Computer Optimized Crossover Network

12dB Network with on board +3 or -3dB attenuation

XTREME 3XL Component System



[6.5" Set] 3XL-63C

90/ 180 watts

Pivoting 1" Silk Dome Tweeter with mounting kit delivers smooth and accurate treble reproduction that allows you to focus the sound where it is needed most

50/50 Wool Blend Cone delivers the smoothest, most natural sound reproduction available

Rigid Tooled Basket with Stainless Steel Finish for a stable, high performance speaker foundation

3-Ohm System Impedance for more efficient use of amplifier power that gives you cleaner and louder audio replication

Butyl Rubber Surround provides linear cone movement that gives accurate sound replication

Heavy Motor Structure with protective boot for increased power handling

Computer Aided External 12dB 2-way Bi-Ampable Crossover Network allows you to choose between conventional or bi-amp wiring configuration

PBX Custom Grill insures you speaker is protected and looks it's best

XTREME 2XL 3-way Component System



2XL Softdome Mid (2XL-3M)
also available separately



[6.5" set] 2XL-60.3C

120 / 240 watts

[3"] 2XL-3M

40 / 80 watts





XTREME 2XL Component System



Pivot Point 1" Silk Dome Tweeter with mounting kit delivers smooth and accurate treble reproduction that allows you to focus the sound where it is needed most

Convertible Tweeter Assembly removable phase plug for co-axial or component style mounting

Non-woven Wool Paper Cone Optimal ratio of paper and wool for better bass response

Non-resonant Basket
Acoustically dampened treated steel basket

3-Ohm System Impedance for more efficient use of amplifier power that gives you cleaner and louder audio replication

Butyl Rubber Surround provides linear cone movement that gives accurate sound replication

Heavy Motor Structure with protective boot for increased power handling

Computer Aided External 12dB 2-way Crossover Network for smooth transitions between the woofer and tweeter

PBX Custom Mesh Grill insures you speaker is protected and looks it's best

[6.5" set] 2XL-63C

90 / 180 watts

Autosound L Component System



Advanced Injection Cone
Injection molded PP cone with carbon fiber for improved bass

Aluminum Dome 1" Tweeter for sharp, crisp treble reproduction

Butyl Rubber Surround for years of accuracy and quality sound

2-ohm Midrange/3-ohm Tweeter for more efficient use of amplifier power

Flush/Surface/Angle Mounts provides pinpoint imaging and installation versatility

Non-resonant Basket
Acoustically "dead" treated steel basket

Deluxe External 12dB 2-way Crossover Network for smooth transitions between the woofer and tweeter

[6.5" set] L2-6C

75 / 225 watts

Power Ratings WATTS: RMS / PEAK
Peak Power is an instantaneous measurement that occurs sporadically during musical peaks. Full specifications can be found in the back of the catalog.





Pure Silk Dome 1" Tweeter for accurate and smooth high frequency sound reproduction

Black 2-layer Paper, DDC Cone Dynamic Damping Coating (DDC) for deeper, distortion free bass

Double Pressed Treated Foam Surround
UV protected for long life

Shallow Mounting Depth fits almost any vehicle

EFF Motor Structures (Efficient Flux Field)
will ensure louder sound reproduction with lower power input

Non-resonant Basket
Acoustically dampened treated steel basket

Computer Aided External 12dB 2-way
Crossover Network for smooth transitions between the woofer and tweeter

Autosound S Components



[6.5" set] S-60C
[5.25" set] S-50C

70 / 210 watts
50 / 150 watts

Pivoting Tweeters With Composite Surround
for outstanding imaging and high frequency reproduction

Compact Computer Optimized Acoustic Crossover Network 12dB/octave inline crossover

Flush, Angle And Surface Mount Kit
provides custom pinpoint imaging and installation versatility

XTREME 3XL-series 1.25" Pure Silk Dome Tweeter



[1.25"] 3XL-2S

60 / 120 watts

Pivoting Tweeters With Composite Surround
for outstanding imaging and high frequency reproduction

Compact Computer Optimized Acoustic Crossover Network 12dB/octave inline crossover

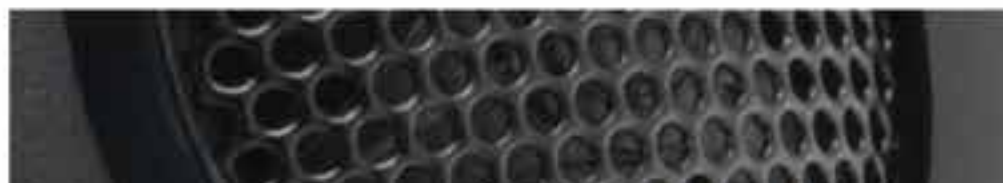
Flush, Angle And Surface Mount Kit
provides custom pinpoint imaging and installation versatility

XTREME 2XL-series 1" Titanium Tweeter



[1.0"] 2XL-1T

50 / 100 watts





Autosound L-series 1" Aluminum Tweeter



Aluminum Dome for sharp wide spectrum treble reproduction

In-line 12 dB Acoustic Crossover for accurate frequency response and outstanding reproduction.

Flush/Angle/Surface Mounts provide pinpoint imaging and installation versatility

Ferrofluid® Cooling for higher power handling

Neodymium Magnet provide small powerful motors for these tweeters to reproduce high output and accurate sound reproduction

[1.0"] L-1A

50 / 100 watts

Autosound S-series 1" Pure Silk Dome Tweeter



Silk Dome for smooth sound without listener fatigue

In-line 12 dB Acoustic Crossover for accurate frequency response and outstanding reproduction

Flush/Angle/Surface Mounts provide pinpoint imaging and installation versatility

Ferrofluid® Cooling for higher power handling

Neodymium Magnet provides small powerful motors for these tweeters to reproduce high output and accurate sound reproduction

[1.0"] S-1S

50 / 100 watts

Autosound 1" Zirconium Tweeter



Low Distortion, Light Weight & Highly Reliable

The integral phase plug and ceramic Element provide high power handling without the need of a crossover.

Surface Mount provides simple installation.

[1.0"] S-1ZT

50 / 100 watts

Power Ratings WATTS: RMS / PEAK

Peak Power is an instantaneous measurement that occurs sporadically during musical peaks. Full specifications can be found in the back of the catalog.



XTREME XPRO CX Professional Drivers



Over Built Pro Audio Design
Y-35 Grade Magnet with vented pole piece

Triple Roll Cloth Surround
for precise linear controlled excursion

Large Heat Dissipating Voice Coil
up to 2" BASV Former

Chrome Push Input Terminal
accepts up to 8-ga speaker wire for
maximum current transfer

**Die-cast Aluminum Basket and Protective
Grills Included**

Sold individually



[8"] XPRO-8CX 225 / 450 watts
[6.5"] XPRO-65CX 150 / 300 watts

XTREME XPRO Professional Drivers



Over Built Pro Audio Design
Y-35 Grade Magnet with vented pole piece

Double Roll Textile Surround
for precise linear controlled excursion

Large Heat Dissipating Voice Coil
up to 2" BASV Former

Chrome Push Input Terminal
accepts up to 8-ga speaker wire for
maximum current transfer

Stamped Steel Grill Available
(Sold Separately)

Sold individually



[8"] XPRO-8 200 / 400 watts
[6.5"] XPRO-65 125 / 250 watts

XTREME XPRO Professional Horn Tweeter



Die Cast Aluminum Horn
Precision Tapered Aluminum Integral Phase Plug
1.75" KSV Voice Coil
Double Stack Magnet - 25 oz

Sold individually



[4"] XPRO-4H 150 / 300 watts



XTREME 4XL Mid Range Driver

Acoustic Phase Plug

extends high frequency response while reducing cancellation

Accordion Surround

cloth edge surround minimizes distortion

Chrome Push Input Terminals

accept up to 10-ga speaker wire for maximum current transfer

1.5" KSV Voice Coil

single 4-ohm VC designed to work with mobile amplifiers

Stamped Steel Grill Available Separately

Sold individually

[8"] 4XL-80T
[6.5"] 4XL-65T

150 / 300 watts
100 / 200 watts

XTREME 4XL Shallow Mid Range Component

Treated Paper Cone with Multi-Roll Accordion Surround
provides smooth natural sounding midrange output

Acoustic Phase Plug

extends high frequency response while reducing cancellation

2" Shallow Mount Compression Horn Tweeters

designed for wide dispersion ultra-high frequency response

Computed Aided External 12dB Crossover
allows for smooth transition between the midrange and tweeter

Protective Steel Grills Included

[6.5"] 4XL-65C

100 / 200 watts



XTREME 4XL 2" Compression Horn Tweeter

Compression Horn Tweeter provides outstanding imaging and smooth high frequency reproduction.

Bullet Design Phase Plug

designed for wide dispersion ultra-high frequency response

8 oz Ferrite Magnet
103 dB 1W/1M
6dB Crossover Included

Sold individually

[2"] 4XL-2H

100 / 200 watts



Autosound 3" Cast Aluminum Horn Tweeter

Compression Horn Tweeter provides outstanding imaging and smooth high frequency reproduction.

Bullet Design with Diamond Cut Accents
for precise frequency separation

18 oz Ferrite Magnet
105 dB 1W/1M
6dB Crossover Included

Sold individually

[3"] L-3H

100 / 200 watts







POWERBASS TOYOTA OEM

POWERBASS TOYOTA

Making any factory sound system sound fantastic is simple with the new PowerBass OEM Direct Fit Speakers for most Lexus, Scion, and Toyota cars, trucks, and SUVs'. The

PowerBass OEM Direct Fit Speakers are available in co-axial and component configuration delivering the music experience you have always wanted from your factory sound system with no wires to cut or holes to drill.



Making any stock factory sound system sound fantastic is simple with our OEM drop in replacement speakers for most Lexus, Scion, and Toyota cars, trucks, and SUVs'. PowerBass OEM Speakers are available in two different styles. The coaxials feature an Injection molded PP cone with a 1" silk dome tweeter, while the component system features an Injection molded woofer cone with a separate 1" inverted titanium dome tweeter to deliver the music experience you have always wanted from your factory sound system.

Injection PP Cone

Nylon OEM Speaker Basket

1" Silk Dome Tweeter

20 oz. Magnet

Lexus CT
Lexus GX
Lexus LS
Lexus RX
Toyota 4Runner
Toyota Avalon
Toyota Camry
Toyota FJ Cruiser
Toyota Highlander
Toyota Land Cruiser
Toyota Prius
Toyota Sequoia
Toyota Solara
Toyota Tacoma
Toyota Tundra
Toyota Venza

6x9" Coaxial OEM Toyota Replacement Speaker



[6x9"] OE692-TY 80 / 160 watts

Injection PP Cone

Nylon OEM Speaker Basket

1" Silk Dome Tweeter

20 oz. Magnet

Lexus CT
Lexus ES
Lexus GS
Lexus GX
Lexus IS
Lexus IS
Lexus RX
Pontiac Vibe
Scion TC
Scion XA
Scion XB
Scion XD
Toyota 4Runner
Toyota Avalon
Toyota Celica
Toyota Corolla
Toyota Echo
Toyota Highlander
Toyota Matrix
Toyota Prius
Toyota RAV4
Toyota Sequoia
Toyota Sienna
Toyota Solara
Toyota Tacoma
Toyota Tundra
Toyota Tundra
Toyota Venza
Toyota Yaris

6.5" Coaxial OEM Toyota Replacement Speaker



[6.5"] OE652-TY 60 / 120 watts



6x9" Component OEM Toyota Replacement Speaker



Injection PP Cone

Nylon OEM Speaker Basket

1" Inverted Titanium Dome Tweeter

20 oz. Magnet

Lexus CT
Lexus GX
Lexus LS
Lexus RX
Toyota 4Runner
Toyota Avalon
Toyota Camry
Toyota FJ Cruiser
Toyota Highlander
Toyota Land Cruiser
Toyota Prius
Toyota Sequoia
Toyota Solara
Toyota Tacoma
Toyota Tundra
Toyota Venza

[6x9"] OE692-TY 80 / 160 watts

6.5" Component OEM Toyota Replacement Speaker



Injection PP Cone

Nylon OEM Speaker Basket

1" Inverted Titanium Dome Tweeter

10 oz. Magnet

Lexus CT
Lexus ES
Lexus GS
Lexus GX
Lexus IS
Lexus IS
Lexus RX
Pontiac Vibe
Scion TC
Scion XA
Scion XB
Scion XD
Toyota 4Runner
Toyota Avalon
Toyota Celica
Toyota Corolla
Toyota Echo
Toyota Highlander
Toyota Matrix
Toyota Prius
Toyota RAV4
Toyota Sequoia
Toyota Sienna
Toyota Solara
Toyota Tacoma
Toyota Tundra
Toyota Venza
Toyota Yaris

[6.5"] OE65C-TY 60 / 120 watts

Power Ratings WATTS: RMS / PEAK

Peak Power is an instantaneous measurement that occurs sporadically during musical peaks. Full specifications can be found in the back of the catalog.



XTREME 8" Loaded Thin Enclosure



Small Enough to Fit Under or Behind Most Seats our XL-804 woofer in a great looking loaded enclosure belts out bass you can feel

Computer Optimized Design compact slot port enclosure of high quality MDF is rectangular shaped and covered in black aviation grade vinyl

[Single 8"] XL-WB8
200 / 400 watts

height: 11.25"
width: 19.25"
depth: 5.5"

Heavy-duty Box Design

Enclosures are constructed from non-resonant 5/8" panels

Stylish Two-tone Vinyl

RFG aviation grade vinyl for high wear resistance

Computer Optimized Acoustic Chamber

Perfectly tuned for the automotive environment

Single 4-ohm Color Coded Input

All models feature a single 4-ohm two wire input to simplify wiring

Autosound Dual Loaded Subwoofer Enclosures



[Dual 12"] PS-WB122
550 / 1100 watts

height: 13.5"
width: 34"
top depth: 12.25"
bottom depth: 14.4"

[Dual 10"] PS-WB102
500 / 1000 watts

height: 12.25"
width: 32"
top depth: 11.4"
bottom depth: 13.75"



Heavy-duty Box Design

Enclosures are constructed from non-resonant 5/8" panels

Stylish Two-tone Vinyl

RFG aviation grade vinyl for high wear resistance

Computer Optimized Acoustic Chamber

Perfectly tuned for the automotive environment

Single 4-ohm Color Coded Input

All models feature a single 4-ohm two wire input to sim

Autosound Single Loaded Subwoofer Enclosures



[Single 12"] PS-WB121
275 / 550 watts

height: 13.5"
width: 18.75"
top depth: 12.25"
bottom depth: 14.4"

[Single 10"] PS-WB101
250 / 500 watts

height: 12.25"
width: 17"
top depth: 11.4"
bottom depth: 13.75"





Autosound Amplified Subwoofer Enclosures



Efficient Poly Cone Woofer Application specific woofer with NBR rubber surround

Built-in Class A/B Amplifier High Powered MOSFET Amplifier

Stylish Two-tone Vinyl RFG aviation grade vinyl for high wear resistance

Computer Optimized Acoustic Chamber Perfectly tuned for the automotive environment

12dB Bass EQ Circuitry Variable BASS EQ @45Hz for precise bass tuning

High / Low Input Compatible with OEM or aftermarket radios

Variable Remote Level Control (Included)

[Single 12"] PS-AWB121
200 / 400 watts

height: 13.5"
width: 18.75"
top depth: 12.25"
bottom depth: 14.4"

[Single 10"] PS-AWB101
175 / 350 watts

height: 12.25"
width: 17"
top depth: 11.4"
bottom depth: 13.75"



Autosound Downfiring 10" Subwoofer Enclosure

Air Suspension Enclosure

The most efficient method of producing the most output with the least amount of amplifier power

Heavy-duty Box Design

Enclosures are constructed from non-resonant 5/8" panels

Computer Optimized Acoustic Chamber

Perfectly tuned for the automotive environment

Single 4-ohm Color Coded Input

All models feature a single 4-ohm two wire input to simplify wiring

PS-DF110T
275 / 550 watts

height: 21.4"
width: 17.76"
top depth: 5.63"
bottom depth: 5.63"



Autosound Amplified Downfiring 10" Sub Enclosure

Air Suspension Enclosure

The most efficient method of producing the most output with the least amount of airspace

Heavy-duty Box Design

Enclosures are constructed from non-resonant 5/8" panels

Computer Optimized Acoustic Chamber

Perfectly tuned for the automotive environment

175 watts RMS Mono Amplifier (300 Watts Peak Music Power)

Auto Remote Turn-On Circuit (High Level Input Mode)

Variable Remote Level Control Included

PS-ADF110T
175 / 350 watts

height: 21.4"
width: 17.76"
top depth: 5.63"
bottom depth: 5.63"





Heavy-duty Box Design

Enclosures are constructed from non-resonant 5/8" panels

Stylish Two-tone Vinyl

RFG aviation grade vinyl for high wear resistance

Computer Optimized Acoustic Chamber

Perfectly tuned for the automotive environment

Single 4-ohm Color Coded Input

All models feature a single 4-ohm two wire input to simplify wiring

Variable Remote Level Control (Included)



[Single 12" Thin] PS-AWB121T

200 / 400 watts

height: 14"
width: 30.3"
top depth: 3.75"
bottom depth: 5.7"

[Single 10" Thin] PS-AWB101T

175 / 350 watts

height: 13"
width: 21.5"
top depth: 3.75"
bottom depth: 7"



Autosound Amplified Thin Loaded Enclosures



Heavy-duty Box Design

Enclosures are constructed from non-resonant 5/8" panels

Stylish Two-tone Vinyl

RFG aviation grade vinyl for high wear resistance

Computer Optimized Acoustic Chamber

Perfectly tuned for the automotive environment

Single 4-ohm Color Coded Input

All models feature a single 4-ohm two wire input to sim

Autosound Thin Loaded Enclosures



[Single 12" Thin] PS-WB121T

300 / 600 watts

height: 14"
width: 30.3"
top depth: 3.75"
bottom depth: 5.7"

[Single 10" Thin] PS-WB101T

275 / 550 watts

height: 13"
width: 21.5"
top depth: 3.75"
bottom depth: 7"





Autosound 8" Loaded Aluminum Enclosure



- Aluminum Enclosure with Lighted Badge
- Auto Remote Turn-On Circuit (High Level Input Mode)
- 8-inch Polypropylene Subwoofer
- High / Low Input Compatible
- Variable Remote Level Control (Included)



| | | |
|------------------------|---------------|--------------|
| STA-8 | height: | 2.75" |
| 150 / 300 watts | width: | 9.75" |
| | depth/length: | 13.5" |

Autosound Amplified 8" Subwoofer Enclosure



- Black Carpeted Enclosure with Embroidered Logo
- CAD (Computer Aided Design) for maximum output in small spaces
- 8-inch Polypropylene Woofer with 40 oz ferrite magnet and pole venting
- 150 watts RMS Mono Amplifier (300 watts Peak Music Power) featuring variable Gain, Low Pass and Bass EQ
- High / Low Input Compatible with OEM or aftermarket radios
- Variable Remote Level Control (Included)



| | | |
|--------------------------|---------------|--------------|
| [Single 8"] BTA-8 | height: | 10" |
| 150 / 300 watts | width: | 10" |
| | depth: | 14.5" |
| | bottom depth: | 21.5" |



XTREME 9 Band Premium Equalizer / Pre-amp

Mosfet PWM Power Supply
Frequency Response: 20HZ-40KHz
Variable Subwoofer Frequency Roll-off 30Hz-120Hz
Front Panel Source Selector
Independent Subwoofer Volume Control
Front and Rear Output Fader
2 Low Level RCA Inputs: Rear Aux and Rear CD
3 Low Level RCA Outputs: Sub, Front and Rear
Centers 50Hz, 120Hz, 250Hz, 500Hz, 1KHz, 2KHz, 4KHz, 8KHz, 16KHz
10Vrms Output

[9 Band] XEQ-9X0



Autosound 4 Band Equalizer / Pre-amp

Bi-Polar Power Supply
Switchable main/aux input
Front/Rear/Sub Output
Master Volume Control
Selectable 120/80Hz Subwoofer Crossover
Subwoofer Volume Control
Fader Control
Front Panel AUX 3.5mm input (MP3 ready)
10Vrms Output

[4 Band] AEQ-4XOA



XTREME 4 Band, 3 Zone 1/2 DIN Marine / PowerSports Equalizer

4 Band Dual Zone Equalization; Bass, Mid-Bass, Mid and High
Main Volume Control with 3 Independent Zone Output Controls
Front Panel Source Selector; Main, Aux and Bluetooth
Front Panel Tri-Illumination Selector
Front Panel Track Selector
6Vrms Output
USB Charging Port
Marine Grade Conformal Coated PCB



[4 Band] XEQ-4BT

XTREME Universal Bluetooth Receiver with Volume Control

Universal Bluetooth Receiver with Volume Control
Mounting: Under Dash or Flush Mount
Connections: 12V Power, Ground and Remote Out Outputs: RCA
Compatible with Android, iPhone and most other Bluetooth enabled devices
2Vrms Output
Range: 30 Feet
Adjustments: Power, Track up/down, Volume up/down and Pause
USB Charging Feature DC 5 Volts, 1Amp



[Bluetooth] XL-50BT

Autosound 4-CH Line Output Converter



- 2CH/4CH Selector Switch
- Front/Rear High Level Inputs
- Front/Rear Variable Gain
- LED Clipping Indicator
- Front/Rear RCA Low Level Output
- Includes Remote Level Controller (Rear)
- 13Vrms Output
- Auto Turn-On Circuitry

[4CH/2CH] ALC-4

Autosound 2-CH Line Output Converter / Line Driver



- 2-channel LOC
- Selectable High/Low Input
- Variable Gain
- LED Clipping Indicator
- RCA Low Level Output
- 13Vrms Output
- Auto Turn-On Circuitry

[2CH] ALC-2

Autosound 100 Amp AC to DC Power Supply



- 100 Amp AC to DC Regulated Power Supply
- Up to 100 Amps Output Current
- Up to 400 Amps Output Current; linking 4 units
- 120V Input Voltage (220V Input Voltage on APS-100X)
- Built-in Quad Cooling Fans
- LCD Voltage Meter Included
- Intelligent 3-Way Protection Circuit

[120V] APS-100
[220V] APS-100X

XTREME 4 / 8 AWG Premium Amplifier Wiring Kits

Complete Premium Amp Kit With Ultraflex OFC (Oxygen Free Copper) for Power & Ground

- 17' Triple Shield Braided RCA Cable
- 17' Orange-flex Power Wire
- 7' Black-flex Ground
- 17' Premium Speaker Wire
- Mini ANL Fuse Holder
- 6' Black Split Loom Tubing
- Gold Terminal Connectors



[4AWG] XWK-40
[8AWG] XWK-80

Autosound Amplifier Wiring Kits

4-Gauge or 8-Gauge Complete Amp Kit With 50/50 Mix Of CCA & Copper for Power & Ground

- 17' Dual Shield Twisted Pair RCA Cable
- 17' Blue Power Wire
- 7' Black Ground Wire
- 20' Deluxe Speaker Wire
- AGU Fuse Holder
- 6' Split Loom Tubing
- Gold Terminal Connectors



[4AWG] AWK-40
[8AWG] AWK-80

Autosound RCA Cable

ARCA-3 – 3' RCA Interconnect Cables
Premium OFC (Oxygen Free Copper) Interconnects
Twisted Pair and Double Shielded

ARCA-12 – 12' RCA Interconnect Cables
Premium OFC (Oxygen Free Copper) Interconnects
Twisted Pair and Double Shielded

ARCA-17 – 17' RCA Interconnect Cables
Premium OFC (Oxygen Free Copper) Interconnects
Twisted Pair and Double Shielded





Autosound 2.4 & 1.2 Digital Capacitors

Provides The Instant Power Your Amplifier Needs For Maximum SPL And Tighter Bass

Red 4 Digit LED Voltage Meter
Supercharged Electrolyte Fluid
Polycarbonate Display Cover
Auto Turn On
Mounting Clamps
Platinum Power Connectors
20 VDC
Attractive Blister Card

[2.4 Farad] ASC-2.4
[1.2 Farad] ASC-1.2

Autosound Power and Ground Wire



AWS-4P – 100' 4 Gauge Power Wire
882 Strands
50% OFC/50% CCA Blended Wire
Flexible Blue Satin PVC Insulation Jacket

AWS-4G – 100' 4 Gauge Ground Wire
882 Strands
50% OFC/50% CCA Blended Wire
Flexible Brown Satin PVC Insulation Jacket

AWS-8P – 230' 8 Gauge Power Wire
336 Strands
50% OFC/50% CCA Blended Wire
Flexible Blue Satin PVC Insulation Jacket

AWS-8G – 230' 8 Gauge Ground Wire
336 Strands
50% OFC/50% CCA Blended Wire
Flexible Brown Satin PVC Insulation Jacket

Autosound Speaker Wire



AWS-12SP – 330' 12 Gauge Speaker Wire
135 Strands
50% OFC/50% CCA Blended Wire
Flexible Blue Satin PVC Insulation Jacket

AWS-16SP – 500' 16 Gauge Speaker Wire
60 Strands
50% OFC/50% CCA Blended Wire
Flexible Blue Satin PVC Insulation Jacket

POWERBASS AMPLIFIERS COMPARISON CHART

| Mono Block | | Channels | Output Power @ 1 Ohm | Output Power @ 2 Ohm | Output Power @ 4 Ohm | Strapped Output Power @ 2 Ohm |
|--------------|-------|----------|-------------------------|-------------------------|-------------------------|----------------------------------|
| XMA-3000D | pg 6 | 1 | 3000 | 2000 | 1200 | 6000 |
| XMA-2000D | pg 6 | 1 | 2000 | 1400 | 700 | 4000 |
| ASA3-1500.1D | pg 7 | 1 | 1500 | 1000 | 500 | 3000 |
| XMA-1205D | pg 6 | 1 | 1200 | 800 | 500 | 2400 |
| ASA3-1000.1D | pg 7 | 1 | 1000 | 700 | 400 | 2000 |
| ACS-1000D | pg 7 | 1 | 1000 | 600 | 400 | N/A |
| XL-605DM | pg 18 | 1 | 600 | 400 | 250 | N/A |
| ASA3-600.1D | pg 7 | 1 | 600 | 400 | 200 | 1200 |
| ASA3-600.1 | pg 7 | 1 | N/A | 600 | 300 | N/A |
| ACS-500D | pg 7 | 1 | 500 | 300 | 200 | N/A |
| ASA3-400.1 | pg 7 | 1 | N/A | 400 | 200 | N/A |
| XL-355DM | pg 18 | 1 | N/A | 350 | 200 | N/A |

| 2 Channel A | | | Output Power @ 4 Ohm Stereo | Output Power @ 2 Ohm Stereo | Output Power @ 4 Ohm Bridged | |
|-------------|-------|---|--------------------------------|--------------------------------|---------------------------------|-----|
| XMA-2405IR | pg 6 | 2 | 2x200 | 2x400 | 1x800 | N/A |
| ASA3-800.2 | pg 7 | 2 | 2x200 | 2x400 | 1x800 | N/A |
| ASA3-600.2 | pg 7 | 2 | 2x150 | 2x300 | 1x600 | N/A |
| XMA-2200IR | pg 6 | 2 | 2x100 | 2x200 | 1x400 | N/A |
| XL-2205M | pg 18 | 2 | 2x100 | 2x200 | 1x400 | N/A |
| ASA3-400.2 | pg 7 | 2 | 2x100 | 2x200 | 1x400 | N/A |
| ASA3-300.2 | pg 7 | 2 | 2x75 | 2x150 | 1x300 | N/A |
| ACS-2120 | pg 7 | 2 | 2x60 | 2x120 | 1x240 | N/A |
| ASA3-200.2 | pg 7 | 2 | 2x50 | 2x100 | 1x200 | N/A |

| 3 Channel A | | | | | | |
|-------------|-------|---|--------------|---------------|-----------------------|-----|
| XL-3515M | pg 18 | 3 | 2x80 + 1x250 | 2x160 + 1x350 | 1x320 + 1x350 (2-Ohm) | N/A |

| 4 Channel A | | | | | | |
|-------------|-------|---|-------|-------|-------|-----|
| XMA-4250IR | pg 6 | 4 | 4x125 | 4x250 | 2x500 | N/A |
| ASA3-600.4 | pg 7 | 4 | 4x100 | 4x200 | 2x400 | N/A |
| XL-4165M | pg 18 | 4 | 4x80 | 4x160 | 2x320 | N/A |
| ACS-4120 | pg 7 | 4 | 4x60 | 4x120 | 2x240 | N/A |
| ASA3-400.4 | pg 7 | 4 | 4x50 | 4x100 | 2x200 | N/A |
| ACS-4090 | pg 7 | 4 | 4x45 | 4x90 | 2x180 | N/A |

| 5 Channel A | | | | | | |
|-------------|-------|---|---------------|---------------|-----------------------|-----|
| XMA-5900IR | pg 6 | 5 | 4x100 + 1x500 | 4x200 + 1x800 | 2x400 + 1x800 (2-Ohm) | N/A |
| ASA3-1100.5 | pg 7 | 5 | 4x75 + 1x250 | 4x150 + 1x500 | 2x300 + 1x500 (2-Ohm) | N/A |
| ASA3-700.5 | pg 7 | 5 | 4x50 + 1x200 | 4x100 + 1x400 | 2x200 + 1x400 (2-Ohm) | N/A |
| XL-5675M | pg 18 | 5 | 4x80 + 1x250 | 4x160 + 1x350 | 2x320 + 1x350 (2-Ohm) | N/A |

| Frequency | Total Harmonic Distortion | S/N Ratio | Dimension (L x W x H) |
|------------|---------------------------|-----------|-----------------------|
| 10Hz-300Hz | <0.4% | >95dB | 21.0" x 7.1" x 2.0" |
| 10Hz-300Hz | <0.4% | >95dB | 18.3" x 7.1" x 2.0" |
| 20Hz-150Hz | <0.5% | >80dB | 16.6" x 9.4" x 2.3" |
| 10Hz-300Hz | <0.4% | >100dB | 14.7" x 7.1" x 2.0" |
| 20Hz-150Hz | <0.5% | >80dB | 15.5" x 9.4" x 2.3" |
| 10Hz-250Hz | <0.5% | >80dB | 12.0" x 7.1" x 2.0" |
| 10Hz-300Hz | <0.4% | >85dB | 8.4" x 4.5" x 1.6" |
| 20Hz-150Hz | <0.5% | >80dB | 13.6" x 9.4" x 2.3" |
| 20Hz-22kHz | <0.5% | >94dB | 16.8" x 8.3" x 2.3" |
| 10Hz-250Hz | <0.5% | >80dB | 9.7" x 7.1" x 2.0" |
| 20Hz-22kHz | <0.5% | >94dB | 13.7" x 8.3" x 2.3" |
| 10Hz-300Hz | <0.4% | >85dB | 7.5" x 4.5" x 1.6" |
| | | | |
| 10Hz-40kHz | <0.2% | >90dB | 9.2" x 7.1" x 2.0" |
| 20Hz-22kHz | <0.5% | >94dB | 18.4" x 8.3" x 2.3" |
| 20Hz-22kHz | <0.5% | >94dB | 15.7" x 8.3" x 2.3" |
| 10Hz-40kHz | <0.5% | >90dB | 7.6" x 7.1" x 2.0" |
| 10Hz-40kHz | <0.2% | >85dB | 7.5" x 4.5" x 1.6" |
| 20Hz-22kHz | <0.5% | >94dB | 12.0" x 8.3" x 2.3" |
| 20Hz-22kHz | <0.5% | >94dB | 9.8" x 8.3" x 2.3" |
| 10Hz-50kHz | <0.3% | >100dB | 8.5" x 7.1" x 2.0" |
| 20Hz-22kHz | <0.5% | >94dB | 9.0" x 8.3" x 2.3" |
| | | | |
| 10Hz-40kHz | <0.2% | >85dB | 9.6" x 4.5" x 1.6" |
| | | | |
| 10Hz-40kHz | <0.2% | >90dB | 11.2" x 7.1" x 2.0" |
| 20Hz-22kHz | <0.5% | >94dB | 16.8" x 8.3" x 2.3" |
| 10Hz-40kHz | <0.2% | >85dB | 9.6" x 4.5" x 1.6" |
| 10Hz-50kHz | <0.3% | >100dB | 14.8" x 7.1" x 2.0" |
| 20Hz-22kHz | <0.5% | >94dB | 12.0" x 8.3" x 2.3" |
| 10Hz-50kHz | <0.3% | >100dB | 12.8" x 7.1" x 2.0" |
| | | | |
| 10Hz-40kHz | <0.2% | >90dB | 14.7" x 7.1" x 2.0" |
| 20Hz-22kHz | <0.5% | >94dB | 20.3" x 8.3" x 2.3" |
| 20Hz-22kHz | <0.5% | >94dB | 16.8" x 8.3" x 2.3" |
| 10Hz-40kHz | <0.2% | >85dB | 10.8" x 4.5" x 1.6" |

POWERBASS SUBWOOFER COMPARISON CHART

| Subwoofers | | Size | Power Handling Watts RMS/Peak | Nominal Impedance | Voice Coil | Frequency Response | Sensitivity (1W/1M) | Mounting Depth |
|------------|-------|------------|----------------------------------|----------------------|---------------|-----------------------|------------------------|-------------------|
| 4XL-151D | pg 10 | 15" | 3500/7000 | Dual 1 ohm | 4" | 30Hz-500Hz | 88dB | 11.25" |
| 3XL-1520D | pg 11 | 15" | 1500/3000 | Dual 2 ohm | 3.5" | 25Hz-400Hz | 90dB | 11.0" |
| 3XL-1510D | pg 11 | 15" | 1500/3000 | Dual 1 ohm | 3.5" | 25Hz-400Hz | 91dB | 11.0" |
| L-1504D | pg 13 | 15" | 500/1000 | Dual 4 ohm | 2.5" | 27Hz-450Hz | 94dB | 6.5" |
| M-1504D | pg 14 | 15" | 425/850 | Dual 4 ohm | 2.5" | 22Hz-400Hz | 94dB | 6.5" |
| M-1504 | pg 14 | 15" | 425/850 | Single 4 ohm | 2.5" | 22Hz-400Hz | 94dB | 6.5" |
| | | | | | | | | |
| 3XL-1220D | pg 10 | 12" | 1000/2000 | Dual 2 ohm | 3" | 25Hz-450Hz | 88dB | 9.0" |
| 3XL-1210D | pg 10 | 12" | 1000/2000 | Dual 1 ohm | 3" | 25Hz-450Hz | 89dB | 9.0" |
| 2XL-1240D | pg 12 | 12" | 450/900 | Dual 4 ohm | 2.5" | 30Hz-400Hz | 91dB | 5.25" |
| XL-1240TD | pg 12 | 12" | 400/800 | Dual 4 ohm | 2" | 33Hz-450Hz | 91dB | 3.8" |
| XL-1240T | pg 12 | 12" | 400/800 | Single 4 ohm | 2" | 33Hz-450Hz | 91dB | 3.8" |
| XL-1240D | pg 12 | 12" | 400/800 | Dual 4 ohm | 2" | 33Hz-450Hz | 91dB | 5.75" |
| XL-1240 | pg 12 | 12" | 400/800 | Single 4 ohm | 2" | 33Hz-450Hz | 93dB | 5.75" |
| L-1204D | pg 13 | 12" | 400/800 | Dual 4 ohm | 2" | 30Hz-450Hz | 93dB | 5.4" |
| M-1204D | pg 14 | 12" | 375/750 | Dual 4 ohm | 2" | 29Hz-450Hz | 92dB | 5.5" |
| M-1204 | pg 14 | 12" | 375/750 | Single 4 ohm | 2" | 29Hz-450Hz | 92dB | 5.5" |
| S-1204D | pg 14 | 12" | 300/600 | Dual 4 ohm | 2" | 29Hz-450Hz | 91dB | 5.5" |
| S-1204 | pg 14 | 12" | 300/600 | Single 4 ohm | 2" | 29Hz-450Hz | 91dB | 5.5" |
| S-12TD | pg 15 | 12" Thin | 300/600 | Dual 4 ohm | 2" | 29Hz-350Hz | 91dB | 3.25" |
| S-12T | pg 15 | 12" Thin | 300/600 | Single 4 ohm | 2" | 31Hz-350Hz | 91dB | 3.25" |
| XL-1240MF | pg 20 | 12" Marine | 250/500 | Single 4 ohm | 2" | 36Hz-500Hz | 89dB | 4.6" |
| PS-12 | pg 15 | 12" | 250/500 | Single 4 ohm | 2" | 32Hz-450Hz | 91dB | 5.4" |
| | | | | | | | | |
| 2XL-1040D | pg 12 | 10" | 400/800 | Dual ohm | 2.5" | 35Hz-500Hz | 91dB | 5.25" |
| XL-1040TD | pg 13 | 10" | 350/700 | Single 4 ohm | 2" | 35Hz-500Hz | 90dB | 3.4" |
| XL-1040T | pg 13 | 10" | 350/700 | Single 4 ohm | 2" | 35Hz-500Hz | 90dB | 3.4" |
| XL-1040D | pg 12 | 10" | 350/700 | Dual 4 ohm | 2" | 35Hz-500Hz | 90dB | 5.25" |
| XL-1040 | pg 12 | 10" | 350/700 | Single 4 ohm | 2" | 35Hz-500Hz | 90dB | 5.25" |
| L-1004D | pg 13 | 10" | 350/700 | Dual 4 ohm | 2" | 33Hz-500Hz | 91dB | 5.1" |
| M-1004D | pg 14 | 10" | 325/650 | Dual 4 ohm | 2" | 35Hz-500Hz | 91dB | 5.125" |
| M-1004 | pg 14 | 10" | 325/650 | Single 4 ohm | 2" | 35Hz-500Hz | 91dB | 5.125" |
| S-1004D | pg 14 | 10" | 275/550 | Dual 4 ohm | 2" | 33Hz-500Hz | 90dB | 5.25" |
| S-1004 | pg 14 | 10" | 275/550 | Single 4 ohm | 2" | 33Hz-500Hz | 90dB | 5.25" |
| S-10TD | pg 15 | 10" Thin | 275/550 | Dual 4 ohm | 2" | 33Hz-400Hz | 90dB | 3.25" |
| S-10T | pg 15 | 10" Thin | 275/550 | Single 4 ohm | 2" | 34Hz-400Hz | 90dB | 3.25" |
| XL-1040MF | pg 20 | 10" Marine | 200/400 | Single 4 ohm | 2" | 45Hz-500Hz | 88dB | 4.6" |
| PS-10 | pg15 | 10" | 200/400 | Single 4 ohm | 2" | 35Hz-450Hz | 90dB | 5.1" |
| | | | | | | | | |
| XL-840D | pg 12 | 8" | 200/400 | Dual 4 ohm | 2" | 40Hz-500Hz | 91dB | 4.4" |
| XL-840 | pg 12 | 8" | 200/400 | Single 4 ohm | 2" | 40Hz-500Hz | 91dB | 4.4" |
| S-84D | pg 14 | 8" | 125/250 | Dual 4 ohm | 1.5" | 42Hz-800Hz | 86dB | 3.5" |
| S-84 | pg 14 | 8" | 125/250 | Single 4 ohm | 1.5" | 41Hz-800Hz | 86dB | 3.5" |

POWERBASS LOADED SUBWOOFER ENCLOSURE COMPARISON CHART

| Amplified Boxes | | Type | Power Handling Watts RMS/Peak | Nominal Impedance | Frequency Response | Dimensions height/width/top depth/bottom depth |
|-----------------|-------|---------------------------|----------------------------------|----------------------|-----------------------|---|
| PS-AWB121 | pg 37 | Single 12" Amplified | 200/400 | 4 ohm | 30Hz-250Hz | 13.5" x 18.75" x 12.25" x 14.4" |
| PS-AWB101 | pg 37 | Single 10" Amplified | 175/350 | 4 ohm | 33Hz-250Hz | 12.25" x 17" x 11.4" x 13.75" |
| PS-AWB121T | pg 37 | Single 12" Amplified Thin | 200/400 | 4 ohm | 36Hz-250Hz | 14" x 30.3" x 3.75" x 5.7" |
| PS-AWB101T | pg 37 | Single 10" Amplified Thin | 175/300 | 4 ohm | 38Hz-280Hz | 13" x 21.5" x 3.5" x 7.0" |
| PS-ADF110T | pg 37 | Single 10" Amplified Thin | 275/550 | 4 ohm | 38Hz-280Hz | 12.4" x 17.9" x 5.65" |
| BTA-8 | pg 39 | Single 8" Amplified | 150/300 | 4 ohm | 35Hz-250Hz | 10" x 10" x 14.5" x 21.5" |
| STA-8 | pg 39 | Single 8" Amplified | 150/300 | 2 ohm | 35Hz-250Hz | 2.75" x 13.5" x 9.75" |

Loaded Boxes

| | | | | | | |
|-----------|-------|-----------------|----------|--------------------|------------|---------------------------------|
| PS-WB122 | pg 36 | Dual 12" | 550/1100 | Single 4-ohm input | 30Hz-120Hz | 13.5" x 34" x 12.25" x 14.4" |
| PS-WB102 | pg 36 | Dual 10" | 500/1000 | Single 4-ohm input | 33Hz-150Hz | 12.25" x 32" x 11.4" x 13.75" |
| PS-WB121 | pg 36 | Single 12" | 275/550 | Single 4-ohm input | 30Hz-120Hz | 13.5" x 18.75" x 12.25" x 14.4" |
| PS-WB101 | pg 36 | Single 10" | 250/500 | Single 4-ohm input | 33Hz-150Hz | 12.25" x 17" x 11.4" x 13.75" |
| PS-WB121T | pg 38 | Single 12" Thin | 300/600 | Single 4-ohm input | 36Hz-250Hz | 14" x 30.3" x 3.75" x 5.7" |
| PS-WB101T | pg 38 | Single 10" Thin | 275/550 | Single 4-ohm input | 38Hz-250Hz | 13" x 21.5" x 3.5" x 7.0" |
| PS-DF110T | pg 26 | Single 10" Thin | 275/550 | Single 4-ohm input | 38Hz-280Hz | 21.4" x 17.75" x 5.65" x 5.65" |

POWERBASS SOUNDBAR AND POD COMPARISON CHART

| Power Sports Soundbars | | Size | Power Handling Watts RMS/Peak | Nominal Impedance | Frequency Response | Dimensions height / width / depth |
|------------------------|-------|---|----------------------------------|----------------------|-----------------------|--------------------------------------|
| XL-1200 | pg 20 | 3.5" Square Woofers x 6 3" Full Range x 2 / 1" Tweeter x 4 | 500/1000 | 2-OHM | 50Hz-22kHz | 4.7" x 33.75" x 4.4" |
| XL-1000 | pg 20 | 3" Full Range x 8 / 1.25" Tweeter x 2 | 400/800 | 4-OHM | 50Hz-22kHz | 4.25" x 33.75" x 4.2" |
| XL-800 | pg 20 | 3" Full Range x 6 / 1.25" Tweeter x 2 | 300/600 | 4-OHM | 50Hz-22kHz | 4.25" x 27" x 4.2" |

| Long Range Speaker Pods | | Size | Power Handling Watts RMS/Peak | Nominal Impedance | Voice Coil | Frequency Response | Sensitivity (1W/1M) |
|-------------------------|-------|------|----------------------------------|----------------------|---------------|-----------------------|------------------------|
| XL-POD10LR | pg 20 | 10" | 150/300 | 4 ohm | 2" | 40Hz-22KHz | 101dB |
| XL-POD8LR | pg 20 | 8" | 125/250 | 4 ohm | 1.5" | 45Hz-22KHz | 101dB |
| XL-POD6LR | pg 20 | 6.5" | 75/150 | 4 ohm | 1" | 50Hz-22KHz | 101dB |

Short Range Speaker Pods

| | | | | | | | |
|-----------|-------|-------|---------|-------|------|------------|------|
| XL-POD8SR | pg 18 | 8" | 100/200 | 4 ohm | 1.5" | 45Hz-20KHz | 91dB |
| XL-POD6SR | pg 18 | 6.5" | 60/120 | 4 ohm | 1" | 60Hz-20KHz | 90dB |
| XL-POD5SR | pg 18 | 5.25" | 50/100 | 4 ohm | 1" | 70Hz-20KHz | 89dB |

POWERBASS SPEAKERS COMPARISON CHART

| Full Range | | Size | Watts RMS | Watts Peak | Nominal Impedance | Frequency Response | Sensitivity (1W/1M) | Mounting Depth |
|------------|-------|-------------|--------------|---------------|----------------------|-----------------------|------------------------|-------------------|
| XL-82SS | pg 19 | 8" | 125 | 250 | 3-OHM | 40Hz-20kHz | 90 dB | 3.5" |
| XL-82M | pg 21 | 8" | 125 | 250 | 4-OHM | 45Hz-20kHz | 92 dB | 3.5" |
| 3XL-693 | pg 24 | 6X9" | 130 | 260 | 3-OHM | 40Hz-22kHz | 89 dB | 3.43" |
| 2XL-693 | pg 24 | 6X9" | 100 | 200 | 3-OHM | 40Hz-20kHz | 92 dB | 3.3" |
| L2-693 | pg 25 | 6X9" | 100 | 300 | 2-OHM | 43Hz-20kHz | 91 dB | 3.2" |
| L2-692T | pg 25 | 6X9" Thin | 60 | 180 | 2-OHM | 50Hz-20kHz | 89 dB | 2.48" |
| XL-692SS | pg 19 | 6x9" | 80 | 160 | 3-OHM | 45Hz-20kHz | 89 dB | 3.3" |
| S-6903 | pg 25 | 6X9" | 70 | 210 | 4-OHM | 45Hz-20kHz | 90 dB | 3.3" |
| S-6902T | pg 25 | 6X9" Thin | 50 | 150 | 4-OHM | 55Hz-20kHz | 89 dB | 2.5" |
| OE692-TY | pg 34 | 6x9" Custom | 80 | 160 | 4-OHM | 65Hz-20kHz | 89 dB | 1.85" |
| XL-69M | pg 21 | 6X9" Marine | 120 | 240 | 4-OHM | 56Hz-20kHz | 93 dB | 3.5" |
| 2XL-683 | pg 24 | 6X8" | 75 | 150 | 3-OHM | 53Hz-21kHz | 91 dB | 2.6" |
| L2-682 | pg 25 | 6X8" | 70 | 210 | 2-OHM | 54Hz-21kHz | 89 dB | 2.4" |
| S-6802 | pg 25 | 6X8" | 60 | 180 | 4-OHM | 56Hz-20kHz | 88 dB | 2.3" |
| 2XL-673 | pg 24 | 6.75" | 75 | 150 | 3-OHM | 60Hz-21kHz | 89 dB | 2.15" |
| L2-675 | pg 25 | 6.75" | 60 | 180 | 2-OHM | 62Hz-21kHz | 88 dB | 1.87" |
| S-6752 | pg 25 | 6.75" | 50 | 150 | 4-OHM | 63Hz-20kHz | 88 dB | 1.8" |
| 3XL-653 | pg 24 | 6.5" | 90 | 180 | 3-OHM | 55Hz-22kHz | 86 dB | 2.56" |
| 2XL-653 | pg 24 | 6.5" | 75 | 150 | 3-OHM | 58Hz-20kHz | 90 dB | 2.5" |
| L2-652 | pg 25 | 6.5" | 60 | 180 | 2-OHM | 59Hz-21kHz | 88 dB | 2.13" |
| S-6502 | pg 25 | 6.5" | 50 | 150 | 4-OHM | 60Hz-20kHz | 88 dB | 2.3" |
| 2XL-653T | pg 24 | 6.5" Thin | 60 | 120 | 3-OHM | 60Hz-20kHz | 89 dB | 2.13" |
| XL-62SS | pg 19 | 6.5" | 60 | 120 | 3-OHM | 65Hz-20kHz | 88 dB | 2.25" |
| S-650T | pg 25 | 6.5" Thin | 45 | 135 | 4-OHM | 63Hz-20kHz | 88 dB | 2.0" |
| OE652-TY | pg 34 | 6.5" Custom | 60 | 120 | 4-OHM | 70Hz-20kHz | 88 dB | 1.6" |
| XL-62M | pg 21 | 6.5" Marine | 80 | 160 | 4-OHM | 60Hz-20kHz | 92 dB | 2.7" |
| 2XL-523 | pg 24 | 5.25" | 60 | 120 | 3-OHM | 62Hz-20kHz | 89 dB | 2.2" |
| XL-52SS | pg 19 | 5.25" | 50 | 100 | 3-OHM | 70Hz-20kHz | 87 dB | 2.0" |
| L2-522 | pg 25 | 5.25" | 50 | 150 | 2-OHM | 64Hz-21kHz | 88 dB | 1.95" |
| S-5202 | pg 25 | 5.25" | 40 | 120 | 4-OHM | 65Hz-20kHz | 87 dB | 2.0" |
| XL-522M | pg 19 | 5.25" | 60 | 120 | 4-OHM | 70Hz-20kHz | 91 dB | 2.33" |
| 2XL-463 | pg 24 | 4X6" | 50 | 100 | 3-OHM | 68Hz-20kHz | 88 dB | 2.3" |
| L2-462 | pg 25 | 4X6" | 40 | 120 | 2-OHM | 70Hz-21kHz | 87 dB | 1.86" |
| S-4602 | pg 25 | 4X6" | 35 | 105 | 4-OHM | 70Hz-20kHz | 88 dB | 1.94" |
| S-4102 | pg 25 | 4X10" | 50 | 150 | 4-OHM | 60Hz-20kHz | 89 dB | 2.31" |
| 2XL-403 | pg 24 | 4" | 50 | 100 | 3-OHM | 68Hz-20kHz | 88 dB | 2.2" |
| XL-42SS | pg 19 | 4" | 40 | 80 | 3-OHM | 100Hz-20kHz | 87 dB | 2.0" |
| S-4002 | pg 25 | 4" | 35 | 105 | 4-OHM | 70Hz-20kHz | 86 dB | 1.8" |
| S-3502 | pg 25 | 3.5" | 30 | 90 | 4-OHM | 80Hz-20kHz | 85 dB | 1.63" |
| S-275CF | pg 25 | 2.75" | 30 | 60 | 4-OHM | 150Hz-19kHz | 90 dB | 1.25" |

For additional specifications and box enclosure recommendations please visit our website.

| Components | | | Size | Watts RMS | Watts Peak | Nominal Impedance | Frequency Response | Sensitivity (1W/1M) | Mounting Depth |
|------------|-------|--|-------------|--------------|---------------|----------------------|-----------------------|------------------------|-------------------|
| OE69C-TY | pg 35 | | 6x9" Custom | 80 | 160 | 4-OHM | 65Hz-20kHz | 89 dB | 1.85" |
| 4XL-65C | pg 31 | | 6.5" Thin | 100 | 200 | 4-OHM | 100Hz-20kHz | 93 dB | 2.25" |
| 3XL-63C | pg 26 | | 6.5" | 90 | 180 | 3-OHM | 52Hz-22kHz | 86 dB | 2.56" |
| 2XL-63C | pg 27 | | 6.5" | 90 | 180 | 3-OHM | 59Hz-20kHz | 91 dB | 2.4" |
| 2XL-60.3C | pg 26 | | 6.5" | 120 | 240 | 3-OHM | 59Hz-20kHz | 92 dB | 2.4" |
| L2-6C | pg 27 | | 6.5" | 75 | 225 | 2-OHM | 58Hz-21kHz | 90 dB | 2.13" |
| S-60C | pg 28 | | 6.5" | 70 | 210 | 4-OHM | 60Hz-20kHz | 90 dB | 2.3" |
| XL-60M | pg 19 | | 6.5" Marine | 100 | 200 | 4-OHM | 67Hz-21kHz | 93 dB | 2.75" |
| OE65C-TY | pg 35 | | 6.5" Custom | 60 | 120 | 4-OHM | 70Hz-20kHz | 88 dB | 1.6" |
| | | | | | | | | | |
| S-50C | pg 28 | | 5.25" | 50 | 150 | 4-OHM | 65Hz-20kHz | 89 dB | 2.0" |

| Tweeters | | Material | | | | | | | |
|----------|-------|---------------|-------|-----|-----|---------|------------|--------|-------|
| XPRO-4H | pg 30 | Cast Aluminum | 4" | 150 | 300 | 4-OHM | 3k-20kHz | 106 dB | 3.11" |
| 4XL-2H | pg 30 | Cast Aluminum | 2" | 100 | 200 | 4-OHM | 3k-20kHz | 103 dB | 1.15" |
| L-3H | pg 31 | Cast Aluminum | 3" | 100 | 200 | 4-OHM | 3k-20kHz | 105 dB | 2.35" |
| | | | | | | | | | |
| 3XL-2S | pg 28 | Pure Silk | 1.25" | 60 | 120 | 4-OHM | 3k-20kHz | 92 dB | 1" |
| | | | | | | | | | |
| 2XL-1T | pg 28 | Titanium | 1" | 50 | 100 | 4-OHM | 4.2k-25kHz | 91 dB | .75" |
| L-1A | pg 29 | Aluminum | 1" | 50 | 100 | 4-OHM | 3.5k-21kHz | 92 dB | .75" |
| S-1S | pg 29 | Pure Silk | 1" | 50 | 100 | 4-OHM | 3k-20kHz | 91 dB | .75" |
| S-1ZT | pg 29 | Zirconium | 1" | 100 | 200 | 4-8-OHM | 5k-25kHz | 102 dB | N/A |

| Mid Range | | | | | | | | | |
|-----------|-------|---------------------|------|-----|-----|-------|-------------|-------|-------|
| XPRO-8CX | pg 30 | Paper Cone | 8" | 225 | 450 | 4-OHM | 100Hz-5kHz | 95 dB | 3.25" |
| XPRO-8 | pg 30 | Paper Cone | 8" | 200 | 400 | 4-OHM | 65Hz-6kHz | 94 dB | 3.1" |
| 4XL-80T | pg 31 | Paper Cone | 8" | 150 | 300 | 4-OHM | 90Hz-10kHz | 93 dB | 2.5" |
| | | | | | | | | | |
| L2-700 | pg 25 | Injection molded PP | 7" | 90 | 270 | 2-OHM | 55Hz-5.5kHz | 90 dB | 2.36" |
| | | | | | | | | | |
| XPRO-65CX | pg 30 | Paper Cone | 6.5" | 150 | 300 | 4-OHM | 120Hz-10kHz | 93dB | 2.75" |
| XPRO-65 | pg 30 | Paper Cone | 6.5" | 125 | 250 | 4-OHM | 78Hz-8kHz | 92 dB | 2.7" |
| 4XL-65T | pg 31 | Paper Cone | 6.5" | 100 | 200 | 4-OHM | 100Hz-10kHz | 91 dB | 2.25" |
| | | | | | | | | | |
| 2XL-3M | pg 24 | Pure Silk | 3" | 50 | 100 | 4-OHM | 600Hz-10kHz | 89 dB | 1.16" |

pb



powerbass::



CAT-PB2017 \$2.95
0117



PowerBass Amplifiers and Speakers are manufactured under an ISO9001:2000 quality System

IOR International Rectifier

IR® is a registered trademark of International Rectifier Corporation.

Santoprene® is a registered trademark of ExxonMobil Chemical Co.

Ferrofluid® is a registered trademark of Ferro-Tec International

Kevlar® and Kapton® are registered trademarks of E.I. du Pont de Nemours and Company

www.powerbassusa.com

PowerBass® USA, Inc.

2133 South Green Privado • Ontario, CA 91761
tel (909) 923-3868 • fax (909) 923-8048

Due to continuing product improvement, features and specifications are subject to change without notice.

©2017 PowerBass USA, Inc. All Rights Reserved.

